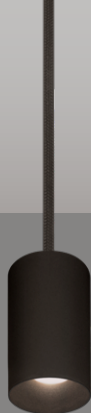


AERA 2" CYLINDER


PENDANT, PENDANT ASYMMETRIC
DIRECT/INDIRECT, DIRECT




Declare.



4" Height
Bevel




8" Height
Decorative Bevel



12" Height
Pinhole

True-to-size with a versatile minimalist esthetic, Aera Cylinder luminaires are high-performance fixtures, delivering visually comfortable lighting suitable for a wide range of applications.

Beam Angles



10° 15° 25° 35° 50° 80° 90° 80°-Up
Low UGR < 10 in 10°, 15°, 25°, 35°, and 50° beams


Performance

LUMEN OUTPUT ¹	WATTS	EFFICACY
552 lm	7 W	79 lm/W
727 lm	10 W	73 lm/W

¹ Lumen packages are assuming 3500K, 80+ CRI, 35° beam, bevel baffle, SDL lens option.

Light Source

Static White
Full Spectrum Static White
SOLA - Dim-to-Warm
DUO - Tunable White




COB


2 Step Color Binning
Up to 95+ CRI

Drivers / Protocols

1%, 0.1% Dimming Available
0-10V, TRIAC, ELV, Lutron EcoSystem, DALI, DMX
Emergency Battery (optional)

 Smart / Wireless Compatible

Mounting Options



Flat	Conduit	Direct	Deep
Power Cord Stem Swivel Stem	Power Cord Stem Swivel Stem	Power Cord Stem	Power Cord Stem

Aera Family (Refer to other spec sheets)

Downlight



2" / 3" / 4"
Round / Square
Recessed Adjustable



2" / 3" / 4"
Round / Square
Recessed



2" / 3" / 4"
Round / Square
Recessed Wall Wash

Multi-aperture



2" / 3" / 4"
Round / Square
Recessed Adjustable



2" / 3" / 4"
Round / Square
Recessed



2" / 3" / 4"
Round / Square
Recessed Wall Wash

Cylinder



2" / 3" / 4" / 5" / 6"
4" Seal
Pendant
Pendant Asymmetric
Pendant Wall Wash



2" / 3" / 4" / 5" / 6"
4" Seal
Wall
Wall Asymmetric



2" / 3" / 4" / 5" / 6"
4" Seal
Surface
Surface Asymmetric
Surface Wall Wash

AERA 2" CYLINDER

PENDANT, PENDANT ASYMMETRIC
DIRECT/INDIRECT, DIRECT



Project: _____

Type: _____



For a Title 24 JA8 compliant fixture, see page 3.

Order Guide

LUMINAIRE ID ¹	DISTRIBUTION	CYLINDER HEIGHT	CYLINDER FINISH	BAFFLE STYLE	BAFFLE FINISH		
AE2CYP - Aera 2" Cylinder Pendant AE2CYPASY - Aera 2" Cylinder Pendant Asymmetric ¹ Pendant Wall Wash also available. Consult other spec sheet.	DI - Direct/Indirect D - Direct	DIRECT/INDIRECT ² 6IN ³ - 6" 8IN - 8" 12IN - 12" CH#IN ⁵ - Custom height	DIRECT 4IN ⁴ - 4" 8IN - 8" 12IN - 12"	FTMW - Matte white FTMB - Matte black FCHP - Champagne FDBZ - Dark bronze CF# - Custom finish, specify RAL#	BVL - Bevel PHL - Pinhole BVLD - Decorative bevel	FTMW - Matte white FTMB - Matte black FSPC - Satin silver FSSPC - Matte silver FCHP - Champagne FDBZ - Dark bronze CF# - Custom finish, specify RAL#	
		² Only available with DR canopy option when specified with integral drivers. ³ Not available with Asymmetric. ⁴ Not available with DMNC/DMRM canopy options when specified with integral drivers. ⁵ Specify height (#) in 1" increments only. Up to maximum 36". For minimum heights, see page 4.					
LENS * See page 4 for details	LIGHT SOURCE	DIRECT BEAM	COLOR QUALITY	CRI	COLOR TEMPERATURE	ACCESSORIES * See page 4 for details	VOLTAGE
At baffle (choose 1 option) Specify NOL for Pinhole SDL - Soft diffused lens, Solite FDL - Frosted diffused lens CL - Clear lens NOL - No lens	SW - Static white FS - Full spectrum static white SOLA - Dim-to-warm single channel control DUO - Tunable white 2-channel control	10DEG ⁶ - 10° Very narrow spot 15DEG ⁶ - 15° Narrow spot 25DEG - 25° Spot 35DEG - 35° Narrow flood 50DEG - 50° Wide flood 80DEG ⁷ - 80° Very wide flood 90DEG ⁷ - 90° Open flood ⁶ Not available with full spectrum. ⁷ Not available with Asymmetric.	2STP ⁸ - 2 Step MacAdam Ellipse 3STP - 3 Step MacAdam Ellipse ⁸ Not available with full spectrum.	80CRI ⁹ - 80+ CRI 90CRI ⁹ - 90+ CRI 95CRI - 95+ CRI ⁹ Not available with full spectrum.	22K ¹⁰ - 2200K 24K ¹¹ - 2400K 27K - 2700K 30K - 3000K 35K - 3500K 40K - 4000K 50K ¹¹ - 5000K ¹⁰ Only available with 90+ CRI. ¹¹ Not available with 95+ CRI.	At light element ^{12,13} (choose up to 2 options for SW/FS and 1 option for SOLA/DUO) LSDL - Soft diffused lens, Solite LFDL - Frosted diffused lens LS - Linear spread HEX ¹⁴ - Hex louver NA - None ¹² Separate codes with a "+" if more than one is specified, e.g. LSDL+LS. ¹³ LSDL and LFDL cannot be combined. LS and HEX cannot be combined. ¹⁴ Not available with 80°/90° beam options.	120V - 120V 277V - 277V UNV - 120V-277V 347V ¹⁵ - 347V ¹⁵ Available with RD1 driver only. Please consult factory.
		25DEG - 25° Spot 35DEG - 35° Narrow flood 60DEG - 60° Wide flood 80DEG ⁷ - 80° Very wide flood 90DEG ⁷ - 90° Open flood		3STP - 3 Step MacAdam Ellipse	90CRI - 90+ CRI	SOLA 30K18K - 3000K to 1800K 27K18K - 2700K to 1800K DUO 65K27K - 6500K to 2700K 50K27K - 5000K to 2700K	
* LSDL or LFDL at light element cannot be combined with SDL, FDL, or CL at baffle.							
DIRECT WATTAGE ¹⁶	INDIRECT WATTAGE ¹⁸ Specify NA for Direct or SOLA	DIMMING ¹⁹	ELECTRICAL				
PENDANT 7W - 7 W output, up to 560 lm 10W ¹⁷ - 10 W output, up to 736 lm ¹⁶ Lumen outputs are reduced with full spectrum, consult factory. ¹⁷ Not available for a Direct/Indirect fixture.	PENDANT ASY. 7W - 7 W output, up to 511 lm 10W ¹⁷ - 10 W output, up to 689 lm ¹⁸ Lumen outputs are reduced with full spectrum, consult factory.	INTEGRAL DI - 1% 0-10V ELV ²⁰ - ELV 120V TRI ²⁰ - TRIAC 120V ¹⁹ PoE (Power-over-Ethernet) compatible. Consult factory for details. ²⁰ Available with 120V only.	REMOTE ²¹ RD1 - 1% 0-10V RELV ²² - ELV 120V RTRI ²² - TRIAC 120V RLDE1 ²³ - Lutron Hi-Lume 1% Eco ²¹ A remote driver box is provided. ²² Available with 120V only. ²³ On-site commissioning is required. ²⁴ To specify, add +EB to the selected dimming option, e.g. RD1+EB.	RDA ²³ - DALI RELD1 - eldoLED 1% ECOdrive 0-10V RELD0 - eldoLED 0.1% SOLOdrive 0-10V +EB ²⁴ - Emergency battery	1C - 1 circuit 2C ²⁵ - 2 circuits ²⁵ Available with Direct/Indirect only.		
SOLA 10W ¹⁷ - 10 W output, up to 525 lm DUO 8W - 8 W output, up to 500 lm	SOLA 10W ¹⁷ - 10 W output, up to 480 lm DUO 8W - 8 W output, up to 455 lm	SOLA NA - Not applicable DUO 8W - 8 W output, up to 500 lm	SOLA SDI - Single 0-10V input SELV ²⁰ - ELV 120V STRI ²⁰ - TRIAC 120V	SOLA RSDI - Single 0-10V input RSELV ²² - ELV 120V RSTRI ²² - TRIAC 120V	DUO RDMX ²³ - DMX RDDA ²³ - DALI DT6 RDDA8 ²³ - DALI DT8 RDD1 - Dual 0-10V input for CCT/intensity RLD2 ²³ - Lutron DALI-2 digital +EB ²⁴ - Emergency battery		
CANOPY TYPE ²⁶	CANOPY FINISH	SUSPENSION	OPTION ³⁷				
FLR ^{27,28} - Flat round canopy, 4" octagonal junction box CDR ^{27,28} - Conduit feed, round canopy DMNC ^{27,29} - Direct mount, new construction DMRM ^{27,29,30} - Direct mount, remodel DR ³¹ - Deep round canopy ²⁶ See page 6 for details. ²⁷ Direct/Indirect requires a remote driver. ²⁸ For 4" long cylinders, driver has to be in j-box when specified with integral drivers. See page 6 for details. ²⁹ 4" long cylinders require a remote driver. ³⁰ Single wiring entry only. No daisy chain connections allowed. ³¹ Can accommodate up to 2 drivers.	FTMW - Matte white FTMB - Matte black FCHP - Champagne FDBZ - Dark bronze CF# - Custom finish, specify RAL#	POWER CORD ^{32,33} BPC##IN - Black PVC WPC##IN - White PVC ³² Min 18" - max 72", specify length (##) in inches. ³³ Not available with Asymmetric.	STEM ³⁴ BKS##IN - Matte black stem WHS##IN - Matte white stem BKSS##IN ³⁵ - Matte black swivel stem WHSS##IN ³⁵ - Matte white swivel stem CF#S##IN ³⁶ - Custom finish stem CF#SS##IN ^{35,36} - Custom finish swivel stem ³⁴ Min 10" - max 72", specify length (##) in inches. ³⁵ Not available with DMNC/DMRM/DR canopy options, or for 4" long cylinders when specified with FLR/CDR and integral driver. ³⁶ Specify RAL#.	NA - None ³⁷ To specify a JA8 compliant fixture, see page 3.			



AERA 2" CYLINDER

PENDANT, PENDANT ASYMMETRIC
 DIRECT/INDIRECT, DIRECT
 Title 24 JA8



Project: _____

 Type: _____



Order Guide

LUMINAIRE ID ¹	DISTRIBUTION	CYLINDER HEIGHT	CYLINDER FINISH	BAFFLE STYLE	BAFFLE FINISH
	D				
AE2CYP - Aera 2" Cylinder Pendant AE2CYPASY - Aera 2" Cylinder Pendant Asymmetric ¹ Pendant Wall Wash also available. Consult other spec sheet.	D - Direct	4IN ² - 4" 8IN - 8" 12IN - 12" CH#IN ³ - Custom height ² Not available with DMNC/DMRM canopy options when specified with integral drivers. ³ Specify height (#) in 1" increments only. Up to maximum 36". For minimum heights, see page 4.	FTMW - Matte white FTMB - Matte black FCHP - Champagne FDBZ - Dark bronze CF# - Custom finish, specify RAL#	BVL - Bevel PHL - Pinhole BVLD - Decorative bevel	FTMW - Matte white FTMB - Matte black FSPC - Satin silver FSSPC - Matte silver FCHP - Champagne FDBZ - Dark bronze CF# - Custom finish, specify RAL#

LENS * See page 4 for details	LIGHT SOURCE	DIRECT BEAM	COLOR QUALITY	CRI	COLOR TEMP.	ACCESSORY * See page 4 for details	VOLTAGE
				90CRI			
At baffle Specify NOL for Pinhole SDL - Soft diffused lens, Solite FDL - Frosted diffused lens CL - Clear lens NOL - No lens	SW - Static white SOLA - Dim-to-warm single channel control	15DEG - 15° Narrow spot 25DEG - 25° Spot 35DEG - 35° Narrow flood 50DEG - 50° Wide flood 80DEG ⁴ - 80° Very wide flood 90DEG ⁴ - 90° Open flood ⁴ Not available with Asymmetric.	2STP - 2 Step MacAdam Ellipse 3STP - 3 Step MacAdam Ellipse 3STP - 3 Step MacAdam Ellipse	90CRI - 90+ CRI	27K - 2700K 30K - 3000K 35K - 3500K 40K - 4000K SOLA ⁵ - Dim-to-warm single channel control ⁵ 3500K to 2200K	At light element LSDL - Soft diffused lens, Solite LFDL - Frosted diffused lens NA - None	120V - 120V 277V - 277V

* LSDL or LFDL at light element cannot be combined with SDL, FDL, or CL at baffle. For SOLA, one of the following lenses must be specified: SDL, FDL, LSDL, or LFDL.

DIRECT WATTAGE		INDIRECT WATTAGE	DIMMING	ELECTRICAL	
		NA		1C	
PENDANT 7W - 7 W output, up to 560 lm 8W - 8 W output, up to 250 lm	PENDANT ASY. 7W - 7 W output, up to 511 lm 8W - 8 W output, up to 200 lm	NA - Not applicable	INTEGRAL D1 - 1% 0-10V ELV ⁶ - ELV 120V TRI ⁶ - TRIAC 120V ⁶ Available with 120V only. SD1 - Single 0-10V input SELV ⁶ - ELV 120V STRI ⁶ - TRIAC 120V	REMOTE ⁷ RD1 - 1% 0-10V RELV ⁸ - ELV 120V RTRI ⁸ - TRIAC 120V RLDE1 ⁹ - Lutron Hi-Lume 1% Eco ⁷ A remote driver box is provided. ⁸ Available with 120V only. ⁹ On-site commissioning is required. RSD1 - Single 0-10V input RSELV ⁸ - ELV 120V RSTRI ⁸ - TRIAC 120V	1C - 1 circuit

CANOPY TYPE ¹⁰	CANOPY FINISH	SUSPENSION	OPTION	
			JA8	
FLR ¹¹ - Flat round canopy, 4" octagonal junction box CDR ¹¹ - Conduit feed, round canopy DMNC ¹² - Direct mount, new construction DMRM ^{12,13} - Direct mount, remodel DR ¹⁴ - Deep round canopy ¹⁰ See page 6 for details. ¹¹ For 4" long cylinders, driver has to be in j-box when specified with integral drivers. See page 6 for details. ¹² 4" long cylinders require a remote driver. ¹³ Single wiring entry only. No daisy chain connections allowed. ¹⁴ Can accommodate up to 2 drivers.	FTMW - Matte white FTMB - Matte black FCHP - Champagne FDBZ - Dark bronze CF# - Custom finish, specify RAL#	POWER CORD ^{15,16} BPC##IN - Black PVC WPC##IN - White PVC ¹⁵ Min 18" - max 72", specify length (##) in inches. ¹⁶ Not available with Asymmetric.	STEM ¹⁷ BKS##IN - Matte black stem WHS##IN - Matte white stem BKSS##IN ¹⁸ - Matte black swivel stem WHSS##IN ¹⁸ - Matte white swivel stem CF#SS##IN ¹⁹ - Custom finish stem CF#SS##IN ^{18,19} - Custom finish swivel stem ¹⁷ Min 10" - max 72", specify length (##) in inches. ¹⁸ Not available with DMNC/DMRM/DR canopy options, or for 4" long cylinders when specified with FLR/CDR and integral driver. ¹⁹ Specify RAL#.	JA8 - JA8 compliant



AERA 2" CYLINDER

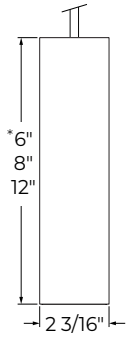
PENDANT, PENDANT ASYMMETRIC
DIRECT/INDIRECT, DIRECT



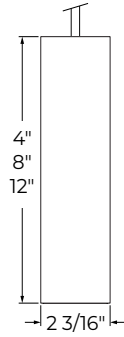
Dimensions

CYLINDER

Direct/Indirect



Direct



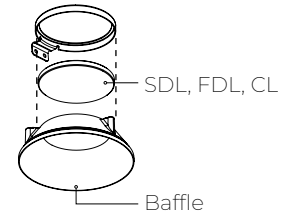
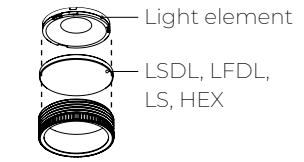
*Not available with Asymmetric.

Minimum heights - Cylinder

Size	Distribution	Integral driver in cylinder	Integral driver in canopy or J-box	Remote driver
Ø 2"	Direct/Indirect	NA	6"	6"
	Direct	7"	4"	4"

*Consult factory for maximum heights.

Lens and Accessories



BAFFLE

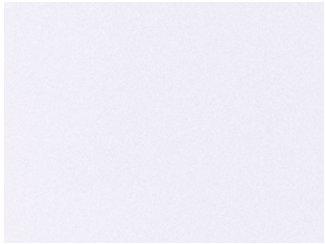
BVL Bevel	PHL Pinhole	BVLD Decorative bevel

AERA 2" CYLINDER

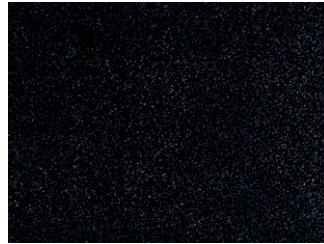
PENDANT, PENDANT ASYMMETRIC
DIRECT/INDIRECT, DIRECT



Finishes



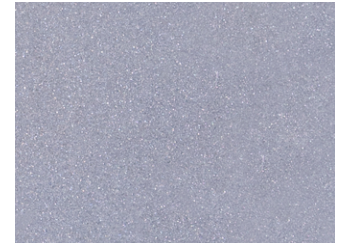
FTMW - Matte white



FTMB - Matte black



FSPC - Satin silver



FSSPC - Matte silver



FCHP - Champagne



FDBZ - Dark bronze

AERA 2" CYLINDER

PENDANT, PENDANT ASYMMETRIC
DIRECT/INDIRECT, DIRECT



Mounting

CANOPY

INTEGRAL DRIVER					
Order code	FLR Flat round canopy, 4" octagonal junction box	CDR Conduit feed, round canopy	DMNC Direct mount, new construction	DMRM Direct mount, remodel	DR Deep round canopy
Canopy type					
Distribution	Direct				Direct/Indirect Direct
Canopy size	Ø 4 1/2" Height 3/8"	Ø 5 1/2" Height 1 15/16"	Ø 2 3/16" Height 2"		Ø 5 5/8" Height 1 3/8"
Suspension	Power cord, Stem, Swivel stem ¹ ¹ Not available for 4" long cylinders specified with FLR/CDR.		Power cord, Stem		
Min. height	4" (Driver in junction box) 8" (Driver in cylinder)		8"		D/I - 6" (Pendant) D/I - 8" (Pendant Asymmetric) D - 4"
				Single wiring entry only. No daisy chain connections allowed.	D/I - 2 drivers in canopy D - 1 driver in canopy or cylinder
REMOTE DRIVER					
Order code	FLR Flat round canopy, 4" octagonal junction box	CDR Conduit feed, round canopy	DMNC Direct mount, new construction	DMRM Direct mount, remodel	DR Deep round canopy
Canopy type					
Distribution	Direct/Indirect Direct				
Canopy size	Ø 4 1/2" Height 3/8"	Ø 5 1/2" Height 1 15/16"	Ø 2 3/16" Height 2"		Ø 5 5/8" Height 1 3/8"
Suspension	Power cord, Stem, Swivel stem		Power cord, Stem		
Min. height	D/I - 6" (Pendant) D/I - 8" (Pendant Asymmetric) D - 4"				
				Single wiring entry only. No daisy chain connections allowed.	

AERA 2" CYLINDER

PENDANT, PENDANT ASYMMETRIC
DIRECT/INDIRECT, DIRECT



SUSPENSION

POWER CORD ¹	STEM	
PVC	Stem	Swivel stem ^{2,3}
Power Cord Lengths (*)	Stem Lengths (*)	
Min 18" Max 72"	Min 10" Max 72"	Min 10" Max 72" Max 45° tilt
¹ Not available with Asymmetric.	² Not available with DMNC/DMRM/DR canopy options, or for 4" long cylinders when specified with FLR/CDR and integral driver. ³ The total stem length (*) includes the 1" swivel base located inside the canopy.	

AERA 2" CYLINDER

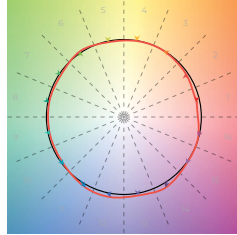
PENDANT, PENDANT ASYMMETRIC
DIRECT/INDIRECT, DIRECT



Color Quality

COLOR QUALITY - 3500K

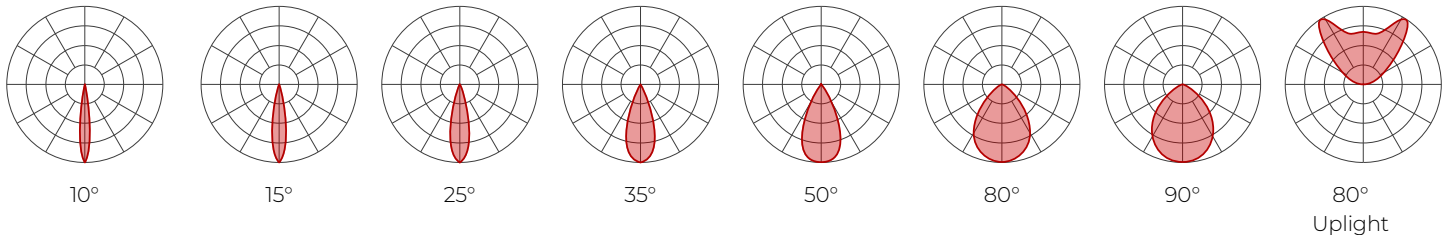
TM-30 R _r	91
TM-30 R _g	100
CRI	90+
R9	> 50



Photometrics

PENDANT

Values calculated based on 3500K, bevel baffle, and SDL lens option.



Delivered lumens (LM)

CRI	80+ CRI								90+ CRI								95+ CRI								
	BEAM	10°	15°	25°	35°	50°	80°	90°	Uplight	10°	15°	25°	35°	50°	80°	90°	Uplight	10°	15°	25°	35°	50°	80°	90°	Uplight
7 W	462	513	560	552	530	477	477	293	431	479	523	516	495	446	446	273	332	369	403	397	381	343	343	343	210
10 W	606	673	736	727	697	627	627	NA	566	629	688	679	651	586	586	NA	436	484	530	523	501	451	451	451	NA

Efficacy (LM/W)

CRI	80+ CRI								90+ CRI								95+ CRI								
	BEAM	10°	15°	25°	35°	50°	80°	90°	Uplight	10°	15°	25°	35°	50°	80°	90°	Uplight	10°	15°	25°	35°	50°	80°	90°	Uplight
7 W	66	73	80	79	76	68	68	42	62	68	75	74	71	64	64	39	47	53	58	57	54	49	49	49	30
10 W	61	67	74	73	70	63	63	NA	57	63	69	68	65	59	59	NA	44	48	53	52	50	45	45	45	NA

MULTIPLIERS

Please follow the multiplier tables to ensure correct lumen value. Beams, CCT, baffle styles, baffle colors, lensing and accessories will change the lumen value.

CCT	BAFFLE STYLE AND COLOR			LENS * (At baffle)		ACCESSORIES * (At light element)		
2200K	0.80	Bevel	White	1	SDL - Soft diffused lens, Solite	1	LSDL - Soft diffused lens, Solite	1
2400K	0.87		Black	1		FDL - Frosted lens		0.8
2700K	0.94	Pinhole	White	0.92	CL - Clear lens		1.1	LS - Linear spread
3000K	0.98		Black	0.92		NOL - No lens	1.1	
3500K	1	Decorative bevel	White	1	* When more than one lens or accessory is specified, multiply together the value of each lens and/or accessory. e.g. NOL + LSDL + LS = 1.1 x 1 x 0.84 = 0.924			
4000K	1.05		Black	1				
5000K	1.05							

DIRECT/INDIRECT - LPW CALCULATION

For Direct/Indirect performance values, follow the formula.

$$\left(\frac{\text{DIRECT LM} + \text{UPLIGHT LM}}{\text{DIRECT W} + \text{UPLIGHT W}} \right) = \text{LPW}$$

For SOLA and DUO, please consult factory.



AERA 2" CYLINDER

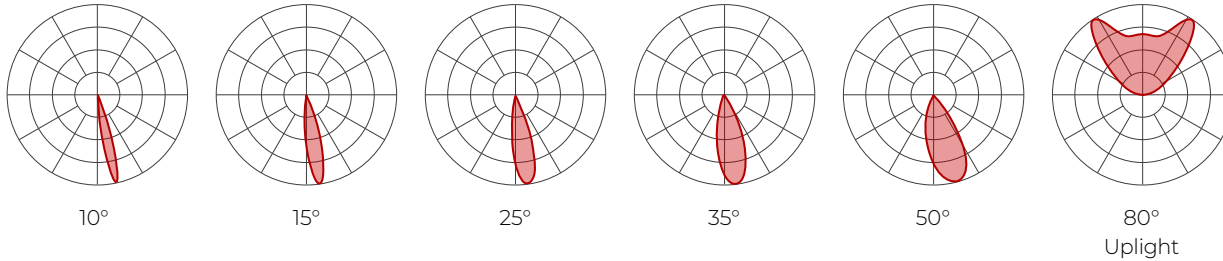
PENDANT, PENDANT ASYMMETRIC
DIRECT/INDIRECT, DIRECT



Photometrics

PENDANT ASYMMETRIC

Values calculated based on 3500K, bevel baffle, and SDL lens option.



Delivered lumens (LM)

CRI	80+ CRI						90+ CRI						95+ CRI					
	BEAM	10°	15°	25°	35°	50°	Uplight	10°	15°	25°	35°	50°	Uplight	10°	15°	25°	35°	50°
7 W	428	476	493	511	439	293	401	445	461	478	410	273	309	343	355	368	316	210
10 W	577	641	664	689	591	NA	539	599	621	644	552	NA	415	461	478	496	425	NA

Efficacy (LM/W)

CRI	80+ CRI						90+ CRI						95+ CRI					
	BEAM	10°	15°	25°	35°	50°	Uplight	10°	15°	25°	35°	50°	Uplight	10°	15°	25°	35°	50°
7 W	61	68	70	73	63	42	57	64	66	68	59	39	44	49	51	53	45	30
10 W	58	64	66	69	59	NA	54	60	62	64	55	NA	41	46	48	50	43	NA

MULTIPLIERS

Please follow the multiplier tables to ensure correct lumen value. Beams, CCT, baffle styles, baffle colors, lensing and accessories will change the lumen value.

CCT		BAFFLE STYLE AND COLOR			LENS * (At baffle)		ACCESSORIES * (At light element)	
2200K	0.80	Bevel	White	1	SDL - Soft diffused lens, Solite	1	LSDL - Soft diffused lens, Solite	1
2400K	0.87		Black	1	FDL - Frosted lens	0.8	LFDL - Frosted lens	0.8
2700K	0.94	Pinhole	White	0.92	CL - Clear lens	1.1	LS - Linear spread	0.84
3000K	0.98		Black	0.92	NOL - No lens	1.1	HEX - Hex louver	0.86
3500K	1	Decorative bevel	White	1	* When more than one lens or accessory is specified, multiply together the value of each lens and/or accessory. e.g. NOL + LSDL + LS = 1.1 x 1 x 0.84 = 0.924			
4000K	1.05		Black	1				
5000K	1.05							

For SOLA and DUO, please consult factory.

DIRECT/INDIRECT - LPW CALCULATION

For Direct/Indirect performance values, follow the formula.

$$\left(\frac{\text{DIRECT LM} + \text{UPLIGHT LM}}{\text{DIRECT W} + \text{UPLIGHT W}} \right) = \text{LPW}$$

AERA 2" CYLINDER

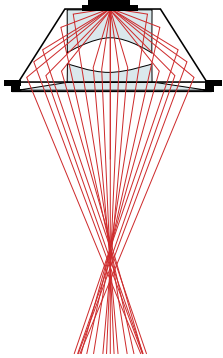
PENDANT, PENDANT ASYMMETRIC
DIRECT/INDIRECT, DIRECT



Technical Specifications

OPTIC

XPoint™ Refraction Technology optics provide precise optical control in a remarkably compact form. Micro optical paths from the chip on board converge and then disperse in precise beam angles, resulting in a crisp and exacting light quality.



LIGHT SOURCE

Static white

Compact COB (Chip-On-Board) LED module, available in 2200K, 2400K, 2700K, 3000K, 3500K, 4000K, and 5000K with a choice of 80+ CRI, 90+ CRI, or 95+ CRI, with elevated R9 value for 90+ CRI and above. Color consistency is maintained to within 2 SDCM. All LEDs have been tested in accordance with IESNA LM-80-08 and the results have shown L80 lumen maintenance greater than 60,000 hours. Absolute product photometry is measured and presented in accordance with IESNA LM-79, unless otherwise indicated.

Full spectrum static white

The full spectrum LED option offers improved color particularly in the cyan region that is beneficial in both healthcare and circadian lighting strategies. The cyan region in full spectrum LED is richer at the 480 nm range.

Chromawerx SOLA

Chromawerx SOLA is single-channel control that dims output while warming the color temperature in a pre-determined relationship. Two color temperature range options are offered: 3000K to 1800K, and 2700K to 1800K. A simple analog control adjusts a specially populated LED array to emulate the effect of dimming a filament source.

Chromawerx DUO

Chromawerx DUO offers a two-channel control system which uses analog or digital protocols for synchronous control of both cool to warm LED arrays - maintaining a CRI above 90. Two color temperature range options are offered: 6500K to 2700K, and 5000K to 2700K. The range of color DUO offers is useful for entraining circadian rhythms, stimulating alertness, and compensating for jet lag among other applications. The Chromawerx drivers are programmed to limit maximum light output and power usage across all color temperatures. When paired with DALI drivers (DDA/DDA8), color tuning follows a linear dimming curve.

ELECTRICAL

Unless otherwise specified, dimming down to 1%. At maximum driver load: efficiency > 84%, PF > 0.9, THD < 20%. ELV and TRIAC dimming performance (including minimum dimming percentage) subject to dimmer selection.

Integral: 0-10V, ELV, TRIAC

Remote: 0-10V, ELV, TRIAC, Lutron Hi-Lume 1% EcoSystem, DALI, eldoLED 0.1% SOLOdrive 0-10V, eldoLED 1% ECOdrive 0-10V, DMX, Lutron DALI-2 digital

Emergency battery option: Remotely-installed, long-life, high-temperature, maintenance-free, Bodine Lithium-Ion battery pack with self-test functionality, test switch and charge indicator. IOTA and Fulham options available upon request. Minimum of 90 minutes operation, and recharge time of 24 hours. For fixtures less than 10 W, the battery provides 6 W of emergency light output. For fixtures 10 W and over, the battery provides 10 W.

PoE

Depending on the PoE manufacturer selected, Lumenwerx will install the node in factory as either integral to the luminaire or as a remote module. Factory programming of the PoE node may or may not enable the following functionalities: lumen package, DUO (tunable white), QUADRO (RGBW), emergency battery backup, and sensor integration. These must be addressed and evaluated on a case-by-case basis.

CONSTRUCTION

Housing: Die-cast and extruded aluminum

Power cord: Black and white PVC, 18" to 72" standard length (Pendant option only)

Stem: Ø 1/2" rigid stem and swivel stem 10" to 72" standard length

Canopy: Flat, conduit feed, direct, and deep

Finish: Matte white, matte black, champagne, and dark bronze. Custom colors also available (provide RAL #). Satin silver and matte silver finishes are also available for Baffle.

Heat sink: Die-cast aluminum

Baffle: Die-cast aluminum

Baffle style: Bevel, pinhole, and decorative bevel

AERA 2" CYLINDER

PENDANT, PENDANT ASYMMETRIC
DIRECT/INDIRECT, DIRECT



WEIGHT

Direct/Indirect	Direct
6" : 1 lbs - 0.5 kg	4" : 0.6 lbs - 0.3 kg
8" : 1.2 lbs - 0.5 kg	8" : 1.2 lbs - 0.6 kg
12" : 1.4 lbs - 0.6 kg	12" : 1.5 lbs - 0.7 kg

LENS AND ACCESSORIES



Soft diffused lens, Solite



Frosted diffused lens



Clear lens



Linear spread



Hex louver

ENVIRONMENT

Ambient temperature at fixture location shall be within 0°C/32°F - 25°C/77°F, indoor dry or damp as well as outdoor damp use (canopies or marquees).

CERTIFICATIONS

ETL: Rated for indoor dry/damp locations. Conforms to UL Standard 1598 and certified to CAN/CSA Standard C22.2 No. 250.0.

Title 24 JA8: California Building Standards Code

Declare: [LBC Red List Approved](#)

WARRANTY

Lumenwerx provides a five-year limited warranty on electrical and mechanical performance of the luminaires, including the LED boards, drivers, and auxiliary electronics. Lumenwerx will repair or replace defective luminaires or components at our discretion, provided they have been installed and operated in accordance with our specifications. Other limitations apply, please refer to the full warranty on our website.