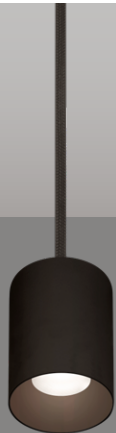


AERA 3" CYLINDER


PENDANT, PENDANT ASYMMETRIC
DIRECT/INDIRECT, DIRECT



Declare.



4" Height
Bevel




8" Height
Decorative Bevel



12" Height
Pinhole

True-to-size with a versatile minimalist esthetic, Aera Cylinder luminaires are high-performance fixtures, delivering visually comfortable lighting suitable for a wide range of applications.

Beam Angles



10° 15° 25° 35° 50° 80° 90° 80°-Up
Low UGR < 10 in 10°, 15°, 25°, 35°, and 50° beams


Performance

LUMEN OUTPUT ¹	WATTS	EFFICACY
1132 lm	10 W	113 lm/W
1545 lm	14 W	110 lm/W
2135 lm	20 W	107 lm/W

¹Lumen packages are assuming 3500K, 80+ CRI, 35° beam, bevel baffle, SDL lens option.

Light Source

Static White
Full Spectrum Static White
SOLA - Dim-to-Warm
DUO - Tunable White




COB

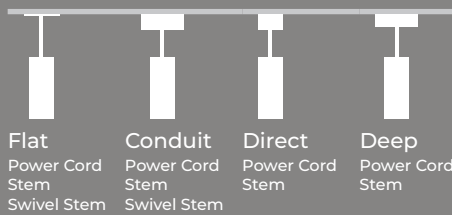
2 Step Color Binning
Up to 95+ CRI

Drivers / Protocols

1%, 0.1% Dimming Available
0-10V, TRIAC, ELV, Lutron EcoSystem, DALI, DMX
Emergency Battery (optional)

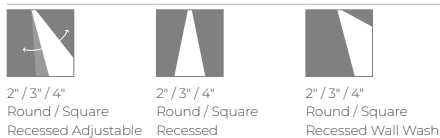
 Smart / Wireless Compatible

Mounting Options



Aera Family (Refer to other spec sheets)

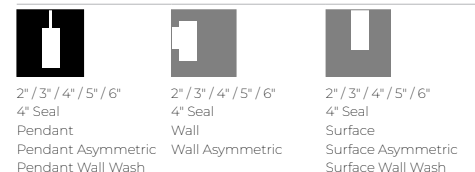
Downlight



Multi-aperture



Cylinder



AERA 3" CYLINDER

PENDANT, PENDANT ASYMMETRIC
DIRECT/INDIRECT, DIRECT



Project: _____

Type: _____



For a Title 24 JA8 compliant fixture, see page 3.

Order Guide

LUMINAIRE ID ¹	DISTRIBUTION	CYLINDER HEIGHT	CYLINDER FINISH	BAFFLE STYLE	BAFFLE FINISH	LENS* See page 4 for details
AE3CYP - Aera 3" Cylinder Pendant AE3CYPASY - Aera 3" Cylinder Pendant Asymmetric	DI - Direct/Indirect D - Direct	DIRECT/INDIRECT² 6IN³ - 6" 8IN - 8" 12IN - 12" CH#IN⁵ - Custom height	DIRECT 4IN⁴ - 4" 8IN - 8" 12IN - 12"	FTMW - Matte white FTMB - Matte black FCHP - Champagne FDBZ - Dark bronze CF# - Custom finish, specify RAL#	BVL - Bevel PHL - Pinhole BVLD - Decorative bevel	FTMW - Matte white FTMB - Matte black FSPC - Satin silver FSSPC - Matte silver FCHP - Champagne FDBZ - Dark bronze CF# - Custom finish, specify RAL#
¹ Pendant Wall Wash also available. Consult other spec sheet. ² Only available with DR canopy option when specified with integral drivers. ³ Not available with Asymmetric. ⁴ Not available with DMNC/DMRM canopy options when specified with integral drivers. ⁵ Specify height (#) in 1" increments only. Up to maximum 36". For minimum heights, see page 4.						

LIGHT SOURCE	DIRECT BEAM	COLOR QUALITY	CRI	COLOR TEMPERATURE	ACCESSORIES* See page 4 for details	VOLTAGE	
SW - Static white FS - Full spectrum static white	10DEG - 10° Very narrow spot 15DEG - 15° Narrow spot 25DEG - 25° Spot 35DEG - 35° Narrow flood 50DEG - 50° Wide flood 80DEG⁶ - 80° Very wide flood 90DEG⁶ - 90° Open flood	25TP⁷ - 2 Step MacAdam Ellipse 35TP - 3 Step MacAdam Ellipse	80CRI⁸ - 80+ CRI 90CRI⁸ - 90+ CRI 95CRI - 95+ CRI	22K⁹ - 2200K 24K¹⁰ - 2400K 27K - 2700K 30K - 3000K	35K - 3500K 40K - 4000K 50K¹⁰ - 5000K SOLA 30K18K - 3000K to 1800K 27K18K - 2700K to 1800K DUO 65K27K - 6500K to 2700K 50K27K - 5000K to 2700K	At light element^{11,12} (choose up to 2 options for SW/FS and 1 option for SOLA/DUO) LSDL - Soft diffused lens, Solite LFDL - Frosted diffused lens LS - Linear spread HEX¹³ - Hex louver NA - None	120V - 120V 277V - 277V UNV - 120V-277V 347V¹⁴ - 347V
SOLA - Dim-to-warm single channel control DUO - Tunable white 2-channel control	25DEG - 25° Spot 35DEG - 35° Narrow flood 60DEG - 60° Wide flood 80DEG⁶ - 80° Very wide flood 90DEG⁶ - 90° Open flood	35TP - 3 Step MacAdam Ellipse	90CRI - 90+ CRI				
⁶ Not available with Asymmetric. ⁷ Not available with full spectrum. ⁸ Not available with full spectrum. ⁹ Only available with 90+ CRI. ¹⁰ Not available with 95+ CRI. ¹¹ Separate codes with a "*" if more than one is specified, e.g. LSDL+LS. ¹² LSDL and LFDL cannot be combined. LS and HEX cannot be combined. ¹³ Not available with 80°/90° beam options. ¹⁴ Available with RD1 driver only. Please consult factory.							

* LSDL or LFDL at light element cannot be combined with SDL, FDL, or CL at baffle.

DIRECT WATTAGE ¹⁵	INDIRECT WATTAGE ¹⁷ Specify NA for Direct	DIMMING ¹⁸
PENDANT 10W - 10 W output, up to 1132 lm 14W - 14 W output, up to 1545 lm 20W¹⁶ - 20 W output, up to 2135 lm	PENDANT ASY. 10W - 10 W output, up to 1029 lm 14W - 14 W output, up to 1406 lm 20W¹⁶ - 20 W output, up to 1942 lm	INTEGRAL D1 - 1% 0-10V ELV¹⁹ - ELV 120V TRI¹⁹ - TRIAC 120V
SOLA 14W - 14 W output, up to 950 lm 18W¹⁶ - 18 W output, up to 1205 lm	SOLA 14W - 14 W output, up to 865 lm 18W¹⁶ - 18 W output, up to 1100 lm	REMOTE²⁰ RD1 - 1% 0-10V RELV²¹ - ELV 120V RTRI²¹ - TRIAC 120V RLDEI²² - Lutron Hi-lume 1% Eco
DUO 10W - 10 W output, up to 715 lm 14W - 14 W output, up to 1005 lm 19W¹⁶ - 19 W output, up to 1355 lm	DUO 10W - 10 W output, up to 650 lm 14W - 14 W output, up to 915 lm 19W¹⁶ - 19 W output, up to 1235 lm	SOLA SDI - Single 0-10V input SELV¹⁹ - ELV 120V STR1¹⁹ - TRIAC 120V
¹⁵ Lumen outputs are reduced with full spectrum, consult factory. ¹⁶ Not available for a Direct/Indirect fixture. ¹⁷ Lumen outputs are reduced with full spectrum, consult factory. ¹⁸ PoE (Power-over-Ethernet) compatible. Consult factory for details. ¹⁹ Available with 120V only. ²⁰ A remote driver box is provided. ²¹ Available with 120V only. ²² On-site commissioning is required. ²³ To specify, add +EB to the selected dimming option, e.g. RD1+EB.		

ELECTRICAL	CANOPY TYPE ²⁵	CANOPY FINISH	SUSPENSION	OPTION ³⁶
1C - 1 circuit 2C²⁴ - 2 circuits	FLR^{26,27} - Flat round canopy, 4" octagonal junction box CDR^{26,27} - Conduit feed, round canopy DMNC^{26,28} - Direct mount, new construction DMRM^{26,28,29} - Direct mount, remodel DR³⁰ - Deep round canopy	FTMW - Matte white FTMB - Matte black FCHP - Champagne FDBZ - Dark bronze CF# - Custom finish, specify RAL#	POWER CORD^{31,32} BPC##IN - Black PVC WPC##IN - White PVC	NA - None
²⁴ Available with Direct/Indirect only.	²⁵ See page 6 for details. ²⁶ Direct/Indirect requires a remote driver. ²⁷ For 4" long cylinders, driver has to be in j-box when specified with integral drivers. See page 6 for details. ²⁸ 4" long cylinders require a remote driver. ²⁹ Single wiring entry only. No daisy chain connections allowed. ³⁰ Can accommodate up to 2 drivers.		STEM³³ BKS##IN - Matte black stem WHS##IN - Matte white stem BKSS##IN³⁴ - Matte black swivel stem WHSS##IN³⁴ - Matte white swivel stem CF#S##IN³⁵ - Custom finish stem CF#SS##IN^{34,35} - Custom finish swivel stem	³⁶ To specify a JA8 compliant fixture, see page 3.
³¹ Min 18" - max 72", specify length (##) in inches. ³² Not available with Asymmetric. ³³ Min 10" - max 72", specify length (##) in inches. ³⁴ Not available with DMNC/DMRM/DR canopy options, or for 4" long cylinders when specified with FLR/CDR and integral driver. ³⁵ Specify RAL#.				

www.lumenwerx.com
T (514) 225-4304

© Lumenwerx, ULC. All rights reserved.



Lumenwerx reserves the right to modify product specifications without notification.
AERA3-CYLINDER-PENDANT-SPEC-REV8 January 12, 2026

AERA 3" CYLINDER

PENDANT, PENDANT ASYMMETRIC
DIRECT/INDIRECT, DIRECT
Title 24 JA8



Project: _____
Type: _____



Order Guide

LUMINAIRE ID ¹	DISTRIBUTION	CYLINDER HEIGHT	CYLINDER FINISH	BAFFLE STYLE	BAFFLE FINISH
	D				
AE3CYP - Aera 3" Cylinder Pendant AE3CYPASY - Aera 3" Cylinder Pendant Asymmetric ¹ Pendant Wall Wash also available. Consult other spec sheet.	D - Direct	4IN ² - 4" 8IN - 8" 12IN - 12" CH#IN ³ - Custom height ² Not available with DMNC/DMRM canopy options when specified with integral drivers. ³ Specify height (#) in 1" increments only. Up to maximum 36". For minimum heights, see page 4.	FTMW - Matte white FTMB - Matte black FCHP - Champagne FDBZ - Dark bronze CF# - Custom finish, specify RAL#	BVL - Bevel PHL - Pinhole BVLD - Decorative bevel	FTMW - Matte white FTMB - Matte black FSPC - Satin silver FSSPC - Matte silver FCHP - Champagne FDBZ - Dark bronze CF# - Custom finish, specify RAL#

LENS *	LIGHT SOURCE	DIRECT BEAM	COLOR QUALITY	CRI	COLOR TEMP.	ACCESSORY *	VOLTAGE
See page 4 for details				90CRI		See page 4 for details	
At baffle Specify NOL for Pinhole SDL - Soft diffused lens, Solite FDL - Frosted diffused lens CL - Clear lens NOL - No lens	SW - Static white SOLA - Dim-to-warm single channel control	15DEG - 15° Narrow spot 25DEG - 25° Spot 35DEG - 35° Narrow flood 50DEG - 50° Wide flood 80DEG ⁴ - 80° Very wide flood 90DEG ⁴ - 90° Open flood ⁴ Not available with Asymmetric.	2STP - 2 Step MacAdam Ellipse 3STP - 3 Step MacAdam Ellipse 3STP - 3 Step MacAdam Ellipse	90CRI - 90+ CRI	27K - 2700K 30K - 3000K 35K - 3500K 40K - 4000K SOLA ⁵ - Dim-to-warm single channel control ⁵ 3500K to 2200K	At light element LSDL - Soft diffused lens, Solite LFDL - Frosted diffused lens NA - None	120V - 120V 277V - 277V UNV - 120V-277V

* LSDL or LFDL at light element cannot be combined with SDL, FDL, or CL at baffle. For SOLA, one of the following lenses must be specified: SDL, FDL, LSDL, or LFDL.

DIRECT WATTAGE		INDIRECT WATTAGE	DIMMING	ELECTRICAL	
		NA		1C	
PENDANT 10W - 10 W output, up to 1132 lm 14W - 14 W output, up to 1545 lm 12W - 12 W output, up to 725 lm	PENDANT ASY. 10W - 10 W output, up to 1029 lm 14W - 14 W output, up to 1406 lm 12W - 12 W output, up to 625 lm	NA - Not applicable	INTEGRAL D1 - 1% 0-10V ELV ⁶ - ELV 120V TRI ⁶ - TRIAC 120V ⁶ Available with 120V only. SD1 - Single 0-10V input SELV ⁶ - ELV 120V STRI ⁶ - TRIAC 120V	REMOTE ⁷ RD1 - 1% 0-10V RELV ⁸ - ELV 120V RTRI ⁸ - TRIAC 120V RLDE1 ⁹ - Lutron Hi-Lume 1% Eco ⁷ A remote driver box is provided. ⁸ Available with 120V only. ⁹ On-site commissioning is required.	1C - 1 circuit

CANOPY TYPE ¹⁰	CANOPY FINISH	SUSPENSION	OPTION
			JA8
FLR ¹¹ - Flat round canopy, 4" octagonal junction box CDR ¹¹ - Conduit feed, round canopy DMNC ¹² - Direct mount, new construction DMRM ^{12,13} - Direct mount, remodel DR ¹⁴ - Deep round canopy ¹⁰ See page 6 for details. ¹¹ For 4" long cylinders, driver has to be in j-box when specified with integral drivers. See page 6 for details. ¹² 4" long cylinders require a remote driver. ¹³ Single wiring entry only. No daisy chain connections allowed. ¹⁴ Can accommodate up to 2 drivers.	FTMW - Matte white FTMB - Matte black FCHP - Champagne FDBZ - Dark bronze CF# - Custom finish, specify RAL#	POWER CORD ^{15,16} BPC##IN - Black PVC WPC##IN - White PVC ¹⁵ Min 18" - max 72", specify length (##) in inches. ¹⁶ Not available with Asymmetric.	STEM ¹⁷ BKS##IN - Matte black stem WHS##IN - Matte white stem BKSS##IN ¹⁸ - Matte black swivel stem WHSS##IN ¹⁸ - Matte white swivel stem CF#S##IN ¹⁹ - Custom finish stem CF#SS##IN ^{18,19} - Custom finish swivel stem ¹⁷ Min 10" - max 72", specify length (##) in inches. ¹⁸ Not available with DMNC/DMRM/DR canopy options, or for 4" long cylinders when specified with FLR/CDR and integral driver. ¹⁹ Specify RAL#.



AERA 3" CYLINDER

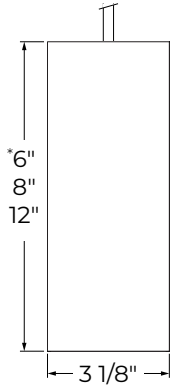
PENDANT, PENDANT ASYMMETRIC
DIRECT/INDIRECT, DIRECT



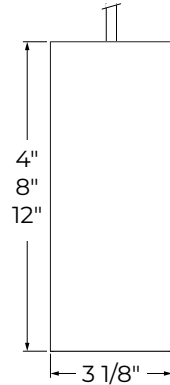
Dimensions

CYLINDER

Direct/Indirect



Direct



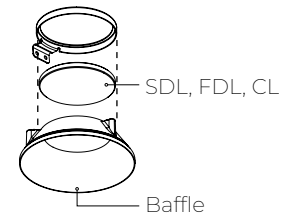
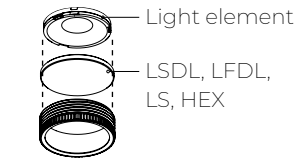
*Not available with Asymmetric.

Minimum heights - Cylinder

Size	Distribution	Integral driver in cylinder	Integral driver in canopy or J-box	Remote driver
Ø 3"	Direct/Indirect	NA	6"	6"
	Direct	7"	4"	4"

*Consult factory for maximum heights.

Lens and Accessories



BAFFLE

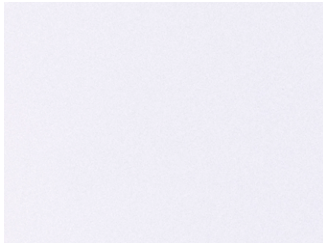
BVL Bevel	PHL Pinhole	BVLD Decorative bevel
<p>■ Baffle finish ■ Matte black</p>		

AERA 3" CYLINDER

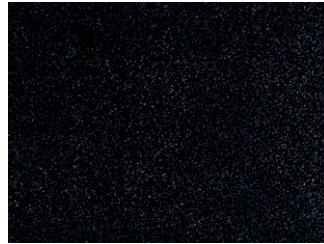
PENDANT, PENDANT ASYMMETRIC
DIRECT/INDIRECT, DIRECT



Finishes



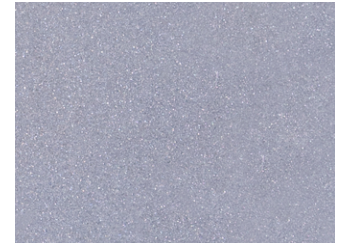
FTMW - Matte white



FTMB - Matte black



FSPC - Satin silver



FSSPC - Matte silver



FCHP - Champagne



FDBZ - Dark bronze

AERA 3" CYLINDER

PENDANT, PENDANT ASYMMETRIC
DIRECT/INDIRECT, DIRECT



Mounting

CANOPY

INTEGRAL DRIVER					
Order code	FLR Flat round canopy, 4" octagonal junction box	CDR Conduit feed, round canopy	DMNC Direct mount, new construction	DMRM Direct mount, remodel	DR Deep round canopy
Canopy type					
Distribution	Direct				Direct/Indirect Direct
Canopy size	Ø 4 1/2" Height 3/8"	Ø 5 1/2" Height 1 15/16"	Ø 3 1/8" Height 2"		Ø 5 5/8" Height 1 3/8"
Suspension	Power cord, Stem, Swivel stem ¹ ¹ Not available for 4" long cylinders specified with FLR/CDR.		Power cord, Stem		
Min. height	4" (Driver in junction box) 8" (Driver in cylinder)		8"		D/I - 6" (Pendant) D/I - 8" (Pendant Asymmetric) D - 4"
				Single wiring entry only. No daisy chain connections allowed.	D/I - 2 drivers in canopy D - 1 driver in canopy or cylinder
REMOTE DRIVER					
Order code	FLR Flat round canopy, 4" octagonal junction box	CDR Conduit feed, round canopy	DMNC Direct mount, new construction	DMRM Direct mount, remodel	DR Deep round canopy
Canopy type					
Distribution	Direct/Indirect Direct				
Canopy size	Ø 4 1/2" Height 3/8"	Ø 5 1/2" Height 1 15/16"	Ø 3 1/8" Height 2"		Ø 5 5/8" Height 1 3/8"
Suspension	Power cord, Stem, Swivel stem		Power cord, Stem		
Min. height	D/I - 6" (Pendant) D/I - 8" (Pendant Asymmetric) D - 4"				
				Single wiring entry only. No daisy chain connections allowed.	

AERA 3" CYLINDER

PENDANT, PENDANT ASYMMETRIC
DIRECT/INDIRECT, DIRECT



SUSPENSION

POWER CORD ¹		STEM	
PVC		Stem	Swivel stem ^{2,3}
Power Cord Lengths (*)		Stem Lengths (*)	
Min 18" Max 72"		Min 10" Max 72"	Min 10" Max 72" Max 45° tilt
¹ Not available with Asymmetric.		² Not available with DMNC/DMRM/DR canopy options, or for 4" long cylinders when specified with FLR/CDR and integral driver. ³ The total stem length (*) includes the 1" swivel base located inside the canopy.	

AERA 3" CYLINDER

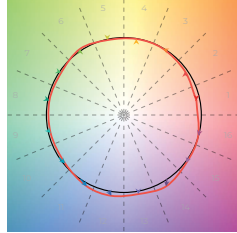
PENDANT, PENDANT ASYMMETRIC
DIRECT/INDIRECT, DIRECT



Color Quality

COLOR QUALITY - 3500K

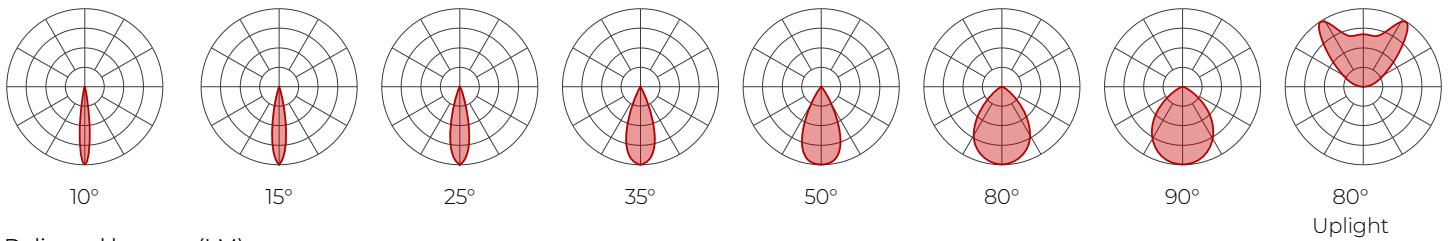
TM-30 R _r	90
TM-30 R _g	100
CRI	90+
R9	> 50



Photometrics

PENDANT

Values calculated based on 3500K, bevel baffle, and SDL lens option.



Delivered lumens (LM)

CRI	80+ CRI								90+ CRI								95+ CRI							
	BEAM	10°	15°	25°	35°	50°	80°	90°	Uplight	10°	15°	25°	35°	50°	80°	90°	Uplight	10°	15°	25°	35°	50°	80°	90°
10 W	950	1056	1127	1132	1003	902	902	683	888	987	1053	1058	937	843	843	683	684	760	811	815	721	649	649	491
14 W	1297	1441	1539	1545	1370	1233	1233	939	1212	1347	1438	1444	1280	1152	1152	877	933	1037	1107	1112	986	887	887	675
20 W	1792	1991	2125	2135	1892	1703	1703	NA	1675	1861	1986	1995	1768	1591	1591	NA	1290	1433	1529	1536	1361	1225	1225	NA

Efficacy (LM/W)

CRI	80+ CRI								90+ CRI								95+ CRI							
	BEAM	10°	15°	25°	35°	50°	80°	90°	Uplight	10°	15°	25°	35°	50°	80°	90°	Uplight	10°	15°	25°	35°	50°	80°	90°
10 W	95	106	113	113	100	90	90	68	89	99	105	106	94	84	84	64	68	76	81	81	72	65	65	49
14 W	93	103	110	110	98	88	88	67	87	96	103	103	91	82	82	63	67	74	79	79	70	63	63	48
20 W	90	100	106	107	95	85	85	NA	84	93	99	100	88	80	80	NA	64	72	76	77	68	61	61	NA

MULTIPLIERS

Please follow the multiplier tables to ensure correct lumen value. Beams, CCT, baffle styles, baffle colors, lensing and accessories will change the lumen value.

CCT	BAFFLE STYLE AND COLOR		LENS * (At baffle)		ACCESSORIES * (At light element)	
2200K	0.80	Bevel	White	1	SDL - Soft diffused lens, Solite	1
2400K	0.87		Black	1	FDL - Frosted lens	0.8
2700K	0.94	Pinhole	White	0.92	CL - Clear lens	1.1
3000K	0.98		Black	0.92	NOL - No lens	1.1
3500K	1	Decorative bevel	White	1	LSL - Soft diffused lens, Solite	1
4000K	1.05		Black	1	LFDL - Frosted lens	0.8
5000K	1.05				LS - Linear spread	0.84
					HEX - Hex louver	0.86

* When more than one lens or accessory is specified, multiply together the value of each lens and/or accessory.
e.g. NOL + LSDL + LS = 1.1 x 1 x 0.84 = 0.924

DIRECT/INDIRECT - LPW CALCULATION

For Direct/Indirect performance values, follow the formula.

$$\left(\frac{\text{DIRECT LM} + \text{UPLIGHT LM}}{\text{DIRECT W} + \text{UPLIGHT W}} \right) = \text{LPW}$$

For SOLA and DUO, please consult factory.



AERA 3" CYLINDER

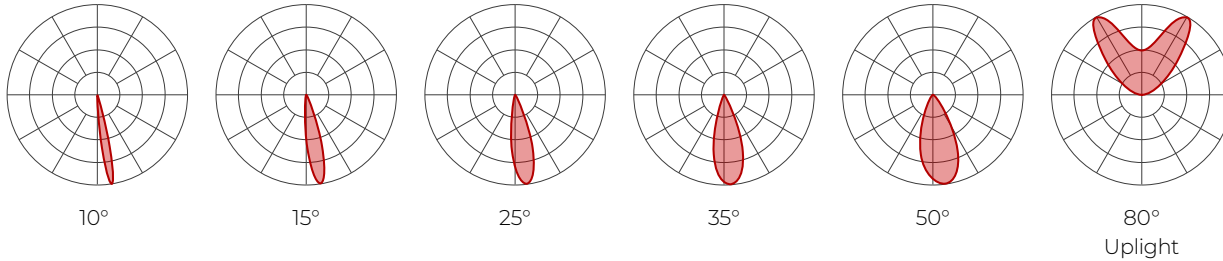
PENDANT, PENDANT ASYMMETRIC
DIRECT/INDIRECT, DIRECT



Photometrics

PENDANT ASYMMETRIC

Values calculated based on 3500K, bevel baffle, and SDL lens option.



Delivered lumens (LM)

BEAM	80+ CRI						90+ CRI						95+ CRI					
	10°	15°	25°	35°	50°	Uplight	10°	15°	25°	35°	50°	Uplight	10°	15°	25°	35°	50°	Uplight
10 W	823	914	1029	1018	937	683	770	855	962	952	876	683	592	658	741	733	675	491
14 W	1124	1249	1406	1391	1280	939	1050	1167	1314	1300	1197	877	809	899	1012	1001	921	675
20 W	1553	1725	1942	1921	1768	NA	1451	1612	1815	1795	1653	NA	1117	1241	1397	1382	1272	NA

Efficacy (LM/W)

BEAM	80+ CRI						90+ CRI						95+ CRI					
	10°	15°	25°	35°	50°	Uplight	10°	15°	25°	35°	50°	Uplight	10°	15°	25°	35°	50°	Uplight
10 W	82	91	103	102	94	68	77	85	96	95	88	64	59	66	74	73	67	49
14 W	80	89	100	99	91	67	75	83	94	93	85	63	58	64	72	71	66	48
20 W	78	86	97	96	88	NA	73	81	91	90	83	NA	56	62	70	69	64	NA

MULTIPLIERS

Please follow the multiplier tables to ensure correct lumen value. Beams, CCT, baffle styles, baffle colors, lensing and accessories will change the lumen value.

CCT		BAFFLE STYLE AND COLOR			LENS * (At baffle)		ACCESSORIES * (At light element)	
2200K	0.80	Bevel	White	1	SDL - Soft diffused lens, Solite	1	LSDL - Soft diffused lens, Solite	1
2400K	0.87		Black	1	FDL - Frosted lens	0.8	LFDL - Frosted lens	0.8
2700K	0.94	Pinhole	White	0.92	CL - Clear lens	1.1	LS - Linear spread	0.84
3000K	0.98		Black	0.92	NOL - No lens	1.1	HEX - Hex louver	0.86
3500K	1	Decorative bevel	White	1	* When more than one lens or accessory is specified, multiply together the value of each lens and/or accessory. e.g. NOL + LSDL + LS = 1.1 x 1 x 0.84 = 0.924			
4000K	1.05		Black	1				
5000K	1.05							

For SOLA and DUO, please consult factory.

DIRECT/INDIRECT - LPW CALCULATION

For Direct/Indirect performance values, follow the formula.

$$\frac{\left(\frac{\text{DIRECT LM}}{\text{W}} + \frac{\text{UPLIGHT LM}}{\text{W}} \right)}{\left(\frac{\text{DIRECT W}}{\text{W}} + \frac{\text{UPLIGHT W}}{\text{W}} \right)} = \text{LPW}$$

AERA 3" CYLINDER

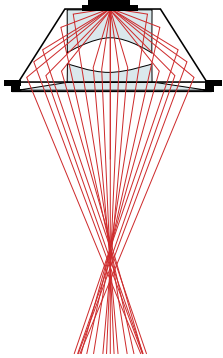
PENDANT, PENDANT ASYMMETRIC
DIRECT/INDIRECT, DIRECT



Technical Specifications

OPTIC

XPoint™ Refraction Technology optics provide precise optical control in a remarkably compact form. Micro optical paths from the chip on board converge and then disperse in precise beam angles, resulting in a crisp and exacting light quality.



LIGHT SOURCE

Static white

Compact COB (Chip-On-Board) LED module, available in 2200K, 2400K, 2700K, 3000K, 3500K, 4000K, and 5000K with a choice of 80+ CRI, 90+ CRI, or 95+ CRI, with elevated R9 value for 90+ CRI and above. Color consistency is maintained to within 2 SDCM. All LEDs have been tested in accordance with IESNA LM-80-08 and the results have shown L80 lumen maintenance greater than 60,000 hours. Absolute product photometry is measured and presented in accordance with IESNA LM-79, unless otherwise indicated.

Full spectrum static white

The full spectrum LED option offers improved color particularly in the cyan region that is beneficial in both healthcare and circadian lighting strategies. The cyan region in full spectrum LED is richer at the 480 nm range.

Chromawerx SOLA

Chromawerx SOLA is single-channel control that dims output while warming the color temperature in a pre-determined relationship. Two color temperature range options are offered: 3000K to 1800K, and 2700K to 1800K. A simple analog control adjusts a specially populated LED array to emulate the effect of dimming a filament source.

Chromawerx DUO

Chromawerx DUO offers a two-channel control system which uses analog or digital protocols for synchronous control of both cool to warm LED arrays - maintaining a CRI above 90. Two color temperature range options are offered: 6500K to 2700K, and 5000K to 2700K. The range of color DUO offers is useful for entraining circadian rhythms, stimulating alertness, and compensating for jet lag among other applications. The Chromawerx drivers are programmed to limit maximum light output and power usage across all color temperatures. When paired with DALI drivers (DDA/DDA8), color tuning follows a linear dimming curve.

ELECTRICAL

Unless otherwise specified, dimming down to 1%. At maximum driver load: efficiency > 84%, PF > 0.9, THD < 20%. ELV and TRIAC dimming performance (including minimum dimming percentage) subject to dimmer selection.

Integral: 0-10V, ELV, TRIAC

Remote: 0-10V, ELV, TRIAC, Lutron Hi-Lume 1% EcoSystem, DALI, eldoLED 0.1% SOLOdrive 0-10V, eldoLED 1% ECOdrive 0-10V, DMX, Lutron DALI-2 digital

Emergency battery option: Remotely-installed, long-life, high-temperature, maintenance-free, Bodine Lithium-Ion battery pack with self-test functionality, test switch and charge indicator. IOTA and Fulham options available upon request. Minimum of 90 minutes operation, and recharge time of 24 hours. For fixtures less than 10 W, the battery provides 6 W of emergency light output. For fixtures 10 W and over, the battery provides 10 W.

PoE

Depending on the PoE manufacturer selected, Lumenwerx will install the node in factory as either integral to the luminaire or as a remote module. Factory programming of the PoE node may or may not enable the following functionalities: lumen package, DUO (tunable white), QUADRO (RGBW), emergency battery backup, and sensor integration. These must be addressed and evaluated on a case-by-case basis.

CONSTRUCTION

Housing: Die-cast and extruded aluminum

Power cord: Black and white PVC, 18" to 72" standard length (Pendant option only)

Stem: Ø 1/2" rigid stem and swivel stem 10" to 72" standard length

Canopy: Flat, conduit feed, direct, and deep

Finish: Matte white, matte black, champagne, and dark bronze.

Custom colors also available (provide RAL #). Satin silver and matte silver finishes are also available for Baffle.

Heat sink: Die-cast aluminum

Baffle: Die-cast aluminum

Baffle style: Bevel, pinhole, and decorative bevel

AERA 3" CYLINDER

PENDANT, PENDANT ASYMMETRIC
DIRECT/INDIRECT, DIRECT



WEIGHT

Direct/Indirect	Direct
6" : 1.4 lbs - 0.6 kg	4" : 1.4 lbs - 0.6 kg
8" : 1.8 lbs - 0.8 kg	8" : 2 lbs - 0.9 kg
12" : 2.3 lbs - 1 kg	12" : 2.4 lbs - 1.1 kg

LENS AND ACCESSORIES



Soft diffused lens, Solite



Frosted diffused lens



Clear lens



Linear spread



Hex louver

ENVIRONMENT

Ambient temperature at fixture location shall be within 0°C/32°F - 25°C/77°F, indoor dry or damp as well as outdoor damp use (canopies or marquees).

CERTIFICATIONS

ETL: Rated for indoor dry/damp locations. Conforms to UL Standard 1598 and certified to CAN/CSA Standard C22.2 No. 250.0.

Title 24 JAB: California Building Standards Code

Declare: [LBC Red List Approved](#)

WARRANTY

Lumenwerx provides a five-year limited warranty on electrical and mechanical performance of the luminaires, including the LED boards, drivers, and auxiliary electronics. Lumenwerx will repair or replace defective luminaires or components at our discretion, provided they have been installed and operated in accordance with our specifications. Other limitations apply, please refer to the full warranty on our website.