

# AERA 3" CYLINDER

## SURFACE WALL WASH



Declare.



4" Height



8" Height



12" Height

True-to-size with a versatile minimalist esthetic, Aera Cylinder luminaires are high-performance fixtures, delivering visually comfortable lighting suitable for a wide range of applications.

### Mounting Options



Flat

Conduit

Direct

### Beam Angle



Low UGR < 10

Wall Wash

### Performance

LUMEN OUTPUT <sup>1</sup>	WATTS	EFFICACY
601 lm	10 W	43 lm/W
822 lm	14 W	59 lm/W
1135 lm	20 W	57 lm/W

<sup>1</sup> Lumen packages are assuming 3500K, 80+ CRI.

### Light Source

Static White  
Full Spectrum Static White  
SOLA - Dim-to-Warm  
DUO - Tunable White



### COB

2 Step Color Binning  
Up to 95+ CRI

### Drivers / Protocols

1%, 0.1% Dimming Available  
0-10V, TRIAC, ELV, Lutron EcoSystem, DALI, DMX  
Emergency Battery (optional)



Smart / Wireless Compatible

### Aera Family (Refer to other spec sheets)

#### Downlight



2" / 3" / 4"  
Round / Square  
Recessed Adjustable



2" / 3" / 4"  
Round / Square  
Recessed



2" / 3" / 4"  
Round / Square  
Recessed Wall Wash

#### Multi-aperture



2" / 3" / 4"  
Round / Square  
Recessed Adjustable



2" / 3" / 4"  
Round / Square  
Recessed



2" / 3" / 4"  
Round / Square  
Recessed Wall Wash

#### Cylinder



2" / 3" / 4" / 5" / 6"  
4" Seal  
Pendant  
Pendant Asymmetric  
Pendant Wall Wash



2" / 3" / 4" / 5" / 6"  
4" Seal  
Wall  
Wall Asymmetric



2" / 3" / 4" / 5" / 6"  
4" Seal  
Surface  
Surface Asymmetric  
Surface Wall Wash

www.lumenwerx.com  
T (514) 225-4304

© Lumenwerx, ULC. All rights reserved.



Lumenwerx reserves the right to modify product specifications without notification.  
AERA3-CYLINDER-SURFACE-WW-SPEC-REV8 January 12, 2026

# AERA 3" CYLINDER

## SURFACE WALL WASH



Project: \_\_\_\_\_

Type: \_\_\_\_\_



For a Title 24 JA8 compliant fixture, see page 3.

### Order Guide

LUMINAIRE ID <sup>1</sup>	DISTRIBUTION	CYLINDER HEIGHT	CYLINDER FINISH	BAFFLE STYLE	BAFFLE FINISH
<b>AE3CYSWW</b>	<b>D</b>			<b>WW</b>	
<b>AE3CYSWW</b> - Aera 3" Cylinder Surface Wall Wash  <sup>1</sup> Surface (direct) and Surface Asymmetric also available. Consult other spec sheet.	<b>D</b> - Direct	<b>4IN</b> <sup>2</sup> - 4" <b>8IN</b> - 8" <b>12IN</b> - 12" <b>CH#IN</b> <sup>3</sup> - Custom height  <sup>2</sup> Not available with DMNC/DMRM canopy options when specified with integral drivers. <sup>3</sup> Specify height (#) in 1" increments only. Up to maximum 36". For minimum heights, see page 4.	<b>FTMW</b> - Matte white <b>FTMB</b> - Matte black <b>FCHP</b> - Champagne <b>FDBZ</b> - Dark bronze <b>CF#</b> - Custom finish, specify RAL#	<b>WW</b> - Wall wash	<b>FTMW</b> - Matte white <b>FTMB</b> - Matte black <b>FSPC</b> - Satin silver <b>FSSPC</b> - Matte silver <b>FCHP</b> - Champagne <b>FDBZ</b> - Dark bronze <b>CF#</b> - Custom finish, specify RAL#

LENS	LIGHT SOURCE	BEAM	COLOR QUALITY	CRI	COLOR TEMPERATURE	VOLTAGE
<b>WW</b>		<b>WW</b>				
<b>WW</b> - Wall wash diffuser	<b>SW</b> - Static white <b>FS</b> - Full spectrum static white  <b>SOLA</b> - Dim-to-warm single channel control <b>DUO</b> - Tunable white 2-channel control	<b>WW</b> - Wall wash	<b>2STP</b> <sup>4</sup> - 2 Step MacAdam Ellipse <b>3STP</b> - 3 Step MacAdam Ellipse  <sup>4</sup> Not available with full spectrum.	<b>80CRI</b> <sup>5</sup> - 80+ CRI <b>90CRI</b> <sup>5</sup> - 90+ CRI <b>95CRI</b> - 95+ CRI  <sup>5</sup> Not available with full spectrum.	<b>22K</b> <sup>6</sup> - 2200K <b>24K</b> <sup>7</sup> - 2400K <b>27K</b> - 2700K <b>30K</b> - 3000K <b>35K</b> - 3500K <b>40K</b> - 4000K <b>50K</b> <sup>7</sup> - 5000K  <sup>6</sup> Only available with 90+ CRI. <sup>7</sup> Not available with 95+ CRI.	<b>120V</b> - 120V <b>277V</b> - 277V <b>UNV</b> - 120V-277V <b>347V</b> <sup>8</sup> - 347V  <sup>8</sup> Available with RD1 driver only. Please consult factory.
			<b>3STP</b> - 3 Step MacAdam Ellipse	<b>90CRI</b> - 90+ CRI	<b>SOLA</b> <b>30K18K</b> - 3000K to 1800K <b>27K18K</b> - 2700K to 1800K  <b>DUO</b> <b>65K27K</b> - 6500K to 2700K <b>50K27K</b> - 5000K to 2700K	

WATTAGE <sup>9</sup>	DIMMING <sup>10</sup>	CANOPY TYPE <sup>16</sup>	CANOPY FINISH Specify NA for DMNC and DMRM	OPTION <sup>20</sup>
				<b>NA</b>
<b>10W</b> - 10 W output, up to 601 lm <b>14W</b> - 14 W output, up to 822 lm <b>20W</b> - 20 W output, up to 1135 lm  <sup>9</sup> Lumen outputs are reduced with full spectrum, consult factory.	<b>INTEGRAL</b> <b>D1</b> - 1% 0-10V <b>ELV</b> <sup>11</sup> - ELV 120V <b>TRI</b> <sup>11</sup> - TRIAC 120V  <sup>10</sup> PoE (Power-over-Ethernet) compatible. Consult factory for details. <sup>11</sup> Available with 120V only.	<b>REMOTE</b> <sup>12</sup> <b>RD1</b> - 1% 0-10V <b>RELV</b> <sup>13</sup> - ELV 120V <b>RTRI</b> <sup>13</sup> - TRIAC 120V <b>RLDE1</b> <sup>14</sup> - Lutron Hi-Lume 1% Eco <b>RDA</b> <sup>14</sup> - DALI <b>RELD1</b> - eldoLED 1% ECOdrive 0-10V <b>RELD0</b> - eldoLED 0.1% SOLOdrive 0-10V <b>+EB</b> <sup>15</sup> - Emergency battery  <sup>12</sup> A remote driver box is provided. <sup>13</sup> Available with 120V only. <sup>14</sup> On-site commissioning is required. <sup>15</sup> To specify, add +EB to the selected dimming option, e.g. RD1+EB.	<b>FLR</b> <sup>17</sup> - Flat round canopy, 4" octagonal junction box <b>CDR</b> <sup>17</sup> - Conduit feed, round canopy <b>DMNC</b> <sup>18</sup> - Direct mount, new construction <b>DMRM</b> <sup>18,19</sup> - Direct mount, remodel  <sup>16</sup> See page 5 for details. <sup>17</sup> For 4" long cylinders, driver has to be in j-box when specified with integral drivers. See page 5 for details. <sup>18</sup> 4" long cylinders require a remote driver. <sup>19</sup> Single wiring entry only. No daisy chain connections allowed.	<b>FTMW</b> - Matte white <b>FTMB</b> - Matte black <b>FCHP</b> - Champagne <b>FDBZ</b> - Dark bronze <b>CF#</b> - Custom finish, specify RAL# <b>NA</b> - Not applicable  <sup>20</sup> To specify a JA8 compliant fixture, see page 3.
<b>SOLA</b> <b>14W</b> - 14 W output, up to 760 lm <b>18W</b> - 18 W output, up to 1050 lm  <b>DUO</b> <b>10W</b> - 10 W output, up to 575 lm <b>14W</b> - 18 W output, up to 805 lm <b>19W</b> - 19 W output, up to 970 lm	<b>SOLA</b> <b>SD1</b> - Single 0-10V input <b>SELV</b> <sup>11</sup> - ELV 120V <b>STRI</b> <sup>11</sup> - TRIAC 120V	<b>SOLA</b> <b>RSD1</b> - Single 0-10V input <b>RSELV</b> <sup>13</sup> - ELV 120V <b>RSTRI</b> <sup>13</sup> - TRIAC 120V  <b>DUO</b> <b>RDMX</b> <sup>14</sup> - DMX <b>RDDA</b> <sup>14</sup> - DALI DT6 <b>RDDA8</b> <sup>14</sup> - DALI DT8 <b>RDDI</b> - Dual 0-10V input for CCT/intensity <b>RLD2</b> <sup>14</sup> - Lutron DALI-2 digital <b>+EB</b> <sup>15</sup> - Emergency battery		



# AERA 3" CYLINDER

## SURFACE WALL WASH

Title 24 JA8



Project: \_\_\_\_\_

Type: \_\_\_\_\_



### Order Guide

LUMINAIRE ID <sup>1</sup>	DISTRIBUTION	CYLINDER HEIGHT	CYLINDER FINISH	BAFFLE STYLE	BAFFLE FINISH
<b>AE3CYSWW</b>	<b>D</b>			<b>WW</b>	
<b>AE3CYSWW</b> - Aera 3" Cylinder Surface Wall Wash  <sup>1</sup> Surface (direct) and Surface Asymmetric also available. Consult other spec sheet.	<b>D</b> - Direct	<b>4IN</b> <sup>2</sup> - 4" <b>8IN</b> - 8" <b>12IN</b> - 12" <b>CH#IN</b> <sup>3</sup> - Custom height  <sup>2</sup> Not available with DMNC/DMRM canopy options when specified with integral drivers. <sup>3</sup> Specify height (#) in 1" increments only. Up to maximum 36". For minimum heights, see page 4.	<b>FTMW</b> - Matte white <b>FTMB</b> - Matte black <b>FCHP</b> - Champagne <b>FDBZ</b> - Dark bronze <b>CF#</b> - Custom finish, specify RAL#	<b>WW</b> - Wall wash	<b>FTMW</b> - Matte white <b>FTMB</b> - Matte black <b>FSPC</b> - Satin silver <b>FSSPC</b> - Matte silver <b>FCHP</b> - Champagne <b>FDBZ</b> - Dark bronze <b>CF#</b> - Custom finish, specify RAL#

LENS	LIGHT SOURCE	BEAM	COLOR QUALITY	CRI	COLOR TEMPERATURE	VOLTAGE
<b>WW</b>		<b>WW</b>		<b>90CRI</b>		
<b>WW</b> - Wall wash diffuser	<b>SW</b> - Static white  <b>SOLA</b> - Dim-to-warm single channel control	<b>WW</b> - Wall wash	<b>2STP</b> - 2 Step MacAdam Ellipse <b>3STP</b> - 3 Step MacAdam Ellipse  <b>3STP</b> - 3 Step MacAdam Ellipse	<b>90CRI</b> - 90+ CRI	<b>27K</b> - 2700K <b>30K</b> - 3000K <b>35K</b> - 3500K <b>40K</b> - 4000K  <b>SOLA</b> <sup>4</sup> - Dim-to-warm single channel control  <sup>4</sup> 3500K to 2200K	<b>120V</b> - 120V <b>277V</b> - 277V <b>UNV</b> - 120V-277V

WATTAGE	DIMMING	CANOPY TYPE <sup>9</sup>	CANOPY FINISH Specify NA for DMNC and DMRM	OPTION
				<b>JA8</b>
<b>10W</b> - 10 W output, up to 601 lm <b>14W</b> - 14 W output, up to 822 lm	<b>INTEGRAL</b> <b>DI</b> - 1% 0-10V <b>ELV</b> <sup>5</sup> - ELV 120V <b>TRI</b> <sup>5</sup> - TRIAC 120V  <sup>5</sup> Available with 120V only.	<b>REMOTE</b> <sup>6</sup> <b>RDI</b> - 1% 0-10V <b>RELV</b> <sup>7</sup> - ELV 120V <b>RTRI</b> <sup>7</sup> - TRIAC 120V <b>RLDEI</b> <sup>8</sup> - Lutron Hi-Lume 1% Eco  <sup>6</sup> A remote driver box is provided. <sup>7</sup> Available with 120V only. <sup>8</sup> On-site commissioning is required.	<b>FLR</b> <sup>10</sup> - Flat round canopy, 4" octagonal junction box <b>CDR</b> <sup>10</sup> - Conduit feed, round canopy <b>DMNC</b> <sup>11</sup> - Direct mount, new construction <b>DMRM</b> <sup>11,12</sup> - Direct mount, remodel  <sup>9</sup> See page 5 for details. <sup>10</sup> For 4" long cylinders, driver has to be in j-box when specified with integral drivers. See page 5 for details. <sup>11</sup> 4" long cylinders require a remote driver. <sup>12</sup> Single wiring entry only. No daisy chain connections allowed.	<b>FTMW</b> - Matte white <b>FTMB</b> - Matte black <b>FCHP</b> - Champagne <b>FDBZ</b> - Dark bronze <b>CF#</b> - Custom finish, specify RAL# <b>NA</b> - Not applicable  <b>JA8</b> - JA8 compliant
<b>12W</b> - 12 W output, up to 930 lm	<b>SDI</b> - Single 0-10V input <b>SELV</b> <sup>5</sup> - ELV 120V <b>STRI</b> <sup>5</sup> - TRIAC 120V	<b>RSDI</b> - Single 0-10V input <b>RSELV</b> <sup>7</sup> - ELV 120V <b>RSTRI</b> <sup>7</sup> - TRIAC 120V		



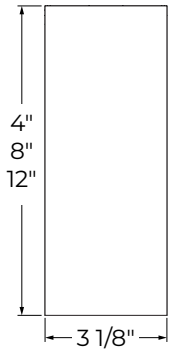
# AERA 3" CYLINDER

## SURFACE WALL WASH



### Dimensions

#### CYLINDER

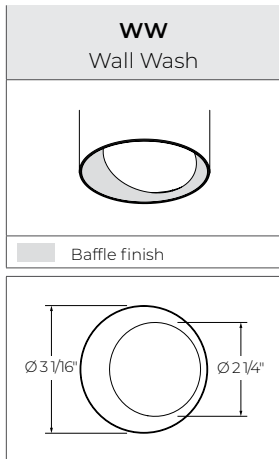


#### Minimum heights - Cylinder

Size	Integral driver in cylinder	Integral driver in J-box	Remote driver
Ø 3"	7"	4"	4"

\*Consult factory for maximum heights.

#### BAFFLE

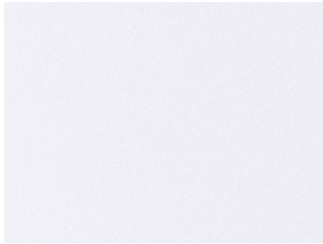


# AERA 3" CYLINDER

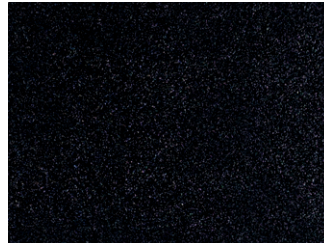
## SURFACE WALL WASH



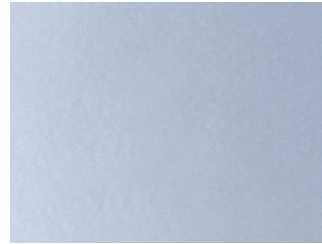
### Finishes



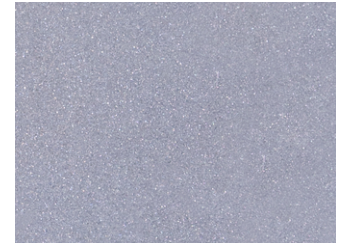
**FTMW** - Matte white



**FTMB** - Matte black



**FSPC** - Satin silver



**FSSPC** - Matte silver



**FCHP** - Champagne



**FDBZ** - Dark bronze

### Mounting

#### CANOPY

INTEGRAL DRIVER					REMOTE DRIVER				
Order code	<b>FLR</b> Flat round canopy, 4" octagonal junction box	<b>CDR</b> Conduit feed, round canopy	<b>DMNC</b> Direct mount, new construction	<b>DMRM *</b> Direct mount, remodel	<b>FLR</b> Flat round canopy, 4" octagonal junction box	<b>CDR</b> Conduit feed, round canopy	<b>DMNC</b> Direct mount, new construction	<b>DMRM *</b> Direct mount, remodel	
Canopy type									
Canopy size	Ø 4 1/2" Height 3/8"	Ø 5 1/2" Height 1 15/16"	NA		Ø 4 1/2" Height 3/8"	Ø 5 1/2" Height 1 15/16"	NA		
Min. height	4" (Driver in junction box) 8" (Driver in cylinder)		8"		4"				

\* Single wiring entry only. No daisy chain connections allowed.

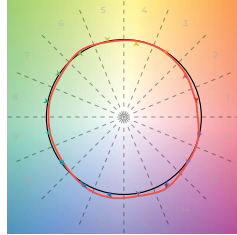
# AERA 3" CYLINDER

## SURFACE WALL WASH



### Color Quality

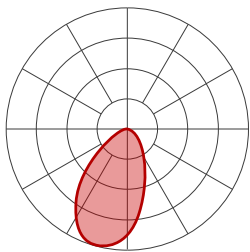
COLOR QUALITY - 3500K	
TM-30 R <sub>r</sub>	90
TM-30 R <sub>g</sub>	100
CRI	90+
R9	> 50



### Photometrics

#### WALL WASH

Values calculated based on 3500K and white wall wash baffle.



#### Delivered lumens (LM)

CRI	80+ CRI	90+ CRI	95+ CRI
BEAM	WW	WW	WW
10 W	601	562	433
14 W	822	768	591
20 W	1135	1061	817

#### Efficacy (LM/W)

CRI	80+ CRI	90+ CRI	95+ CRI
BEAM	WW	WW	WW
10 W	60	56	43
14 W	59	55	42
20 W	57	53	41

### MULTIPLIERS

Please follow the multiplier tables to ensure correct lumen value. CCT and baffle colors will change the lumen value.

CCT	
2200K	0.80
2400K	0.87
2700K	0.94
3000K	0.98
3500K	1
4000K	1.05
5000K	1.05

BAFFLE COLOR	
White	1
Black	1



# AERA 3" CYLINDER

## SURFACE WALL WASH

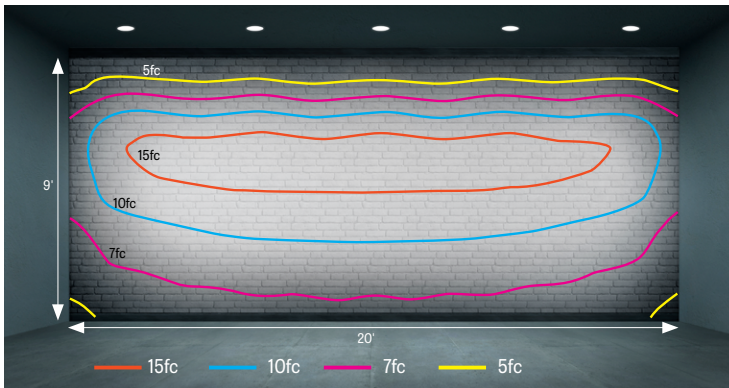


### Photometrics

#### UNIFORMITY

Values calculated based on 3500K and white wall wash baffle.

#### 24" from Wall - 36" Spacing



#### Foot-candles

		FC ON WALL			24" FROM WALL - 24" SPACING			24" FROM WALL - 36" SPACING			24" FROM WALL - 48" SPACING		
		80+ CRI	90+ CRI	95+ CRI	80+ CRI	90+ CRI	95+ CRI	80+ CRI	90+ CRI	95+ CRI	80+ CRI	90+ CRI	95+ CRI
ABOVE FINISHED FLOOR	9'	10	10	7	7	6	5	5	5	4	5	5	4
	8'	43	40	31	27	25	19	21	19	15	21	19	15
	7'	57	54	41	37	35	27	28	27	20	25	23	18
	6'	49	46	35	32	30	23	25	23	18	19	17	13
	5'	37	34	26	25	23	18	14	13	10	14	13	10
	4'	28	26	20	19	18	14	11	11	8	11	11	8
	3'	22	21	16	15	14	11	9	9	7	9	9	7
	2'	18	17	13	12	12	9	8	8	6	8	8	6
	1'	16	15	11	11	10	8						

# AERA 3" CYLINDER

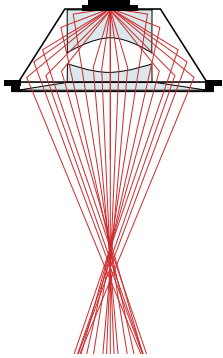
## SURFACE WALL WASH



### Technical Specifications

#### OPTIC

XPoint™ Refraction Technology optics provide precise optical control in a remarkably compact form. Micro optical paths from the chip on board converge and then disperse in precise beam angles, resulting in a crisp and exacting light quality.



#### LIGHT SOURCE

##### Static white

Compact COB (Chip-On-Board) LED module, available in 2200K, 2400K, 2700K, 3000K, 3500K, 4000K, and 5000K with a choice of 80+ CRI, 90+ CRI, or 95+ CRI, with elevated R9 value for 90+ CRI and above. Color consistency is maintained to within 2 SDCM. All LEDs have been tested in accordance with IESNA LM-80-08 and the results have shown L80 lumen maintenance greater than 60,000 hours. Absolute product photometry is measured and presented in accordance with IESNA LM-79, unless otherwise indicated.

##### Full spectrum static white

The full spectrum LED option offers improved color particularly in the cyan region that is beneficial in both healthcare and circadian lighting strategies. The cyan region in full spectrum LED is richer at the 480 nm range.

##### Chromawerx SOLA

Chromawerx SOLA is single-channel control that dims output while warming the color temperature in a pre-determined relationship. Two color temperature range options are offered: 3000K to 1800K, and 2700K to 1800K. A simple analog control adjusts a specially populated LED array to emulate the effect of dimming a filament source.

##### Chromawerx DUO

Chromawerx DUO offers a two-channel control system which uses analog or digital protocols for synchronous control of both cool to warm LED arrays - maintaining a CRI above 90. Two color temperature range options are offered: 6500K to 2700K, and 5000K to 2700K. The range of color DUO offers is useful for entraining circadian rhythms, stimulating alertness, and compensating for jet lag among other applications. The Chromawerx drivers are programmed to limit maximum light output and power usage across all color temperatures. When paired with DALI drivers (DDA/DDA8), color tuning follows a linear dimming curve.

#### ELECTRICAL

Unless otherwise specified, dimming down to 1%. At maximum driver load: efficiency >84%, PF >0.9, THD <20%. ELV and TRIAC dimming performance (including minimum dimming percentage) subject to dimmer selection.

**Integral:** 0-10V, ELV, TRIAC

**Remote:** 0-10V, ELV, TRIAC, Lutron Hi-Lume 1% EcoSystem, DALI, eldoLED 0.1% SOLOdrive 0-10V, eldoLED 1% ECOdrive 0-10V, DMX, Lutron DALI-2 digital

**Emergency battery option:** Remotely-installed, long-life, high-temperature, maintenance-free, Bodine Lithium-Ion battery pack with self-test functionality, test switch and charge indicator. IOTA and Fulham options available upon request. Minimum of 90 minutes operation, and recharge time of 24 hours. For fixtures less than 10 W, the battery provides 6 W of emergency light output. For fixtures 10 W and over, the battery provides 10 W.

#### PoE

Depending on the PoE manufacturer selected, Lumenwerx will install the node in factory as either integral to the luminaire or as a remote module. Factory programming of the PoE node may or may not enable the following functionalities: lumen package, DUO (tunable white), QUADRO (RGBW), emergency battery backup, and sensor integration. These must be addressed and evaluated on a case-by-case basis.

#### CONSTRUCTION

**Housing:** Die-cast and extruded aluminum

**Canopy:** Flat, conduit feed, and direct

**Finish:** Matte white, matte black, champagne, and dark bronze.

Custom colors also available (provide RAL #). Satin silver and matte silver finishes are also available for Baffle.

**Heat sink:** Die-cast aluminum

**Baffle:** Die-cast aluminum

**Baffle style:** Wall Wash

# AERA 3" CYLINDER

## SURFACE WALL WASH



### WEIGHT

**4"**: 1.4 lbs - 0.6 kg

**8"**: 2 lbs - 0.9 kg

**12"**: 2.4 lbs - 1.1 kg

### ENVIRONMENT

Ambient temperature at fixture location shall be within 0°C/32°F - 25°C/77°F, indoor dry or damp as well as outdoor damp use (canopies or marquees).

### CERTIFICATIONS

**ETL**: Rated for indoor dry/damp locations. Conforms to UL Standard 1598 and certified to CAN/CSA Standard C22.2 No. 250.0.

**Title 24 JA8**: California Building Standards Code

**Declare**: [LBC Red List Approved](#)

### WARRANTY

Lumenwerx provides a five-year limited warranty on electrical and mechanical performance of the luminaires, including the LED boards, drivers, and auxiliary electronics. Lumenwerx will repair or replace defective luminaires or components at our discretion, provided they have been installed and operated in accordance with our specifications. Other limitations apply, please refer to the full warranty on our website.