

AERA 3" CYLINDER

WALL, WALL ASYMMETRIC
DIRECT/INDIRECT, DIRECT, INDIRECT



Declare.

8" Height
Bevel



8" Height
Decorative Bevel

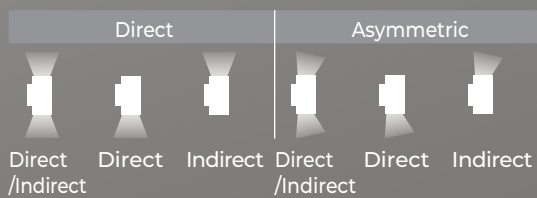


12" Height
Pinhole



True-to-size with a versatile minimalist aesthetic, Aera Cylinder luminaires are high-performance fixtures, delivering visually comfortable lighting suitable for a wide range of applications.

Distributions



Mounting Options



Beam Angles



Low UGR < 10 in 10°, 15°, 25°, 35°, and 50° beams

Performance

LUMEN OUTPUT ¹	WATTS	EFFICACY
1132 lm	10 W	113 lm/W
1545 lm	14 W	110 lm/W
2135 lm	20 W	107 lm/W

¹Lumen packages are assuming 3500K, 80+ CRI, 35° beam, bevel baffle, SDL lens option.

Light Source

Static White
Full Spectrum Static White
SOLA - Dim-to-Warm
DUO - Tunable White



COB

2 Step Color Binning
Up to 95+ CRI

Drivers / Protocols

1%, 0.1% Dimming Available
0-10V, TRIAC, ELV, Lutron EcoSystem, DALI, DMX
Emergency Battery (optional)



Smart / Wireless Compatible

Aera Family (Refer to other spec sheets)

Downlight



2" / 3" / 4"
Round / Square
Recessed Adjustable



2" / 3" / 4"
Round / Square
Recessed



2" / 3" / 4"
Round / Square
Recessed Wall Wash

Multi-aperture



2" / 3" / 4"
Round / Square
Recessed Adjustable



2" / 3" / 4"
Round / Square
Recessed



2" / 3" / 4"
Round / Square
Recessed Wall Wash

Cylinder



2" / 3" / 4" / 5" / 6"
4" Seal
Pendant
Pendant Asymmetric
Pendant Wall Wash



2" / 3" / 4" / 5" / 6"
4" Seal
Wall
Wall Asymmetric



2" / 3" / 4" / 5" / 6"
4" Seal
Surface
Surface Asymmetric
Surface Wall Wash

www.lumenwerx.com
T (514) 225-4304

© Lumenwerx, ULC. All rights reserved.



Lumenwerx reserves the right to modify product specifications without notification.
AERA3-CYLINDER-WALL-SPEC-REV8 January 12, 2026

AERA 3" CYLINDER

WALL, WALL ASYMMETRIC
DIRECT/INDIRECT, DIRECT, INDIRECT



Project: _____

Type: _____



To specify a Title 24 JA8 compliant fixture, see page 3.

Order Guide

LUMINAIRE ID	DISTRIBUTION	CYLINDER HEIGHT ¹	CYLINDER FINISH	BAFFLE STYLE	BAFFLE FINISH	LENS * See page 4 for details
AE3CYW - Aera 3" Cylinder Wall AE3CYWASY - Aera 3" Cylinder Wall Asymmetric	DI - Direct/Indirect D - Direct I - Indirect	DIRECT/INDIRECT 6IN ² - 6" 8IN ² - 8" 12IN ³ - 12" 14IN - 14" ¹ For minimum heights, see dimensions on page 4. ² Available with remote driver only. ³ Available with remote driver only when specified with Wall Asymmetric.	DIRECT OR INDIRECT 6IN ³ - 6" 8IN - 8" 12IN - 12" 14IN - 14"	FTMW - Matte white FTMB - Matte black FCHP - Champagne FDBZ - Dark bronze CF# - Custom finish, specify RAL#	BVL - Bevel PHL - Pinhole BVLD - Decorative bevel	FTMW - Matte white FTMB - Matte black FSPC - Satin silver FSSPC - Matte silver FCHP - Champagne FDBZ - Dark bronze CF# - Custom finish, specify RAL# At baffle (choose 1 option) Specify NOL for Pinhole SDL - Soft diffused lens, Solite FDL - Frosted diffused lens CL - Clear lens NOL - No lens

LIGHT SOURCE	DIRECT BEAM Specify NA for Indirect	INDIRECT BEAM Specify NA for Direct	COLOR QUALITY	CRI	COLOR TEMPERATURE	ACCESSORIES * See page 4 for details	VOLTAGE	
SW - Static white FS - Full spectrum static white	10DEG - 10° Very narrow spot 15DEG - 15° Narrow spot 25DEG - 25° Spot 35DEG - 35° Narrow flood 50DEG - 50° Wide flood 80DEG ⁴ - 80° Very wide flood 90DEG ⁴ - 90° Open flood NA - Not applicable	25DEG - 25° Spot 35DEG - 35° Narrow flood 60DEG - 60° Wide flood 80DEG ⁴ - 80° Very wide flood 90DEG ⁴ - 90° Open flood NA - Not applicable	25STP ⁵ - 2 Step MacAdam Ellipse 35STP - 3 Step MacAdam Ellipse ⁵ Not available with full spectrum.	80CRI ⁶ - 80+ CRI 90CRI ⁶ - 90+ CRI 95CRI - 95+ CRI ⁶ Not available with full spectrum.	22K ⁷ - 2200K 24K ⁸ - 2400K 27K - 2700K 30K - 3000K ⁷ Only available with 90+ CRI. ⁸ Not available with 95+ CRI.	35K - 3500K 40K - 4000K 50K ⁸ - 5000K SOLA 30K18K - 3000K to 1800K 27K18K - 2700K to 1800K DUO 65K27K - 6500K to 2700K 50K27K - 5000K to 2700K	At light element ^{9,10} (choose up to 2 options for SW/FS and 1 option for SOLA/DUO) LSDL - Soft diffused lens, Solite LFDL - Frosted diffused lens LS - Linear spread HEX ¹¹ - Hex louver NA - None ⁹ Separate codes with a "*" if more than one is specified, e.g. LSDL+LS. ¹⁰ LSDL and LFDL cannot be combined. LS and HEX cannot be combined. ¹¹ Not available with 80°/90° beam options.	120V - 120V 277V - 277V UNV - 120V-277V 347V ¹² - 347V ¹² Available with RDI driver only. Please consult factory.

* LSDL or LFDL at light element cannot be combined with SDL, FDL, or CL at baffle.

DIRECT WATTAGE ¹³ Specify NA for Indirect	INDIRECT WATTAGE ¹⁵ Specify NA for Direct	DIMMING ¹⁷
WALL 10W - 10 W output, up to 1132 lm 14W - 14 W output, up to 1545 lm 20W ¹⁴ - 20 W output, up to 2135 lm NA - Not applicable	WALL ASY. 10W - 10 W output, up to 1029 lm 14W - 14 W output, up to 1406 lm 20W ¹⁴ - 20 W output, up to 1942 lm NA - Not applicable	INTEGRAL DI - 1% 0-10V ELV ¹⁸ - ELV 120V TRI ¹⁸ - TRIAC 120V REMOTE ¹⁹ RDI - 1% 0-10V RELV ¹⁸ - ELV 120V RTRI ¹⁸ - TRIAC 120V RLED1 ²⁰ - Lutron Hi-lume 1% Eco RDA ²⁰ - DALI RELD1 - eldoLED 1% ECODrive 0-10V RELD0 - eldoLED 0.1% SOLOdrive 0-10V +EB ²¹ - Emergency battery

¹³Lumen outputs are reduced with full spectrum, consult factory.
¹⁴Not available for a Direct/Indirect fixture.

¹⁵Lumen outputs are reduced with full spectrum, consult factory.
¹⁶Not available for a Direct/Indirect fixture.

¹⁷PoE (Power-over-Ethernet) compatible. Consult factory for details.
¹⁸Available with 120V only.
¹⁹A remote driver box is provided.
²⁰On-site commissioning is required.
²¹To specify, add +EB to the selected dimming option, e.g. RDI+EB.

SOLA	SOLA	SOLA	SOLA	SOLA	SDI	RSDI	DUO
14W - 14 W output, up to 950 lm 18W ¹⁴ - 18 W output, up to 1205 lm	14W - 14 W output, up to 865 lm 18W ¹⁴ - 18 W output, up to 1100 lm	14W - 14 W output, up to 950 lm 18W ¹⁶ - 18 W output, up to 1205 lm	14W - 14 W output, up to 865 lm 18W ¹⁶ - 18 W output, up to 1100 lm	14W - 14 W output, up to 865 lm 18W ¹⁶ - 18 W output, up to 1100 lm	0-10V input SELV ¹⁸ - ELV 120V STRI ¹⁸ - TRIAC 120V	0-10V input RSELV ¹⁸ - ELV 120V RSTRI ¹⁸ - TRIAC 120V	DMX RDDA ²⁰ - DALI DT6 RDDA8 ²⁰ - DALI DT8 RDD1 - Dual 0-10V input for CCT/intensity RLD2 ²⁰ - Lutron DALI-2 digital +EB ²¹ - Emergency battery
10W - 10 W output, up to 715 lm 14W - 14 W output, up to 1005 lm 19W ¹⁴ - 19 W output, up to 1355 lm	10W - 10 W output, up to 650 lm 14W - 14 W output, up to 915 lm 19W ¹⁴ - 19 W output, up to 1235 lm	10W - 10 W output, up to 715 lm 14W - 14 W output, up to 1005 lm 19W ¹⁶ - 19 W output, up to 1355 lm	10W - 10 W output, up to 650 lm 14W - 14 W output, up to 915 lm 19W ¹⁶ - 19 W output, up to 1235 lm	10W - 10 W output, up to 650 lm 14W - 14 W output, up to 915 lm 19W ¹⁶ - 19 W output, up to 1235 lm			

ELECTRICAL	CANOPY TYPE	CANOPY FINISH Specify NA for DM	OPTION ²³
1C - 1 circuit 2C ²² - 2 circuits ²² Available with Direct/Indirect and remote driver only.	FLS - Flat square canopy, 4" octagonal junction box DM - Direct mount	FTMW - Matte white FTMB - Matte black FCHP - Champagne FDBZ - Dark bronze	NA - None ²³ To specify a JA8 compliant fixture, see page 3.

www.lumenwerx.com
T (514) 225-4304



Lumenwerx reserves the right to modify product specifications without notification.
AERA3-CYLINDER-WALL-SPEC-REV8 January 12, 2026

AERA 3" CYLINDER

WALL, WALL ASYMMETRIC
 DIRECT/INDIRECT, DIRECT, INDIRECT
 Title 24 JA8



Project: _____

 Type: _____



Order Guide

LUMINAIRE ID	DISTRIBUTION	CYLINDER HEIGHT ¹	CYLINDER FINISH	BAFFLE STYLE	BAFFLE FINISH
AE3CYW - Aera 3" Cylinder Wall AE3CYWASY - Aera 3" Cylinder Wall Asymmetric	D - Direct I - Indirect	6IN ² - 6" 8IN - 8" 12IN - 12" 14IN - 14" ¹ For minimum heights, see dimensions on page 4. ² Available with remote driver only when specified with Wall Asymmetric.	FTMW - Matte white FTMB - Matte black FCHP - Champagne FDBZ - Dark bronze CF# - Custom finish, specify RAL#	BVL - Bevel PHL - Pinhole BVLD - Decorative bevel	FTMW - Matte white FTMB - Matte black FSPC - Satin silver FSSPC - Matte silver FCHP - Champagne FDBZ - Dark bronze CF# - Custom finish, specify RAL#

LENS * See page 4 for details	LIGHT SOURCE	DIRECT BEAM Specify NA for Indirect	INDIRECT BEAM Specify NA for Direct	COLOR QUALITY	CRI	COLOR TEMP.	ACCESSORY * See page 4 for details
At baffle Specify NOL for Pinhole	SW - Static white	15DEG - 15° Narrow spot 25DEG - 25° Spot 35DEG - 35° Narrow flood 50DEG - 50° Wide flood 80DEG ³ - 80° Very wide flood 90DEG ³ - 90° Open flood NA - Not applicable ³ Not available with Asymmetric.	15DEG - 15° Narrow spot 25DEG - 25° Spot 35DEG - 35° Narrow flood 50DEG - 50° Wide flood 80DEG ⁴ - 80° Very wide flood 90DEG ⁴ - 90° Open flood NA - Not applicable ⁴ Not available with Asymmetric.	2STP - 2 Step MacAdam Ellipse 3STP - 3 Step MacAdam Ellipse	90CRI - 90+ CRI	27K - 2700K 30K - 3000K 35K - 3500K 40K - 4000K	At light element LSDL - Soft diffused lens, Solite LFDL - Frosted diffused lens NA - None
SDL - Soft diffused lens, Solite FDL - Frosted diffused lens CL - Clear lens NOL - No lens		SOLA - Dim-to-warm single channel control	50DEG - 50° Wide flood NA - Not applicable	50DEG - 50° Wide flood NA - Not applicable			

* LSDL or LFDL at light element cannot be combined with SDL, FDL, or CL at baffle. For SOLA, one of the following lenses must be specified: SDL, FDL, LSDL, or LFDL.

VOLTAGE	DIRECT WATTAGE Specify NA for Indirect		INDIRECT WATTAGE Specify NA for Direct		DIMMING
120V - 120V 277V - 277V UNV - 120V-277V	WALL	WALL ASY.	WALL	WALL ASY.	INTEGRAL D1 - 1% 0-10V ELV ⁶ - ELV 120V TRI ⁶ - TRIAC 120V ⁶ Available with 120V only.
	10W - 10 W output, up to 1132 lm 14W - 14 W output, up to 1545 lm	10W - 10 W output, up to 1029 lm 14W - 14 W output, up to 1406 lm	10W - 10 W output, up to 1132 lm 14W - 14 W output, up to 1545 lm	10W - 10 W output, up to 1029 lm 14W - 14 W output, up to 1406 lm	
	NA - Not applicable		NA - Not applicable		REMOTE ⁷ RD1 - 1% 0-10V RELV ⁸ - ELV 120V RTRI ⁸ - TRIAC 120V RLDE1 ⁹ - Lutron HI-Lume 1% Eco ⁷ A remote driver box is provided. ⁸ Available with 120V only. ⁹ On-site commissioning is required.
	12W - 12 W output, up to 725 lm	12W - 12 W output, up to 625 lm	12W - 12 W output, up to 725 lm	12W - 12 W output, up to 625 lm	

ELECTRICAL	CANOPY TYPE	CANOPY FINISH Specify NA for DM	OPTION
1C			JA8
1C - 1 circuit	FLS - Flat square canopy, 4" octagonal junction box DM - Direct mount	FTMW - Matte white FTMB - Matte black FCHP - Champagne FDBZ - Dark bronze CF# - Custom finish, specify RAL# NA - Not applicable	JA8 - JA8 compliant



AERA 3" CYLINDER

WALL, WALL ASYMMETRIC

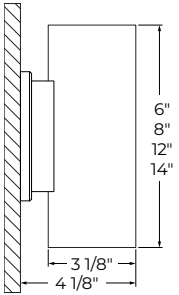
DIRECT/INDIRECT, DIRECT, INDIRECT



Dimensions

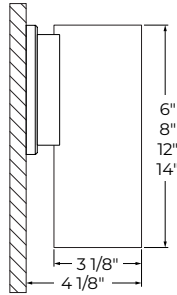
CYLINDER

Direct/Indirect¹



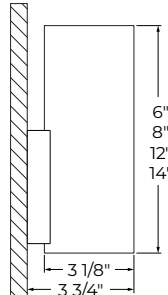
Flat square canopy²

Direct¹



Flat square canopy²

Indirect¹

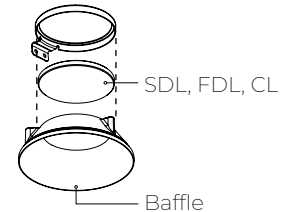
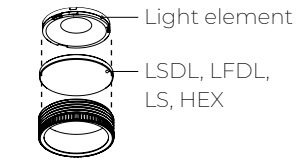


Direct mount²

¹Certain restrictions apply. See page 2 for the height options available with integral and remote.

²Flat square canopy and direct mount options are available with all Direct/Indirect, Direct and Indirect.

Lens and Accessories

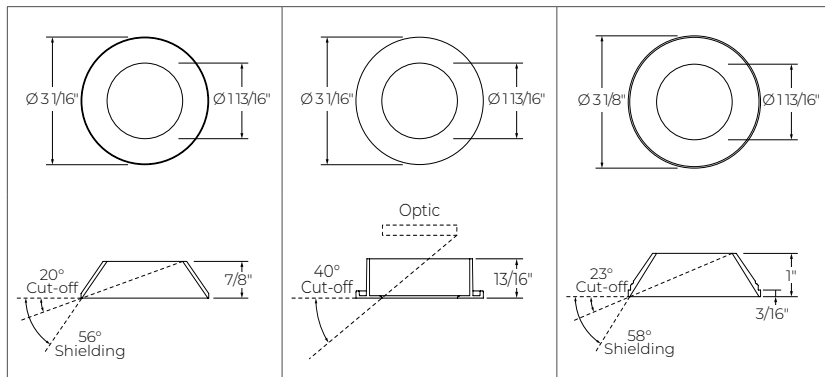
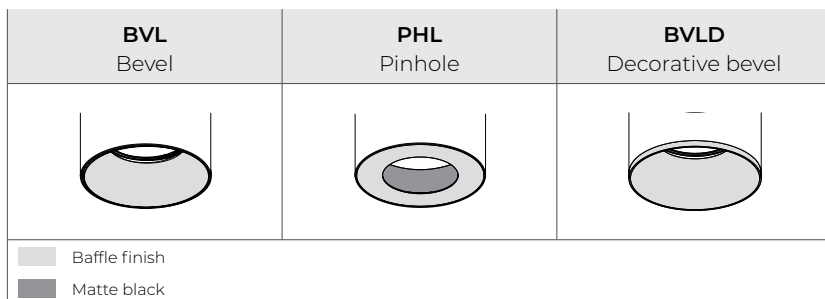


Minimum heights - Cylinder

Size	Distribution	Direct		Asymmetric	
		Integral driver	Remote driver	Integral driver	Remote driver
Ø 3"	Direct/Indirect	12"	6"	14"	8"
	Direct or Indirect	6"	6"	8"	6"

¹Consult factory for maximum heights.

BAFFLE

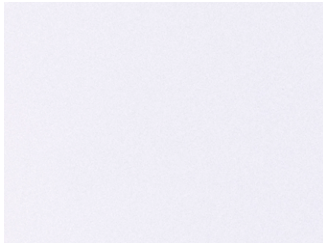


AERA 3" CYLINDER

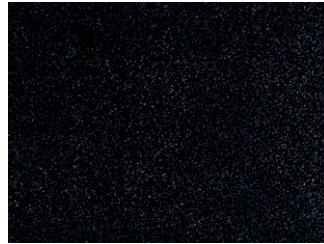
WALL, WALL ASYMMETRIC
DIRECT/INDIRECT, DIRECT, INDIRECT



Finishes



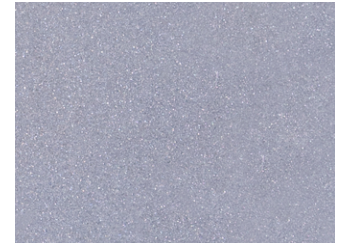
FTMW - Matte white



FTMB - Matte black



FSPC - Satin silver



FSSPC - Matte silver

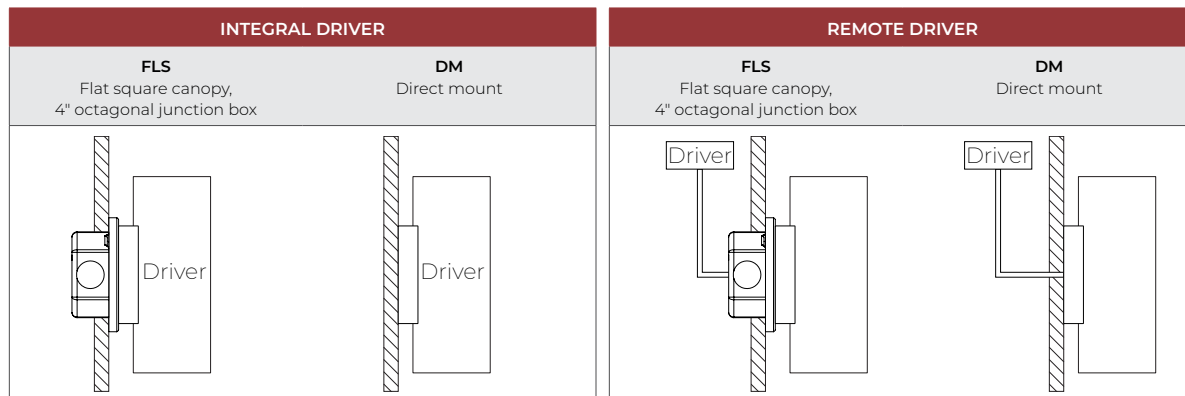


FCHP - Champagne



FDBZ - Dark bronze

Mounting



AERA 3" CYLINDER

WALL, WALL ASYMMETRIC

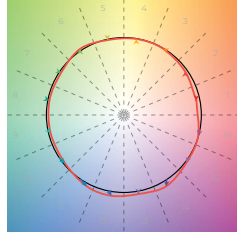
DIRECT/INDIRECT, DIRECT, INDIRECT



Color Quality

COLOR QUALITY - 3500K

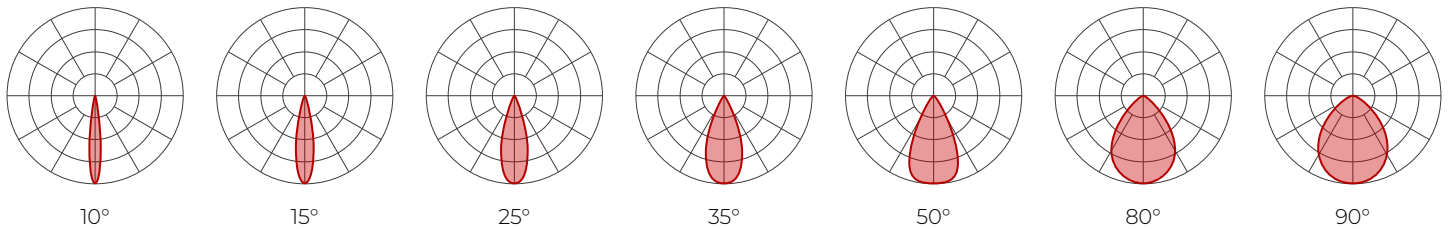
TM-30 R _r	90
TM-30 R _g	100
CRI	90+
R9	> 50



Photometrics

WALL

Values calculated based on 3500K, bevel baffle, and SDL lens option.



Delivered lumens (LM)

BEAM	80+ CRI							90+ CRI							95+ CRI						
	10°	15°	25°	35°	50°	80°	90°	10°	15°	25°	35°	50°	80°	90°	10°	15°	25°	35°	50°	80°	90°
10 W	950	1056	1127	1132	1003	902	902	888	987	1053	1058	937	843	843	684	760	811	815	721	649	649
14 W	1297	1441	1539	1545	1370	1233	1233	1212	1347	1438	1444	1280	1152	1152	933	1037	1107	1112	986	887	887
20 W	1792	1991	2125	2135	1892	1703	1703	1675	1861	1986	1995	1768	1591	1591	1290	1433	1529	1536	1361	1225	1225

Efficacy (LM/W)

BEAM	80+ CRI							90+ CRI							95+ CRI						
	10°	15°	25°	35°	50°	80°	90°	10°	15°	25°	35°	50°	80°	90°	10°	15°	25°	35°	50°	80°	90°
10 W	95	106	113	113	100	90	90	89	99	105	106	94	84	84	68	76	81	81	72	65	65
14 W	93	103	110	110	98	88	88	87	96	103	103	91	82	82	67	74	79	79	70	63	63
20 W	90	100	106	107	95	85	85	84	93	99	100	88	80	80	64	72	76	77	68	61	61

MULTIPLIERS

Please follow the multiplier tables to ensure correct lumen value. Beams, CCT, baffle styles, baffle colors, lensing and accessories will change the lumen value.

CCT	BAFFLE STYLE AND COLOR			LENS * (At baffle)		ACCESSORIES * (At light element)		
2200K	0.80	Bevel	White	1	SDL - Soft diffused lens, Solite	1	LSDL - Soft diffused lens, Solite	1
2400K	0.87		Black	1		FDL - Frosted lens		0.8
2700K	0.94	Pinhole	White	0.92	CL - Clear lens		1.1	LS - Linear spread
3000K	0.98		Black	0.92		NOL - No lens	1.1	
3500K	1	Decorative bevel	White	1	* When more than one lens or accessory is specified, multiply together the value of each lens and/or accessory. e.g. NOL + LSDL + LS = 1.1 x 1 x 0.84 = 0.924			
4000K	1.05		Black	1				
5000K	1.05							

DIRECT/INDIRECT - LPW CALCULATION

For Direct/Indirect performance values, follow the formula.

$$\left(\frac{\text{DIRECT LM} + \text{INDIRECT LM}}{\text{DIRECT W} + \text{INDIRECT W}} \right) = \text{LPW}$$

For SOLA and DUO, please consult factory.

www.lumenwerx.com
T (514) 225-4304

© Lumenwerx, ULC. All rights reserved.



Lumenwerx reserves the right to modify product specifications without notification.
AERA3-CYLINDER-WALL-SPEC-REV8 January 12, 2026

AERA 3" CYLINDER

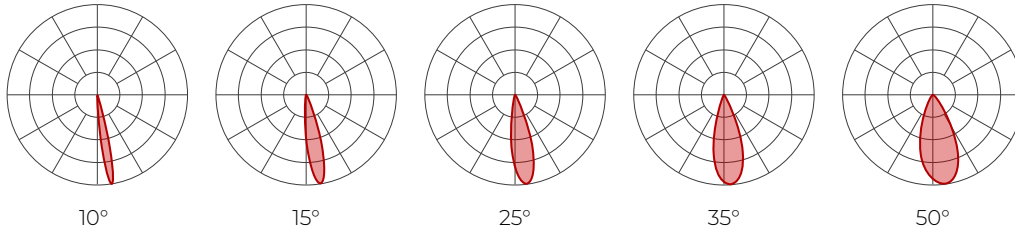


WALL, WALL ASYMMETRIC
DIRECT/INDIRECT, DIRECT, INDIRECT

Photometrics

WALL ASYMMETRIC

Values calculated based on 3500K, bevel baffle, and SDL lens option.



Delivered lumens (LM)

BEAM	80+ CRI					90+ CRI					95+ CRI				
	10°	15°	25°	35°	50°	10°	15°	25°	35°	50°	10°	15°	25°	35°	50°
10 W	823	914	1029	1018	937	770	855	962	952	876	592	658	741	733	675
14 W	1124	1249	1406	1391	1280	1050	1167	1314	1300	1197	809	899	1012	1001	921
20 W	1553	1725	1942	1921	1768	1451	1612	1815	1795	1653	1117	1241	1397	1382	1272

Efficacy (LM/W)

BEAM	80+ CRI					90+ CRI					95+ CRI				
	10°	15°	25°	35°	50°	10°	15°	25°	35°	50°	10°	15°	25°	35°	50°
10 W	82	91	103	102	94	77	85	96	95	88	59	66	74	73	67
14 W	80	89	100	99	91	75	83	94	93	85	58	64	72	71	66
20 W	78	86	97	96	88	73	81	91	90	83	56	62	70	69	64

MULTIPLIERS

Please follow the multiplier tables to ensure correct lumen value. Beams, CCT, baffle styles, baffle colors, lensing and accessories will change the lumen value.

CCT		BAFFLE STYLE AND COLOR			LENS * (At baffle)		ACCESSORIES * (At light element)	
2200K	0.80	Bevel	White	1	SDL - Soft diffused lens, Solite	1	LSDL - Soft diffused lens, Solite	1
2400K	0.87		Black	1	FDL - Frosted lens	0.8	LFDL - Frosted lens	0.8
2700K	0.94	Pinhole	White	0.92	CL - Clear lens	1.1	LS - Linear spread	0.84
3000K	0.98		Black	0.92	NOL - No lens	1.1	HEX - Hex louver	0.86
3500K	1	Decorative bevel	White	1	* When more than one lens or accessory is specified, multiply together the value of each lens and/or accessory. e.g. NOL + LSDL + LS = 1.1 x 1 x 0.84 = 0.924			
4000K	1.05		Black	1				
5000K	1.05							

For SOLA and DUO, please consult factory.

DIRECT/INDIRECT - LPW CALCULATION

For Direct/Indirect performance values, follow the formula.

$$\frac{\left(\frac{\text{DIRECT LM}}{\text{DIRECT W}} + \frac{\text{INDIRECT LM}}{\text{INDIRECT W}} \right)}{\left(\frac{\text{DIRECT LM}}{\text{DIRECT W}} + \frac{\text{INDIRECT LM}}{\text{INDIRECT W}} \right)} = \text{LPW}$$

AERA 3" CYLINDER

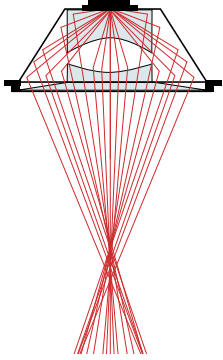
WALL, WALL ASYMMETRIC
DIRECT/INDIRECT, DIRECT, INDIRECT



Technical Specifications

OPTIC

XPoint™ Refraction Technology optics provide precise optical control in a remarkably compact form. Micro optical paths from the chip on board converge and then disperse in precise beam angles, resulting in a crisp and exacting light quality.



LIGHT SOURCE

Static white

Compact COB (Chip-On-Board) LED module, available in 2200K, 2400K, 2700K, 3000K, 3500K, 4000K, and 5000K with a choice of 80+ CRI, 90+ CRI, or 95+ CRI, with elevated R9 value for 90+ CRI and above. Color consistency is maintained to within 2 SDCM. All LEDs have been tested in accordance with IESNA LM-80-08 and the results have shown L80 lumen maintenance greater than 60,000 hours. Absolute product photometry is measured and presented in accordance with IESNA LM-79, unless otherwise indicated.

Full spectrum static white

The full spectrum LED option offers improved color particularly in the cyan region that is beneficial in both healthcare and circadian lighting strategies. The cyan region in full spectrum LED is richer at the 480 nm range.

Chromawerx SOLA

Chromawerx SOLA is single-channel control that dims output while warming the color temperature in a pre-determined relationship. Two color temperature range options are offered: 3000K to 1800K, and 2700K to 1800K. A simple analog control adjusts a specially populated LED array to emulate the effect of dimming a filament source.

Chromawerx DUO

Chromawerx DUO offers a two-channel control system which uses analog or digital protocols for synchronous control of both cool to warm LED arrays - maintaining a CRI above 90. Two color temperature range options are offered: 6500K to 2700K, and 5000K to 2700K. The range of color DUO offers is useful for entraining circadian rhythms, stimulating alertness, and compensating for jet lag among other applications. The Chromawerx drivers are programmed to limit maximum light output and power usage across all color temperatures. When paired with DALI drivers (DDA/DDA8), color tuning follows a linear dimming curve.

ELECTRICAL

Unless otherwise specified, dimming down to 1%. At maximum driver load: efficiency > 84%, PF > 0.9, THD < 20%. ELV and TRIAC dimming performance (including minimum dimming percentage) subject to dimmer selection.

Integral: 0-10V, ELV, TRIAC

Remote: 0-10V, ELV, TRIAC, Lutron Hi-Lume 1% EcoSystem, DALI, eldoLED 0.1% SOLOdrive 0-10V, eldoLED 1% ECOdrive 0-10V, DMX, Lutron DALI-2 digital

Emergency battery option: Remotely-installed, long-life, high-temperature, maintenance-free, Bodine Lithium-Ion battery pack with self-test functionality, test switch and charge indicator. IOTA and Fulham options available upon request. Minimum of 90 minutes operation, and recharge time of 24 hours. For fixtures less than 10 W, the battery provides 6 W of emergency light output. For fixtures 10 W and over, the battery provides 10 W.

PoE

Depending on the PoE manufacturer selected, Lumenwerx will install the node in factory as either integral to the luminaire or as a remote module. Factory programming of the PoE node may or may not enable the following functionalities: lumen package, DUO (tunable white), QUADRO (RGBW), emergency battery backup, and sensor integration. These must be addressed and evaluated on a case-by-case basis.

CONSTRUCTION

Housing: Extruded aluminum

Canopy: Flat and direct

Arm: Machined aluminum

Finish: Matte white, matte black, champagne, and dark bronze. Custom colors also available (provide RAL #). Satin silver and matte silver finishes are also available for Baffle.

Heat sink: Die-cast aluminum

Baffle: Die-cast aluminum

Baffle style: Bevel, pinhole, and decorative bevel

AERA 3" CYLINDER

WALL, WALL ASYMMETRIC

DIRECT/INDIRECT, DIRECT, INDIRECT



WEIGHT

Direct/Indirect	Direct or Indirect
6" : 1.8 lbs - 0.8 kg	6" : 1.6 lbs - 0.7 kg
12" : 3 lbs - 1.4 kg	8" : 2 lbs - 0.9 kg
	12" : 2.4 lbs - 1.1 kg

LENS AND ACCESSORIES



Soft diffused lens, Solite



Frosted diffused lens



Clear lens



Linear spread



Hex louver

ENVIRONMENT

Ambient temperature at fixture location shall be within 0°C/32°F - 25°C/77°F, indoor dry or damp as well as outdoor damp use (canopies or marquees).

CERTIFICATIONS

ETL: Rated for indoor dry/damp locations. Conforms to UL Standard 1598 and certified to CAN/CSA Standard C22.2 No. 250.0.

Title 24 JA8: California Building Standards Code

Declare: [LBC Red List Approved](#)

WARRANTY

Lumenwerx provides a five-year limited warranty on electrical and mechanical performance of the luminaires, including the LED boards, drivers, and auxiliary electronics. Lumenwerx will repair or replace defective luminaires or components at our discretion, provided they have been installed and operated in accordance with our specifications. Other limitations apply, please refer to the full warranty on our website.