

AERA 4" CYLINDER

PENDANT WALL WASH
DIRECT/INDIRECT, DIRECT



Declare.



4" Height



8" Height



12" Height

Beam Angles




Low UGR < 10

Wall Wash 80°-Up

Performance

LUMEN OUTPUT ¹	WATTS	EFFICACY
763 lm	14 W	54 lm/W
1216 lm	20 W	61 lm/W
1632 lm	28 W	58 lm/W

¹ Lumen packages are assuming 3500K, 80+ CRI.

Light Source

Static White
Full Spectrum Static White
SOLA - Dim-to-Warm
DUO - Tunable White



COB

2 Step Color Binning
Up to 95+ CRI

Drivers / Protocols

1%, 0.1% Dimming Available
0-10V, TRIAC, ELV, Lutron EcoSystem, DALI, DMX
Emergency Battery (optional)



Smart / Wireless Compatible

Mounting Options



Flat Stem Swivel Stem



Conduit Stem Swivel Stem












Direct Stem



Deep Stem

True-to-size with a versatile minimalist esthetic, Aera Cylinder luminaires are high-performance fixtures, delivering visually comfortable lighting suitable for a wide range of applications.

Aera Family (Refer to other spec sheets)

Downlight			Multi-aperture			Cylinder		
								
2" / 3" / 4" Round / Square Recessed Adjustable	2" / 3" / 4" Round / Square Recessed	2" / 3" / 4" Round / Square Recessed Wall Wash	2" / 3" / 4" Round / Square Recessed Adjustable	2" / 3" / 4" Round / Square Recessed	2" / 3" / 4" Round / Square Recessed Wall Wash	2" / 3" / 4" / 5" / 6" 4" Seal Pendant Pendant Asymmetric Pendant Wall Wash	2" / 3" / 4" / 5" / 6" 4" Seal Wall Wall Asymmetric	2" / 3" / 4" / 5" / 6" 4" Seal Surface Surface Asymmetric Surface Wall Wash



AERA 4" CYLINDER

PENDANT WALL WASH
DIRECT/INDIRECT, DIRECT



Project: _____

Type: _____



For a Title 24 JA8 compliant fixture, see page 3.

Order Guide

LUMINAIRE ID ¹	DISTRIBUTION	CYLINDER HEIGHT		CYLINDER FINISH	BAFFLE STYLE	BAFFLE FINISH	LENS
AE4CYPWW					WW		WW
AE4CYPWW - Aera 4" Cylinder Pendant Wall Wash ¹ Pendant (direct) and Pendant Asymmetric also available. Consult other spec sheet.	DI - Direct/Indirect D - Direct	DIRECT/INDIRECT ² 8IN - 8" 12IN - 12"	DIRECT 4IN ³ - 4" 8IN - 8" 12IN - 12"	FTMW - Matte white FTMB - Matte black FCHP - Champagne FDBZ - Dark bronze CF# - Custom finish, specify RAL#	WW - Wall wash	FTMW - Matte white FTMB - Matte black FSPC - Satin silver FSSPC - Matte silver FCHP - Champagne FDBZ - Dark bronze CF# - Custom finish, specify RAL#	WW - Wall wash diffuser
		CH#IN ⁴ - Custom height ² Only available with DR canopy option when specified with integral drivers. ³ Not available with DMNC/DMRM canopy options when specified with integral drivers. ⁴ Specify height (#) in 1" increments only. Up to maximum 36". For minimum heights, see page 4.					

LIGHT SOURCE	DIRECT BEAM	COLOR QUALITY	CRI	COLOR TEMPERATURE		VOLTAGE	DIRECT WATTAGE ¹⁰
	WW						
SW - Static white FS - Full spectrum static white	WW - Wall wash	2STP ⁵ - 2 Step MacAdam Ellipse 3STP - 3 Step MacAdam Ellipse ⁵ Not available with full spectrum.	80CRI ⁶ - 80+ CRI 90CRI ⁶ - 90+ CRI 95CRI - 95+ CRI ⁶ Not available with full spectrum.	22K ⁷ - 2200K 24K ⁸ - 2400K 27K - 2700K 30K - 3000K	35K - 3500K 40K - 4000K 50K ⁸ - 5000K	120V - 120V 277V - 277V UNV - 120V-277V 347V ⁹ - 347V ⁹ Available with RD1 driver only. Please consult factory.	14W - 14 W output, up to 763 lm 20W - 20 W output, up to 1216 lm 28W ¹¹ - 28 W output, up to 1632 lm ¹⁰ Lumen outputs are reduced with full spectrum, consult factory. ¹¹ Not available for a Direct/Indirect fixture.
SOLA - Dim-to-warm single channel control DUO - Tunable white 2-channel control		3STP - 3 Step MacAdam Ellipse	90CRI - 90+ CRI	SOLA 30K18K - 3000K to 1800K 27K18K - 2700K to 1800K DUO 65K27K - 6500K to 2700K 50K27K - 5000K to 2700K			SOLA 18W - 18 W output, up to 965 lm 28W ¹¹ - 28 W output, up to 1615 lm DUO 14W - 14 W output, up to 805 lm 20W - 20 W output, up to 1150 lm 28W ¹¹ - 28 W output, up to 1650 lm

INDIRECT WATTAGE ¹² Specify NA for Direct	DIMMING ¹³		ELECTRICAL
14W - 14 W output, up to 1102 lm 20W - 20 W output, up to 1550 lm NA - Not applicable ¹² Lumen outputs are reduced with full spectrum, consult factory.	INTEGRAL D1 - 1% 0-10V ELV ¹⁴ - ELV 120V TRI ¹⁴ - TRIAC 120V ¹³ PoE (Power-over-Ethernet) compatible. Consult factory for details. ¹⁴ Available with 120V only.	REMOTE ¹⁵ RD1 - 1% 0-10V ELV ¹⁶ - ELV 120V RTRI ¹⁶ - TRIAC 120V RLDE1 ¹⁷ - Lutron Hi-lume 1% Eco ¹⁵ A remote driver box is provided. ¹⁶ Available with 120V only. ¹⁷ On-site commissioning is required. ¹⁸ To specify, add +EB to the selected dimming option, e.g. RD1+EB.	1C - 1 circuit 2C ¹⁹ - 2 circuits ¹⁸ Available with Direct/Indirect only.
SOLA 18W - 18 W output, up to 1205 lm DUO 14W - 14 W output, up to 1005 lm 20W - 20 W output, up to 1435 lm NA - Not applicable	SOLA SD1 - Single 0-10V input SELV ¹⁴ - ELV 120V STRI ¹⁴ - TRIAC 120V	SOLA SD1 - Single 0-10V input RSELV ¹⁶ - ELV 120V RSTRI ¹⁶ - TRIAC 120V	DUO RDMX ¹⁷ - DMX RDDA ¹⁷ - DALI DT6 RDDA8 ¹⁷ - DALI DT8 RDD1 - Dual 0-10V input for CCT/intensity RLD2 ¹⁷ - Lutron DALI-2 digital +EB ¹⁸ - Emergency battery

CANOPY TYPE ²⁰	CANOPY FINISH	SUSPENSION ²⁶	OPTION ²⁹
			NA
FLR ^{21,22} - Flat round canopy, 4" octagonal junction box CDR ^{21,22} - Conduit feed, round canopy DMNC ^{21,23} - Direct mount, new construction DMRM ^{21,23,24} - Direct mount, remodel DR ²⁵ - Deep round canopy ²⁰ See page 6 for details. ²¹ Direct/Indirect requires a remote driver. ²² For 4" long cylinders, driver has to be in j-box when specified with integral drivers. See page 6 for details. ²³ 4" long cylinders require a remote driver. ²⁴ Single wiring entry only. No daisy chain connections allowed. ²⁵ Can accommodate up to 2 drivers.	FTMW - Matte white FTMB - Matte black FCHP - Champagne FDBZ - Dark bronze CF# - Custom finish, specify RAL#	BKS##IN - Matte black stem WHS##IN - Matte white stem BKSS##IN ²⁷ - Matte black swivel stem WHSS##IN ²⁷ - Matte white swivel stem CF#S##IN ²⁸ - Custom finish stem CF#SS##IN ^{27,28} - Custom finish swivel stem ²⁶ Min 10" - max 72", specify length (##) in inches. ²⁷ Not available with DMNC/DMRM/DR canopy options, or for 4" long cylinders when specified with FLR/CDR and integral driver. ²⁸ Specify RAL#.	NA - None ²⁹ To specify a JA8 compliant fixture, see page 3.



AERA 4" CYLINDER

PENDANT WALL WASH
DIRECT/INDIRECT, DIRECT
Title 24 JA8



Project: _____
Type: _____



Order Guide

LUMINAIRE ID ¹	DISTRIBUTION	CYLINDER HEIGHT	CYLINDER FINISH	BAFFLE STYLE	BAFFLE FINISH
AE4CYPWW	D			WW	
AE4CYPWW - Aera 4" Cylinder Pendant Wall Wash ¹ Pendant (direct) and Pendant Asymmetric also available. Consult other spec sheet.	D - Direct	4IN ² - 4" 8IN - 8" 12IN - 12" CH#IN ³ - Custom height ² Not available with DMNC/DMRM canopy options when specified with integral drivers. ³ Specify height (#) in 1" increments only. Up to maximum 36". For minimum heights, see page 4.	FTMW - Matte white FTMB - Matte black FCHP - Champagne FDBZ - Dark bronze CF# - Custom finish, specify RAL#	WW - Wall wash	FTMW - Matte white FTMB - Matte black FSPC - Satin silver FSSPC - Matte silver FCHP - Champagne FDBZ - Dark bronze CF# - Custom finish, specify RAL#

LENS	LIGHT SOURCE	DIRECT BEAM	COLOR QUALITY	CRI	COLOR TEMPERATURE	VOLTAGE
WW	SW	WW		90CRI		
WW - Wall wash diffuser	SW - Static white	WW - Wall wash	2STP - 2 Step MacAdam Ellipse 3STP - 3 Step MacAdam Ellipse	90CRI - 90+ CRI	27K - 2700K 30K - 3000K 35K - 3500K 40K - 4000K	120V - 120V 277V - 277V UNV - 120V-277V

DIRECT WATTAGE	INDIRECT WATTAGE	DIMMING	ELECTRICAL
14W	NA		1C
14W - 14 W output, up to 763 lm	NA - Not applicable	INTEGRAL D1 - 1% 0-10V ELV ⁴ - ELV 120V TRI ⁴ - TRIAC 120V ⁴ Available with 120V only.	REMOTE ⁵ RD1 - 1% 0-10V RELV ⁶ - ELV 120V RTRI ⁶ - TRIAC 120V RLDE1 ⁷ - Lutron Hi-lume 1% Eco ⁵ A remote driver box is provided. ⁶ Available with 120V only. ⁷ On-site commissioning is required.

CANOPY TYPE ⁸	CANOPY FINISH	SUSPENSION ¹³	OPTION
			JA8
FLR ⁹ - Flat round canopy, 4" octagonal junction box CDR ⁹ - Conduit feed, round canopy DMNC ¹⁰ - Direct mount, new construction DMRM ^{10,11} - Direct mount, remodel DR ¹² - Deep round canopy ⁸ See page 6 for details. ⁹ For 4" long cylinders, driver has to be in j-box when specified with integral drivers. See page 6 for details. ¹⁰ 4" long cylinders require a remote driver. ¹¹ Single wiring entry only. No daisy chain connections allowed. ¹² Can accommodate up to 2 drivers.	FTMW - Matte white FTMB - Matte black FCHP - Champagne FDBZ - Dark bronze CF# - Custom finish, specify RAL#	BKS##IN - Matte black stem WHS##IN - Matte white stem BKSS##IN ¹⁴ - Matte black swivel stem WHSS##IN ¹⁴ - Matte white swivel stem CF##IN ¹⁵ - Custom finish stem CF##SS##IN ^{14,15} - Custom finish swivel stem ¹³ Min 10" - max 72"; specify length (##) in inches. ¹⁴ Not available with DMNC/DMRM/DR canopy options, or for 4" long cylinders when specified with FLR/CDR and integral driver. ¹⁵ Specify RAL#.	JA8 - JA8 compliant



AERA 4" CYLINDER

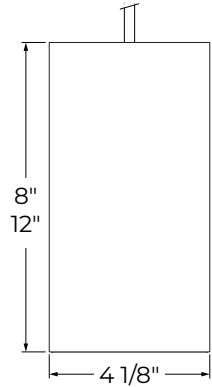
PENDANT WALL WASH
DIRECT/INDIRECT, DIRECT



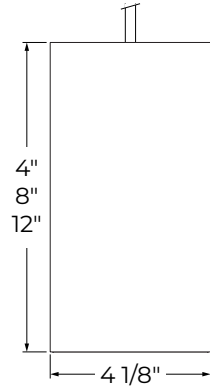
Dimensions

CYLINDER

Direct/Indirect



Direct

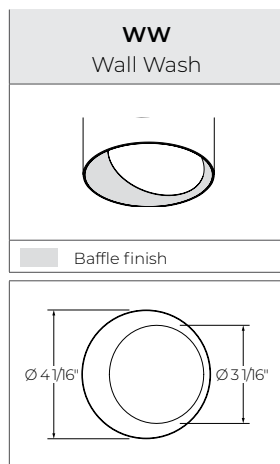


Minimum heights - Cylinder

Size	Distribution	Integral driver in cylinder	Integral driver in canopy or J-box	Remote driver
Ø 4"	Direct/Indirect	NA	8"	8"
	Direct	8"	4"	4"

*Consult factory for maximum heights.

BAFFLE

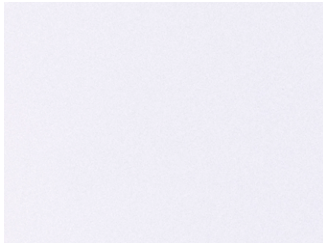


AERA 4" CYLINDER

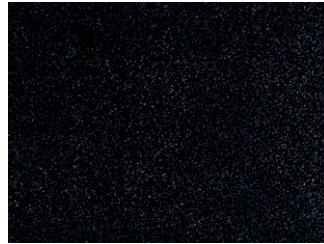
PENDANT WALL WASH
DIRECT/INDIRECT, DIRECT



Finishes



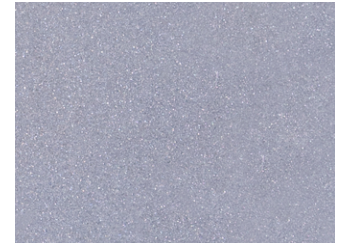
FTMW - Matte white



FTMB - Matte black



FSPC - Satin silver



FSSPC - Matte silver



FCHP - Champagne



FDBZ - Dark bronze

AERA 4" CYLINDER

PENDANT WALL WASH
DIRECT/INDIRECT, DIRECT



Mounting

CANOPY

INTEGRAL DRIVER					
Order code	FLR Flat round canopy, 4" octagonal junction box	CDR Conduit feed, round canopy	DMNC Direct mount, new construction	DMRM Direct mount, remodel	DR Deep round canopy
Canopy type					
Distribution	Direct				Direct/Indirect Direct
Canopy size	Ø 4 1/2" Height 3/8"	Ø 5 1/2" Height 1 15/16"	Ø 4 1/8" Height 2"		Ø 5 5/8" Height 1 3/8"
Suspension	Stem, Swivel stem ¹ <small>¹Not available for 4" long cylinders specified with FLR/CDR.</small>		Stem		
Min. height	4" (Driver in junction box) 8" (Driver in cylinder)		8"		D/I - 8" D - 4"
					Single wiring entry only. No daisy chain connections allowed.
					D/I - 2 drivers in canopy D - 1 driver in canopy or cylinder

REMOTE DRIVER					
Order code	FLR Flat round canopy, 4" octagonal junction box	CDR Conduit feed, round canopy	DMNC Direct mount, new construction	DMRM Direct mount, remodel	DR Deep round canopy
Canopy type					
Distribution	Direct/Indirect Direct				
Canopy size	Ø 4 1/2" Height 3/8"	Ø 5 1/2" Height 1 15/16"	Ø 4 1/8" Height 2"		Ø 5 5/8" Height 1 3/8"
Suspension	Stem, Swivel stem		Stem		
Min. height			D/I - 8" D - 4"		
					Single wiring entry only. No daisy chain connections allowed.

AERA 4" CYLINDER

PENDANT WALL WASH
DIRECT/INDIRECT, DIRECT



SUSPENSION

STEM	
Stem	Swivel stem ^{1,2}
Stem Lengths (*)	
Min 10" Max 72"	Min 10" Max 72" Max 45° tilt
<p>¹ Not available with DMNC/DMRM/DR canopy options, or for 4" long cylinders when specified with FLR/CDR and integral driver.</p> <p>² The total stem length (*) includes the 1" swivel base located inside the canopy.</p>	

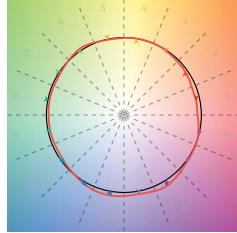
AERA 4" CYLINDER

PENDANT WALL WASH
DIRECT/INDIRECT, DIRECT



Color Quality

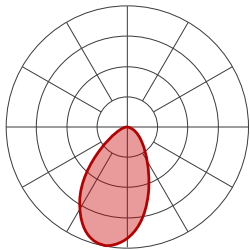
COLOR QUALITY - 3500K	
TM-30 R _r	90
TM-30 R _g	100
CRI	90+
R9	> 50



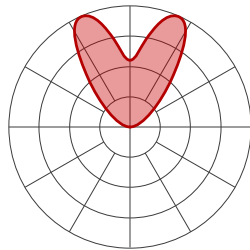
Photometrics

WALL WASH

Values calculated based on 3500K and white wall wash baffle.



Wall Wash



80°
Uplight

Delivered lumens (LM)

BEAM	80+ CRI		90+ CRI		95+ CRI	
	WW	Uplight	WW	Uplight	WW	Uplight
14 W	763	1102	713	1029	549	792
20 W	1216	1550	1136	1448	875	1114
28 W	1632	NA	1525	NA	1174	NA

Efficacy (LM/W)

BEAM	80+ CRI		90+ CRI		95+ CRI	
	WW	Uplight	WW	Uplight	WW	Uplight
14 W	54	79	51	74	39	57
20 W	61	78	57	72	44	56
28 W	58	NA	54	NA	42	NA

MULTIPLIERS

Please follow the multiplier tables to ensure correct lumen value. CCT and baffle colors will change the lumen value.

CCT	Multiplier
2200K	0.80
2400K	0.87
2700K	0.94
3000K	0.98
3500K	1
4000K	1.05
5000K	1.05

BAFFLE COLOR	
White	1
Black	1

For SOLA and DUO, please consult factory.

DIRECT/INDIRECT - LPW CALCULATION

For Direct/Indirect performance values, follow the formula.

$$\left(\frac{\text{DIRECT LM} + \text{UPLIGHT LM}}{\text{DIRECT W} + \text{UPLIGHT W}} \right) = \text{LPW}$$



AERA 4" CYLINDER

PENDANT WALL WASH
DIRECT/INDIRECT, DIRECT

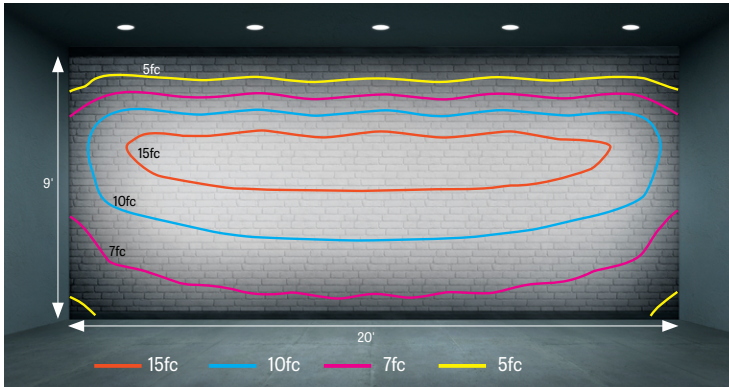


Photometrics

UNIFORMITY

Values calculated based on 3500K and white wall wash baffle.

24" from Wall - 36" Spacing



Foot-candles

FC ON WALL		24" FROM WALL - 24" SPACING			24" FROM WALL - 36" SPACING			24" FROM WALL - 48" SPACING			24" FROM WALL - 60" SPACING		
		80+ CRI	90+ CRI	95+ CRI	80+ CRI	90+ CRI	95+ CRI	80+ CRI	90+ CRI	95+ CRI	80+ CRI	90+ CRI	95+ CRI
ABOVE FINISHED FLOOR	9'	12	11	9	7	7	5	6	6	5	6	5	4
	8'	54	51	39	33	31	24	28	27	20	26	25	19
	7'	74	70	54	48	45	34	39	36	28	35	33	25
	6'	65	61	47	43	40	31	33	31	24	29	27	21
	5'	50	47	36	34	31	24	25	24	18	21	20	15
	4'	39	36	28	26	25	19	20	18	14	16	15	12
	3'	31	29	22	21	20	15	15	14	11	13	12	9
	2'	26	24	18	18	16	13	13	12	9	11	10	8
	1'	22	21	16	15	14	11	11	10	8	9	9	7

AERA 4" CYLINDER

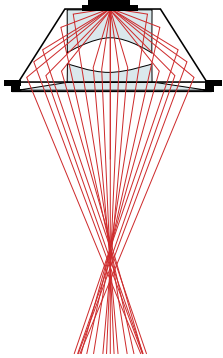
PENDANT WALL WASH
DIRECT/INDIRECT, DIRECT



Technical Specifications

OPTIC

XPoint™ Refraction Technology optics provide precise optical control in a remarkably compact form. Micro optical paths from the chip on board converge and then disperse in precise beam angles, resulting in a crisp and exacting light quality.



LIGHT SOURCE

Static white

Compact COB (Chip-On-Board) LED module, available in 2200K, 2400K, 2700K, 3000K, 3500K, 4000K, and 5000K with a choice of 80+ CRI, 90+ CRI, or 95+ CRI, with elevated R9 value for 90+ CRI and above. Color consistency is maintained to within 2 SDCM. All LEDs have been tested in accordance with IESNA LM-80-08 and the results have shown L80 lumen maintenance greater than 60,000 hours. Absolute product photometry is measured and presented in accordance with IESNA LM-79, unless otherwise indicated.

Full spectrum static white

The full spectrum LED option offers improved color particularly in the cyan region that is beneficial in both healthcare and circadian lighting strategies. The cyan region in full spectrum LED is richer at the 480 nm range.

Chromawerx SOLA

Chromawerx SOLA is single-channel control that dims output while warming the color temperature in a pre-determined relationship. Two color temperature range options are offered: 3000K to 1800K, and 2700K to 1800K. A simple analog control adjusts a specially populated LED array to emulate the effect of dimming a filament source.

Chromawerx DUO

Chromawerx DUO offers a two-channel control system which uses analog or digital protocols for synchronous control of both cool to warm LED arrays - maintaining a CRI above 90. Two color temperature range options are offered: 6500K to 2700K, and 5000K to 2700K. The range of color DUO offers is useful for entraining circadian rhythms, stimulating alertness, and compensating for jet lag among other applications. The Chromawerx drivers are programmed to limit maximum light output and power usage across all color temperatures. When paired with DALI drivers (DDA/DDA8), color tuning follows a linear dimming curve.

ELECTRICAL

Unless otherwise specified, dimming down to 1%. At maximum driver load: efficiency > 84%, PF > 0.9, THD < 20%. ELV and TRIAC dimming performance (including minimum dimming percentage) subject to dimmer selection.

Integral: 0-10V, ELV, TRIAC

Remote: 0-10V, ELV, TRIAC, Lutron Hi-Lume 1% EcoSystem, DALI, eldoLED 0.1% SOLOdrive 0-10V, eldoLED 1% ECOdrive 0-10V, DMX, Lutron DALI-2 digital

Emergency battery option: Remotely-installed, long-life, high-temperature, maintenance-free, Bodine Lithium-Ion battery pack with self-test functionality, test switch and charge indicator. IOTA and Fulham options available upon request. Minimum of 90 minutes operation, and recharge time of 24 hours. For fixtures less than 10 W, the battery provides 6 W of emergency light output. For fixtures 10 W and over, the battery provides 10 W.

PoE

Depending on the PoE manufacturer selected, Lumenwerx will install the node in factory as either integral to the luminaire or as a remote module. Factory programming of the PoE node may or may not enable the following functionalities: lumen package, DUO (tunable white), QUADRO (RGBW), emergency battery backup, and sensor integration. These must be addressed and evaluated on a case-by-case basis.

CONSTRUCTION

Housing: Die-cast and extruded aluminum

Stem: Ø 1/2" rigid stem and swivel stem 10" to 72" standard length

Canopy: Flat, conduit feed, direct, and deep

Finish: Matte white, matte black, champagne, and dark bronze.

Custom colors also available (provide RAL #). Satin silver and matte silver finishes are also available for Baffle.

Heat sink: Die-cast aluminum

Baffle: Die-cast aluminum

Baffle style: Wall Wash

AERA 4" CYLINDER

PENDANT WALL WASH
DIRECT/INDIRECT, DIRECT



WEIGHT

Direct/Indirect	Direct
8" : 3.4 lbs - 1.5 kg	4" : 2.2 lbs - 1 kg
12" : 4 lbs - 1.8 kg	8" : 2.9 lbs - 1.3 kg
	12" : 3.4 lbs - 1.5 kg

ENVIRONMENT

Ambient temperature at fixture location shall be within 0°C/32°F - 25°C/77°F, indoor dry or damp as well as outdoor damp use (canopies or marquees).

CERTIFICATIONS

ETL: Rated for indoor dry/damp locations. Conforms to UL Standard 1598 and certified to CAN/CSA Standard C22.2 No. 250.0.

Title 24 JAB: California Building Standards Code

Declare: [LBC Red List Approved](#)

WARRANTY

Lumenwerx provides a five-year limited warranty on electrical and mechanical performance of the luminaires, including the LED boards, drivers, and auxiliary electronics. Lumenwerx will repair or replace defective luminaires or components at our discretion, provided they have been installed and operated in accordance with our specifications. Other limitations apply, please refer to the full warranty on our website.