

ARQ AERA ACOUSTIX

PENDANT

DIRECT/INDIRECT, DIRECT



Project: _____

Type: _____



DESCRIPTION

Part of the Arq Acoustix series, the Arq Aera is an acoustic pendant equipped with an arc-shaped shade made of sound-absorbing felt created from recycled bottles. Its design integrates proprietary XPoint™ Refraction Technology optics to deliver soft, visually comfortable, low glare lighting.

Order Guide

LUMINAIRE ID	SIZE	DISTRIBUTION	INDIRECT OPTIC Specify NA for Direct		LIGHT SOURCE	
ARQAEACOP	24IN					
ARQAEACOP - Arq Aera Acoustix Pendant	24IN - Ø 24"	DI - Direct/Indirect D - Direct	FFFH - Fully frosted flush diffuser FF14 - Fully frosted 1/4" diffuser FF34 - Fully frosted 3/4" diffuser NA - Not applicable		SW - Static white FS - Full spectrum static white SOLA - Dim-to-warm single channel control DUO - Tunable white 2-channel control	
DIRECT BEAM	COLOR QUALITY	CRI	COLOR TEMP.		ACCESSORY	VOLTAGE
15DEG - 15° Narrow spot 25DEG - 25° Spot 35DEG - 35° Narrow flood 50DEG - 50° Wide flood 80DEG - 80° Very wide flood 90DEG - 90° Open flood	2STP ¹ - 2 Step MacAdam Ellipse 3STP - 3 Step MacAdam Ellipse ¹ Not available with full spectrum.	<u>Static white</u> 80CRI - 80+ CRI 90CRI - 90+ CRI 95CRI - 95+ CRI <u>Full spectrum</u> 95CRI - 95+ CRI	22K ² - 2200K 24K ² - 2400K 27K - 2700K 30K - 3000K 35K - 3500K 40K - 4000K 50K ² - 5000K		LSDL - Soft diffused lens, Solite LFDL - Frosted diffused lens LCL - Clear lens HEX ³ - Hex Louver	120V - 120V 277V - 277V UNV - 120V-277V 347V ⁴ - 347V
50DEG - 50° Wide flood	3STP - 3 Step MacAdam Ellipse	90CRI - 90+ CRI	SOLA - Dim-to-warm single channel control 35K to 22K DUO - Tunable white 2-channel control 65K to 27K		³ Not available with 80°/90° beam options.	⁴ Only available with RD1 driver. Please consult factory.
DIRECT WATTAGE ⁵		INDIRECT WATTAGE ⁷ Specify NA for Direct		DIMMING ⁸		
10W - 10 W output, up to 1132 lm 14W - 14 W output, up to 1545 lm 20W ⁶ - 20 W output, up to 2135 lm ⁵ Lumen outputs are reduced with full spectrum, consult factory. ⁶ Not available for a DI fixture.		10W - 10 W output, up to 742 lm 14W - 14 W output, up to 1007 lm NA - Not applicable ⁷ Lumen outputs are reduced with full spectrum, consult factory.		CANOPY DRIVER DI - 1% 0-10V ELV ⁹ - ELV 120V TRI ⁹ - TRIAC 120V ⁸ PoE (Power-over-Ethernet) compatible. Consult factory for details. ⁹ Available with 120V only.		
SOLA 12W - 12 W output, up to 725 lm		SOLA 12W - 12 W output, up to 431 lm		REMOTE DRIVER ¹⁰ RD1 - 1% 0-10V RELV ¹¹ - ELV 120V RTRI ¹¹ - TRIAC 120V ¹⁰ A remote driver box is provided. ¹¹ Available with 120V only. ¹² On-site commissioning is required.		
DUO 11W - 11 W output, up to 525 lm		DUO 11W - 11 W output, up to 285 lm NA - Not applicable		SOLA SDI - Single 0-10V input SELV ⁹ - ELV 120V STRI ⁹ - TRIAC 120V SOLA RSD1 - Single 0-10V input RSELV ¹¹ - ELV 120V RSTRI ¹¹ - TRIAC 120V DUO RDMX ¹² - DMX RDDA ¹² - DALI DT6 RDDA8 ¹² - DALI DT8 RDD1 - Dual 0-10V input for CCT/intensity RLD2 ¹² - Lutron DALI-2 digital		
ELECTRICAL	CYLINDER FINISH ¹⁴	FELT COLOR	CANOPY TYPE ¹⁵		CANOPY FINISH	SUSPENSION
1C - 1 circuit 2C ¹³ - 2 circuits ¹³ Only available with Direct/Indirect with remote driver.	FTMW - Matte white FTMB - Matte black CF# - Custom finish, specify RAL# ¹⁴ Flanged trim will match cylinder finish.	FONCDN - Outside Fog, inside Cloudy MDNCDN - Outside Midnight blue, inside Cloudy LENSAN - Outside Latte, inside Sand CYNSAN - Outside Cherry, inside Sand	FLR ¹⁶ - Flat round canopy, 4" octagonal junction box CDR ¹⁶ - Conduit feed, round canopy DMNC ¹⁷ - Direct mount, new construction DMRM ^{17,18} - Direct mount, remodel DR ¹⁹ - Deep round canopy ¹⁵ See page 4 for details. ¹⁶ Direct/Indirect requires a remote driver. ¹⁷ Remote driver only. ¹⁸ Single wiring entry only. No daisy chain connections allowed. ¹⁹ Can accommodate up to 2 drivers.		FTMW - Matte white FTMB - Matte black CF# - Custom finish, specify RAL#	POWER CORD ²⁰ BPC##IN - Black PVC WPC##IN - White PVC ²⁰ Min 36" - max 72", specify length (##) in inches.



ARQ AERA ACOUSTIX

PENDANT

DIRECT/INDIRECT, DIRECT



Felt Color



FONCDN

Outside Fog, inside Cloudy



MDNCDN

Outside Midnight blue, inside Cloudy



LENSAN

Outside Latte, inside Sand



CYN SAN

Outside Cherry, inside Sand

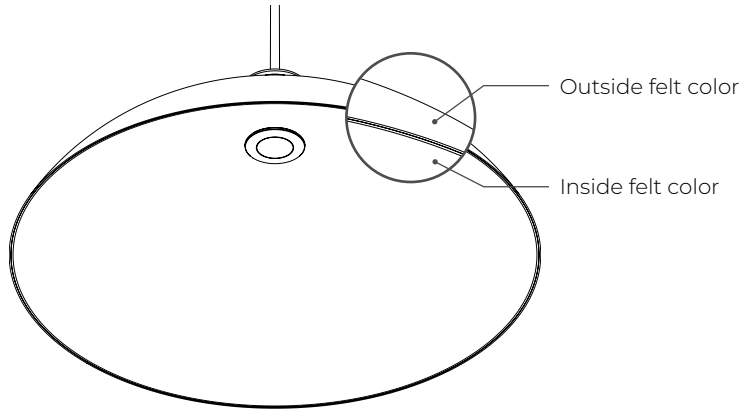
ARQ AERA ACOUSTIX

PENDANT

DIRECT/INDIRECT, DIRECT



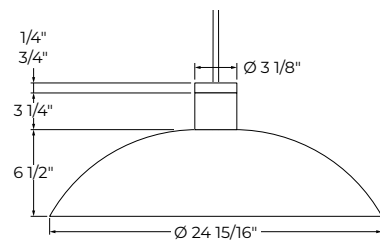
Overview



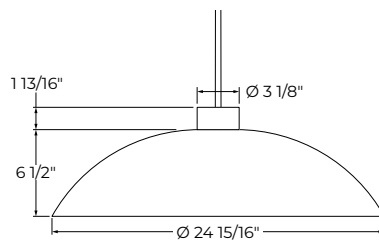
Dimensions

SIDE VIEW

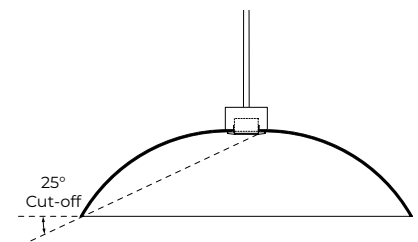
Direct/Indirect



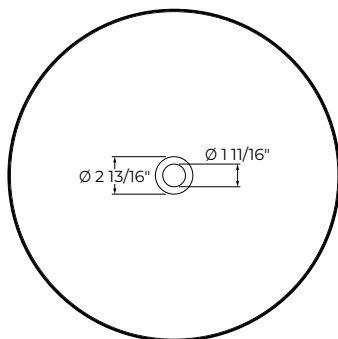
Direct



CUT-OFF ANGLE



BOTTOM VIEW



ARQ AERA ACOUSTIX

PENDANT

DIRECT/INDIRECT, DIRECT



Mounting

CANOPY

CANOPY DRIVER			
Order code	FLR Flat round canopy, 4" octagonal junction box	CDR Conduit feed, round canopy	DR Deep round canopy
Canopy type			
Distribution	Direct		Direct/Indirect Direct
Canopy size	Ø 4 1/2" Height 3/8"	Ø 5 1/2" Height 1 15/16"	Ø 5 5/8" Height 1 3/8"
	D/I - 2 drivers in canopy D - 1 driver in canopy		

REMOTE DRIVER					
Order code	FLR Flat round canopy, 4" octagonal junction box	CDR Conduit feed, round canopy	DMNC Direct mount, new construction	DMRM Direct mount, remodel	DR Deep round canopy
Canopy type					
Distribution	Direct/Indirect Direct				
Canopy size	Ø 4 1/2" Height 3/8"	Ø 5 1/2" Height 1 15/16"	Ø 3 1/8" Height 2"		Ø 5 5/8" Height 1 3/8"
				Single wiring entry only. No daisy chain connections allowed.	

SUSPENSION

POWER CORD
Power Cord Lengths
Min 36" Max 72"

ARQ AERA ACOUSTIX

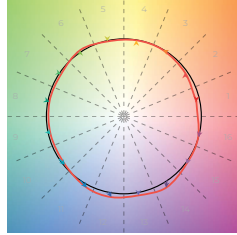
PENDANT

DIRECT/INDIRECT, DIRECT



Color Quality

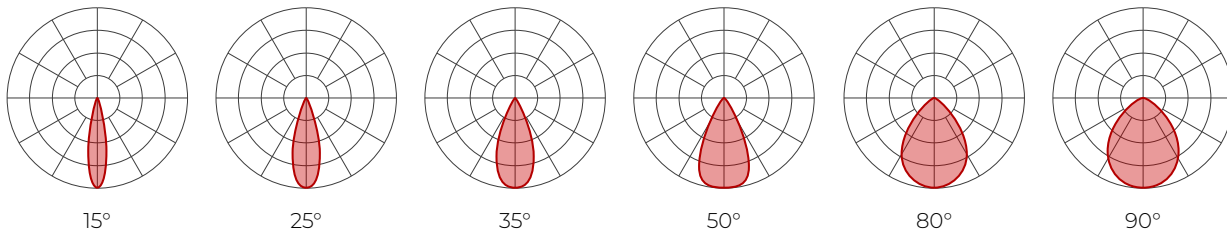
COLOR QUALITY - 3500K	
TM-30 R _f	90
TM-30 R _a	100
CRI	90+
R9	> 50



Photometrics

Values calculated based on 3500K and LSDL lens option.

DIRECT



Delivered Lumens (LM)

CRI	80+ CRI						90+ CRI						95+ CRI					
	BEAM	15°	25°	35°	50°	80°	90°	15°	25°	35°	50°	80°	90°	15°	25°	35°	50°	80°
10 W	1056	1127	1132	1003	902	902	987	1053	1058	937	843	843	760	811	815	721	649	649
14 W	1441	1539	1545	1370	1233	1233	1347	1438	1444	1280	1152	1152	1037	1107	1112	986	887	887
20 W	1991	2125	2135	1892	1703	1703	1861	1986	1995	1768	1591	1591	1433	1529	1536	1361	1225	1225

Efficacy (LM/W)

CRI	80+ CRI						90+ CRI						95+ CRI					
	BEAM	15°	25°	35°	50°	80°	90°	15°	25°	35°	50°	80°	90°	15°	25°	35°	50°	80°
10 W	106	113	113	100	90	90	99	105	106	94	84	84	76	81	81	72	65	65
14 W	103	110	110	98	88	88	96	103	103	91	82	82	74	79	79	70	63	63
20 W	100	106	107	95	85	85	93	99	100	88	80	80	72	76	77	68	61	61

MULTIPLIERS

Please follow the multiplier tables to ensure correct lumen value. CCT and accessories will change the lumen value.

CCT	
2200K	0.80
2400K	0.87
2700K	0.94
3000K	0.98
3500K	1
4000K	1.05
5000K	1.05

ACCESSORIES	
Soft diffused lens, Solite	1
Frosted lens	0.8
Clear lens	1.1
Hex louver	0.86

For SOLA and DUO, please consult factory.

www.lumenwerx.com
T (514) 225-4304

© Lumenwerx, ULC. All rights reserved.



Lumenwerx reserves the right to modify product specifications without notification.
ARQ-AERA-ACOUSTIX-PENDANT-SPEC-REV5 March 10, 2026



ARQ AERA ACOUSTIX

PENDANT

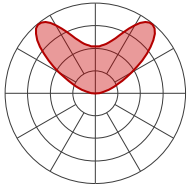
DIRECT/INDIRECT, DIRECT



INDIRECT

Values calculated based on 3500K.

Fully frosted flush



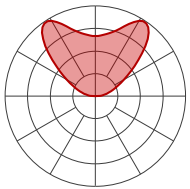
Delivered Lumens (LM)

CRI	80+ CRI	90+ CRI	95+ CRI
10 W	560	524	403
14 W	760	711	547

Efficacy (LM/W)

CRI	80+ CRI	90+ CRI	95+ CRI
10 W	56	52	40
14 W	54	51	39

Fully frosted 1/4"



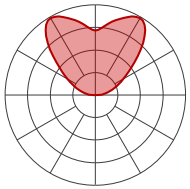
Delivered Lumens (LM)

CRI	80+ CRI	90+ CRI	95+ CRI
10 W	709	664	510
14 W	963	901	693

Efficacy (LM/W)

CRI	80+ CRI	90+ CRI	95+ CRI
10 W	71	66	51
14 W	69	64	49

Fully frosted 3/4"



Delivered Lumens (LM)

CRI	80+ CRI	90+ CRI	95+ CRI
10 W	742	694	534
14 W	1007	942	725

Efficacy (LM/W)

CRI	80+ CRI	90+ CRI	95+ CRI
10 W	74	69	53
14 W	72	67	52

MULTIPLIER

Please follow this multiplier table to ensure correct lumen value. CCT will change the lumen value.

CCT	
2200K	0.80
2400K	0.87
2700K	0.94
3000K	0.98
3500K	1
4000K	1.05
5000K	1.05

For SOLA and DUO, please consult factory.

DIRECT/INDIRECT - EFFICACY CALCULATION

For Direct/Indirect performance values, follow the formula.

$$\frac{\left(\begin{array}{c} \text{DIRECT} \\ \text{DELIVERED LM} \end{array} + \begin{array}{c} \text{INDIRECT} \\ \text{DELIVERED LM} \end{array} \right)}{\left(\begin{array}{c} \text{DIRECT} \\ \text{WATTAGE} \end{array} + \begin{array}{c} \text{INDIRECT} \\ \text{WATTAGE} \end{array} \right)} = \text{EFFICACY}$$

ARQ AERA ACOUSTIX

PENDANT

DIRECT/INDIRECT, DIRECT



Acoustic Calculator

Using the Lumenwerx Acoustix Value Calculator table, you can determine the number of acoustic luminaires required in a space by fixture type. We have three levels of recommended sound reduction: good, better, and best. Choosing one of these options will reduce the sound accordingly. The best option indicates the best acoustic improvement. Calculations are based on a standard ceiling height of 9 feet.



- 1 Calculate the square feet of your room (L x W).
- 2 Choose the level of acoustical improvement you are looking for, and find the corresponding value based on your room dimension and luminaire configuration.

% in reduction in reverberation time		
😊	GOOD	25%
😊😊	BETTER	40%
😊😊😊	BEST	50%

LUMINAIRE	Room dimensions under 300 sq ft			Room dimensions over 300 sq ft		
	GOOD 😊	BETTER 😊😊	BEST 😊😊😊	GOOD 😊	BETTER 😊😊	BEST 😊😊😊
Arq Aera Acoustix, Ø 24"	25	14	11	39	22	17

- 3 Use the Lumenwerx Acoustix Value Formula to determine the number of luminaires needed in the room.

$$\text{Square feet} \div \text{Value} = \text{Number of luminaires}$$

Example:

Luminaires: Arq Aera Acoustix, Ø 24"

Room square feet: L: 20 ft x W: 18 ft = 360 sq ft

Desired acoustical improvement: Better = 22

Number of luminaires needed in the room: $360 \div 22 = 16$ luminaires

NOTES:

Lumenwerx acoustic calculators were developed to act as a guide. For precise acoustic performance in a space, please consult an acoustician.

ARQ AERA ACOUSTIX

PENDANT

DIRECT/INDIRECT, DIRECT



Technical Specifications

OPTIC

XPoint™ Refraction Technology optics provide precise optical control in a remarkably compact form. Micro optical paths from the chip on board converge and then disperse in precise beam angles, resulting in a crisp and exacting light quality.

LIGHT SOURCE

Static white

Compact COB (Chip-On-Board) LED module, available in 2200K, 2400K, 2700K, 3000K, 3500K, 4000K, and 5000K with a choice of 80+ CRI, 90+ CRI, or 95+ CRI, with elevated R9 value for 90+ CRI and above. Color consistency is maintained to within 2 SDCM. All LEDs have been tested in accordance with IESNA LM-80-08 and the results have shown L80 lumen maintenance greater than 60,000 hours. Absolute product photometry is measured and presented in accordance with IESNA LM-79, unless otherwise indicated.

Full spectrum static white

The full spectrum LED option offers improved color particularly in the cyan region that is beneficial in both healthcare and circadian lighting strategies. The cyan region in full spectrum LED is richer at the 480 nm range.

Chromawerx SOLA

Chromawerx SOLA is single-channel control that dims output while warming the color temperature in a pre-determined relationship. A simple analog control adjusts a specially populated LED array to emulate the effect of dimming a filament source.

Chromawerx DUO

Chromawerx DUO offers a two-channel control system which uses analog or digital protocols for synchronous control of both cool (6500K) to warm (2700K) LED arrays - maintaining a CRI above 90. The range of color DUO offers is useful for entraining circadian rhythms, stimulating alertness, and compensating for jet lag among other applications. The Chromawerx drivers are programmed to limit maximum light output and power usage across all color temperatures. When paired with DALI drivers (DDA/DDA8), color tuning follows a linear dimming curve.



WELL for Light: The WELL building standard focuses on light quality in several features. There are three categories that are fully attributed to the construction and features of a luminaire. In WELL V1, it's Feature 54 Circadian Lighting, Feature 55 Glare Control, and Feature 58 Color Quality. In WELL V2, it's Feature L03 Circadian Lighting, Feature L04 Glare Control, and Feature L07 Electric Light Quality.

This fixture meets Features:

- Feature 54 or L03 when full spectrum or DUO is selected
- Feature 58 or L07 when 90+ CRI or above is selected

All LED drivers used at Lumenwerx are deemed to have a low risk level of flicker, of 5% or less below 90Hz operational as defined by IEEE standard 1789-2015 LED.



WELL for Sound: This luminaire is recommended for use as an acoustical absorption surface to limit reverberation times (RT) in a given space. This luminaire contributes to noise reduction and vibration dampening to promote focus and concentration. Reverberation needs to be calculated in each space based on the materials used.



WELL for Mind: This luminaire meets WELL for mind as it is a human centric luminaire offering quality light, excellent color, and smooth optics. If any of these features are incorporated in a luminaire, it can improve the ability to focus, concentrate, and persist longer on a given task. This fixture harmoniously operates in a space to assist the mind.

For more information, please contact well@lumenwerx.com

BEAM ANGLES



ELECTRICAL

Unless otherwise specified, dimming down to 1%. At maximum driver load: efficiency>84%, PF>0.9, THD<20%.

ELV and TRIAC dimming performance (including minimum dimming percentage) subject to dimmer selection.

Canopy driver: 0-10V, ELV, TRIAC

Remote driver: 0-10V, ELV, TRIAC, Lutron Hi-Lume 1% EcoSystem, DALI, eldoLED 0.1% SOLOdrive 0-10V, eldoLED 1% ECOdrive 0-10V, DMX, Lutron DALI-2 digital

ARQ AERA ACOUSTIX

PENDANT

DIRECT/INDIRECT, DIRECT



PoE

Depending on the PoE manufacturer selected, Lumenwerx will install the node in factory as either integral to the luminaire or as a remote module. Factory programming of the PoE node may or may not enable the following functionalities: lumen package, DUO (tunable white), QUADRO (RGBW), emergency battery backup, and sensor integration. These must be addressed and evaluated on a case-by-case basis.

ACOUSTIC FINISH

Material is 100% polyester containing up to 50% of recycled plastic bottles (PET) with an ASTM E-84 Class A fire rating and is moisture resistant.

CARE

Remove dust and debris with a clean, dry, soft, lint-free cloth, or vacuum.

CONSTRUCTION

Housing: Die-cast and extruded aluminum

Trim: Aluminum

Power cord: Black and white PVC. 36" to 72" standard length

Canopy: Flat, conduit feed, direct, and deep

Finish: Matte white, black. Custom colors also available (provide RAL #).

WEIGHT

Direct/Indirect	Direct
6.99 lbs - 3.17 kg	4.19 lbs - 1.9 kg

ACCESSORIES



Soft diffused lens, Solite



Frosted diffused lens



Clear lens



Hex Louver

ENVIRONMENT

Ambient temperature at fixture location shall not exceed 30°C/86°F. For indoor use only.

CERTIFICATION

ETL: Rated for indoor dry/damp locations. Conforms to UL Standard 1598 and certified to CAN/CSA Standard C22.2 No. 250.0.

WARRANTY

Lumenwerx provides a five-year limited warranty on electrical and mechanical performance of the luminaires, including the LED boards, drivers, and auxiliary electronics. Lumenwerx will repair or replace defective luminaires or components at our discretion, provided they have been installed and operated in accordance with our specifications. Other limitations apply, please refer to the full warranty on our website.