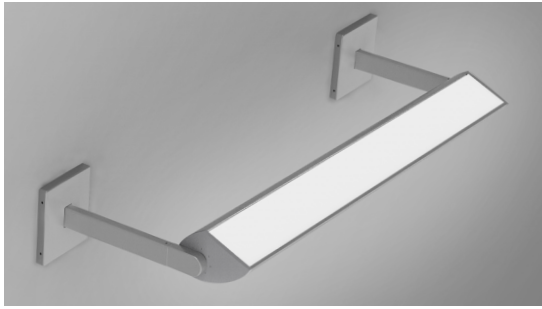


AXLE LED

WALL ASYMMETRIC INDIRECT



DESCRIPTION

Axle is an elegant and compact LED linear accent luminaire providing efficient asymmetric light distribution. Softly curved, Axle measures just 2 11/16" by 3 11/16". With adjustable optics, light output from 350 to 1200 lumens per foot (nominal), and efficacy up to 126 LPW, Axle delivers smooth, effective indirect illumination. Highly flexible, Axle can be installed as individual luminaires (up to 8') or in continuous runs. LED boards and on-board driver are accessible without removing the luminaire.



PROJECT: _____

TYPE: _____

NOTES: _____

ORDER GUIDE

up to 126 lm/w performance

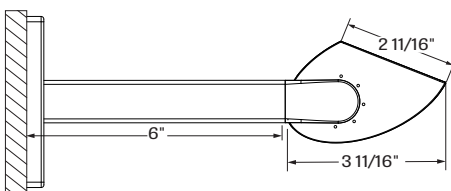
AXLWAI	APO	SW			
LUMINAIRE ID	OPTICS	LIGHT SOURCE	CRI	LUMEN PACKAGES	COLOR TEMP.
AXLWAI - Axle wall asymmetric indirect	APO - Adjustable Asymmetric Projecting Optic	SW - Static white	80 - 80CRI 90 - 90CRI	350 - min. eco low output 350lm/ft 550 - low output 550lm/ft 750 - medium output 750lm/ft 950 - high output 950lm/ft 1200 - max. ultra high output 1200lm/ft #### - other required lm/ft	27 - 2700k 30 - 3000k 35 - 3500k 40 - 4000k

LUMINAIRE LENGTH	VOLTAGE	DRIVER	ELECTRICAL
Standard sections - 2', 3', 4', 5' & 8' For all other specify length #FT - nominal length in feet #IN - length in inches	120 - 120V 277 - 277V UNV - 120V-277V 347 - 347V (not available with Lutron)	D1 - 1% dimming 0-10V DA - Dali LDE1 - Lutron Hi-lume 1% Eco	1 - 1 circuit +#EB - emergency battery (min 4' fixture, except Lutron) +#EM - emergency light circuit +#NL - night light circuit

See page 2 for ordering code detailed information

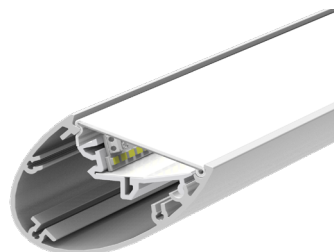
MOUNTING	MOUNTING PLATE	FINISH	OPTIONS
ARM6 - Cantilever arm 6" ARM12 - Cantilever arm 12" ARM18 - Cantilever arm 18" ARM## - Cantilever arm custom length (max 24")	55W - 5" by 5" white plate 55AL - 5" by 5" aluminum plate	W - matte white AL - aluminum CF# - custom finish specify RAL#	CU - custom

CROSS SECTION



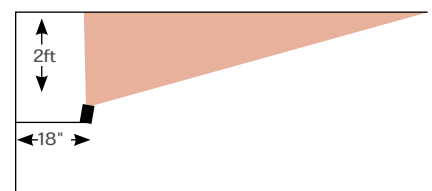
AXLWAI - Axle wall 6" cantilever arm

OPTICS



APO - Asymmetric Projecting Optics

LIGHT DISTRIBUTION



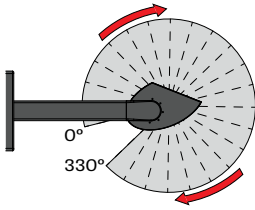
With an 18" arm

OPTICS

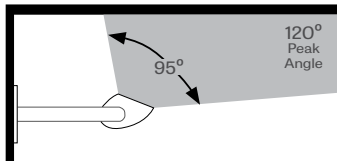
ASYMMETRIC PROJECTING OPTIC (APO) -

Cartridge-mounted, linear LED arrays are paired with precisely formed semi-specular reflector for smooth light distribution and a 95° beam spread. The LED array is protected by a clear acrylic cover. In an indirect orientation, peak intensity occurs at 120° above nadir with a peak-to-zenith intensity ratio of 5.2:1.

Field Adjustable Aiming (15 options)



The Axle housing can be field rotated to provide either indirect (ceiling) or direct illumination. Detents in 15° increments permit precise aiming.



LIGHT SOURCE - LED

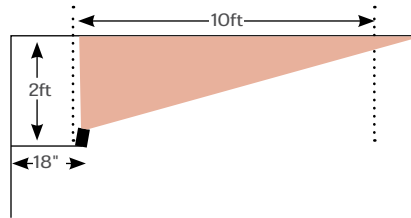
Custom linear array of mid-flux LED's are cartridge-mounted to facilitate service and thermal management. Available in 3000K, 3500K and 4000K with a minimum 80 CRI and an option for 90 CRI with elevated R9 value. Color consistency are maintained to within 3 SDCM. LEDs operate at reduced drive current to optimize efficacy and lumen maintenance.

All LEDs have been tested in accordance with IESNA LM-80-08 and the results have shown L80 lumen maintenance greater than 60,000 hours. Absolute product photometry is measured and presented in accordance with IESNA LM-79, unless otherwise indicated.

PERFORMANCE PER 4' AT 4000K - APO

LED output	Color Temp	Watts	Nominal Delivered Lumens	Efficacy LPW
eco low output	4000K	11	1400	125
low output	4000K	17.5	2200	126
medium output	4000K	24.5	3000	123
high output	4000K	31.5	3800	121
ultra high output	4000K	40.5	4800	119

LIGHT DISTRIBUTION



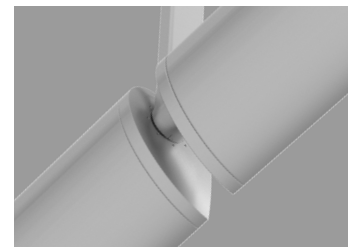
AXLWAI-APO-LED-80-350-40-20FT
Luminaire Watts = 58W (for 20ft)
Room Size: L=20ft x H=10ft x W=10ft
Mounting Height = 8Ft from the floor

Foot Candles on 20' wide ceiling

26.7	65.3	29.9	11.0	6.5
29.5	75.9	35.4	12.6	7.1
29.9	78.0	37.5	13.5	7.4
29.8	78.2	38.1	13.9	7.9
29.9	78.2	38.3	14.1	8.2
29.9	78.2	38.2	14.1	8.2
29.8	78.2	38.1	13.9	7.9
29.7	77.9	37.5	13.5	7.5
29.3	75.8	35.3	12.5	7.1
27.3	65.0	29.8	10.9	6.4

LUMINAIRE LENGTH

Axle is available in individual lengths up to 8'. The mounting hub provides connections for installation in continuous rows, allowing each luminaire to be aimed independently.

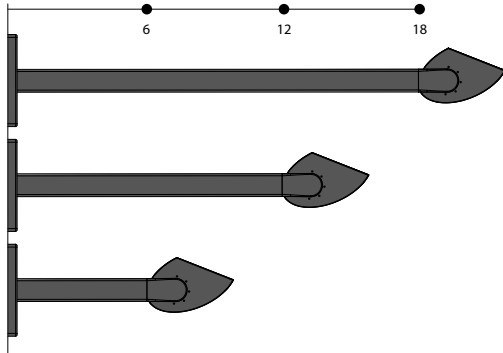


ELECTRICAL

Factory-set, adjustable output current LED driver with universal (120-277VAC) input. Dimmable from 100% to 1% with 0-10V dimming control. Rated life (90% survivorship) of 50,000 hours at 50°C max. ambient (and 70°C max. case) temperature. At maximum driver load: Efficiency>84%, PF>0.9, THD<20%. Other specifiable options include Lutron Hi-Lume 1% Eco and DALI protocol drivers. All of our standard 0-10V drivers are NEMA 410 compliant.

MOUNTING

Axle is wall mounted using fixed steel arms, 6", 12" or 18" long. Arm mounting provides concealed wiring and connects to outlet boxes using 4" square and round mounting plate and 4" x 2" plate are also available.



MOUNTING PLATES



5" x 5"

FINISH

Interior - Natural aluminium inner extrusion and 95%, reflective white brackets

Exterior - White or aluminum powder coating.

EMERGENCY

Factory installed long life high temperature recyclable Ni-Cad battery pack with test switch and charge indicator, minimum of 90 minutes operation, up to 1000 lumens per 4ft (25°C) emergency lighting output. Recharge time of 24 hours.

CONSTRUCTION

Housing - extruded aluminum 0.090" nominal thickness

Reflector - semi-specular anodised aluminum sheet 0.020"

Reflector bracket - extruded aluminum 0.090" nominal thickness / Natural finish)

Lens - Extruded Clear Acrylic 0.050" nominal thickness

Interior Brackets - 22 GA CRS / Painted White

End-caps - die-cast aluminum

Joiner - die-cast aluminum

Cantilever - rectangular cold rolled steel tube with welded mounting plate

MAINTENANCE

LED boards are removable from the cartridge for easy replacement. Both cartridge and driver are accessible without removing the luminaire.

WEIGHT

AXLE 4ft - 3.2Kg - 7lb

AXLE 8ft - 6.3Kg - 14lb

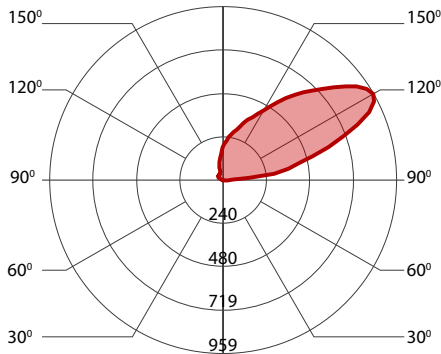
CERTIFICATIONS

ETL - Rated for Indoor Dry/Damp locations. Conforms to UL Standard 1598 and certified to CAN/CSA Standard C22.2 No. 250.0.

WARRANTY

LumenWerx provides a five-year limited warranty of electrical and mechanical performance of the luminaires, including the LED boards, drivers, and auxiliary electronics. LumenWerx will repair or replace defective luminaires or components at our discretion, provided they have been installed and operated in accordance with our specifications. Other limitations apply, please refer to the full warranty on our website.

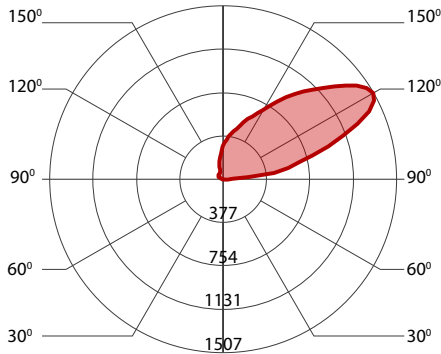
350 LUMEN AT 80CRI - ECO LOW OUTPUT



PERFORMANCE PER 4'

LED output	Color Temp	Watts	Nominal Delivered Lumens	Efficacy LPW
eco low output	2700K	11	1400	127
eco low output	2700K	12	1400	117
eco low output	3500K	11.5	1400	121
eco low output	4000K	11	1400	125

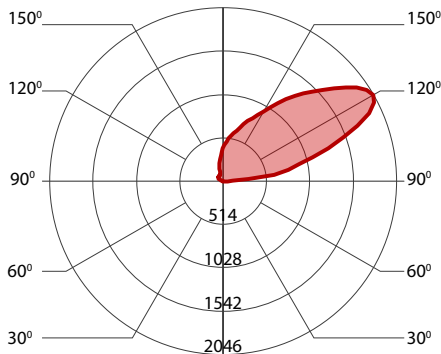
550 LUMEN AT 80CRI - LOW OUTPUT



PERFORMANCE PER 4'

LED output	Color Temp	Watts	Nominal Delivered Lumens	Efficacy LPW
low output	2700K	18	2200	123
low output	3000K	18.5	2200	118
low output	3500K	18	2200	122
low output	4000K	17.5	2200	126

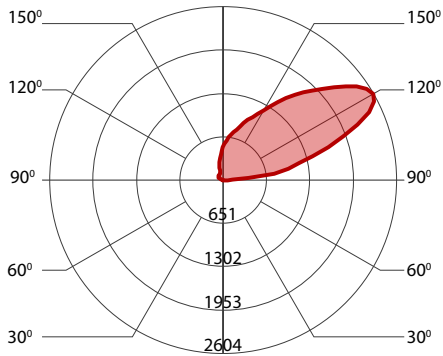
750 LUMEN AT 80CRI - MEDIUM OUTPUT



PERFORMANCE PER 4'

LED output	Color Temp	Watts	Nominal Delivered Lumens	Efficacy LPW
medium output	2700K	24	3000	126
medium output	3000K	26	3000	115
medium output	3500K	25	3000	119
medium output	4000K	24.5	3000	123

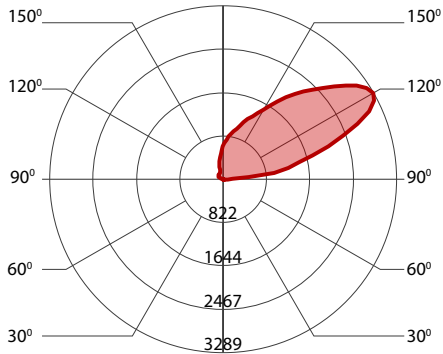
950 LUMEN AT 80CRI - HIGH OUTPUT



PERFORMANCE PER 4'

LED output	Color Temp	Watts	Nominal Delivered Lumens	Efficacy LPW
high output	2700K	31	3800	123
high output	3000K	33.5	3800	114
high output	3500K	32.5	3800	117
high output	4000K	31.5	3800	121

1200 LUMEN AT 80CRI - ULTRA HIGH OUTPUT



PERFORMANCE PER 4'

LED output	Color Temp	Watts	Nominal Delivered Lumens	Efficacy LPW
ultra high output	2700K	39.5	4800	121
ultra high output	3000K	43	4800	111
ultra high output	3500K	41.5	4800	115
ultra high output	4000K	40.5	4800	119