

BOX

STATIC WHITE, FULL SPECTRUM



Project: _____

Type: _____



DESCRIPTION

The Dot, Box, and Dot Cylinder are individual mounting systems that can be used on their own as solo lighting fixtures, or they can act as complements or supplements to Pivot track systems on a larger scale. Designed to be surface mounted on ceilings or walls, they are equipped with flat, conduit feed, or direct mount canopies, which can be round or square. See separate spec sheets for details.



Order Guide

LUMINAIRE ID	HEIGHT	FINISH	BAFFLE	BAFFLE FINISH
BOX2				
BOX2 - Box 2"	2.65IN - 2.65" 4IN - 4"	TMB - Matte black TMW - Matte white CF# - Custom finish, specify RAL # See page 4 for more finish options	SDB - Standard baffle DCB ¹ - Decorative baffle ¹ Recommended when a different finish is desired for the baffle.	TMB - Matte black TMW - Matte white CF# - Custom finish, specify RAL # See page 4 for more finish options

LIGHT SOURCE	BEAM ANGLE	CRI	LUMEN PACKAGE ³	COLOR TEMP.	VOLTAGE
SW - Static white FS - Full spectrum static white	20DEG - 20° Spot 35DEG - 35° Narrow flood 50DEG - 50° Wide flood	80CRI ² - 80+ CRI 90CRI ² - 90+ CRI 95CRI - 95+ CRI ² Not available with full spectrum.	2.65" height 1100LM - 1100 lm, 15.9 W 4" height 1100LM - 1100 lm, 15.9 W 1260LM - 1260 lm, 17.8 W ³ Lumen outputs are reduced with full spectrum, consult factory.	27K - 2700K 30K - 3000K 35K - 3500K 40K - 4000K	120V - 120V 277V - 277V UNV - 120V-277V

DRIVER ⁴	AIMABLE ARM ⁸	CANOPY	CANOPY FINISH Specify NA for DM					
<table border="1"> <thead> <tr> <th>CANOPY DRIVER</th> <th>REMOTE DRIVER</th> </tr> </thead> <tbody> <tr> <td>D1 - 1% 0-10V ELV⁵ - ELV 120V TRI⁵ - TRIAC 120V</td> <td>RD1 - 1% 0-10V RELV⁵ - ELV 120V RTRI⁵ - TRIAC 120V RLDE1⁶ - Lutron Hi-Lume 1% Eco</td> </tr> </tbody> </table> <p>⁴ PoE (Power-over-Ethernet) compatible. Consult factory for details. ⁵ Available with 120V only. ⁶ On-site commissioning is required. ⁷ For emergency battery, code will be like the following example: RDI+EB.</p>	CANOPY DRIVER	REMOTE DRIVER	D1 - 1% 0-10V ELV ⁵ - ELV 120V TRI ⁵ - TRIAC 120V	RD1 - 1% 0-10V RELV ⁵ - ELV 120V RTRI ⁵ - TRIAC 120V RLDE1 ⁶ - Lutron Hi-Lume 1% Eco	<p>RDA⁶ - DALI RELD0 - eldoLED 0.1% 0-10V RELD1 - eldoLED 1% 0-10V +EB⁷ - Emergency battery</p>	<p>FH - Flush ST3IN⁹ - 3" long stem ⁸ 90° tilt, 355 rotation. ⁹ Consult factory for longer stem lengths.</p>	<p>FLR - Flat round canopy, 4" octagonal junction box FLS - Flat square canopy, 4" octagonal junction box CDR - Conduit feed, round canopy CDS - Conduit feed, square canopy DM¹⁰ - Direct mount</p> <p>¹⁰ Available with remote driver only.</p>	<p>TMB - Matte black TMW - Matte white CF# - Custom finish, specify RAL# NA - Not applicable</p> <p>See page 4 for more finish options</p>
CANOPY DRIVER	REMOTE DRIVER							
D1 - 1% 0-10V ELV ⁵ - ELV 120V TRI ⁵ - TRIAC 120V	RD1 - 1% 0-10V RELV ⁵ - ELV 120V RTRI ⁵ - TRIAC 120V RLDE1 ⁶ - Lutron Hi-Lume 1% Eco							

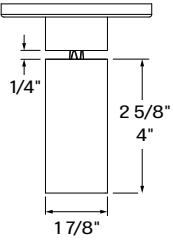
BOX

STATIC WHITE, FULL SPECTRUM

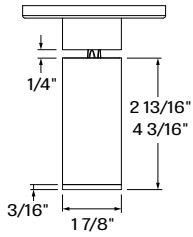


Dimensions

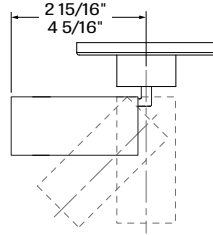
Flush Arm (shown with flat canopy option)



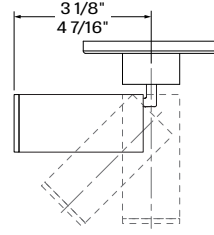
BOX2 - Box 2"
- Flush - Standard baffle



BOX2 - Box 2"
- Flush - Decorative baffle

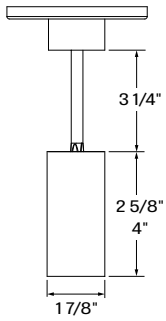


Maximum length
- Standard baffle - 90° tilt

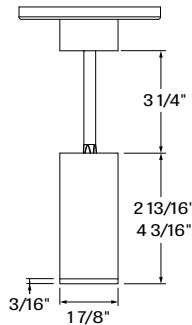


Maximum length
- Decorative baffle - 90° tilt

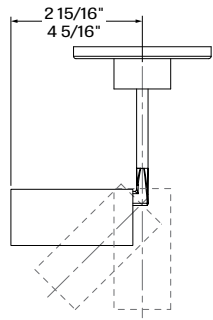
Stem (shown with flat canopy option)



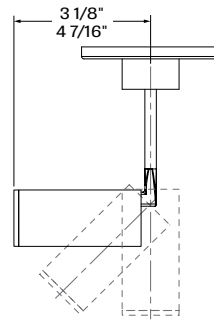
BOX2 - Box 2"
- Stem - Standard baffle



BOX2 - Box 2"
- Stem - Decorative baffle

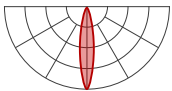


Maximum length
- Standard baffle - 90° tilt

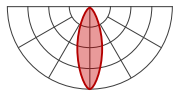


Maximum length
- Decorative baffle - 90° tilt

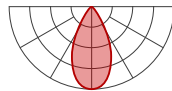
Photometrics



20DEG - 20° Spot



35DEG - 35° Narrow flood



50DEG - 50° Wide flood

Module Wattage (W)

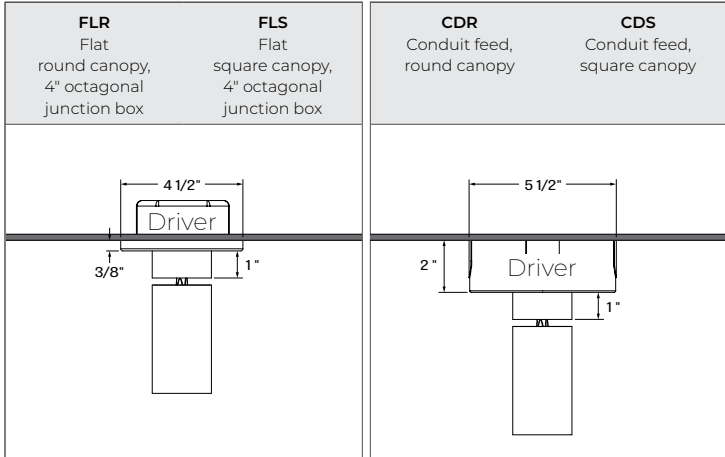
SIZE	HEIGHT	LUMEN PACKAGE at 3500K/80+ CRI	WATTAGE
2"	2.65", 4"	1100	15.9 W
	4"	1260	17.8 W

Multiplier - CCT/CRI

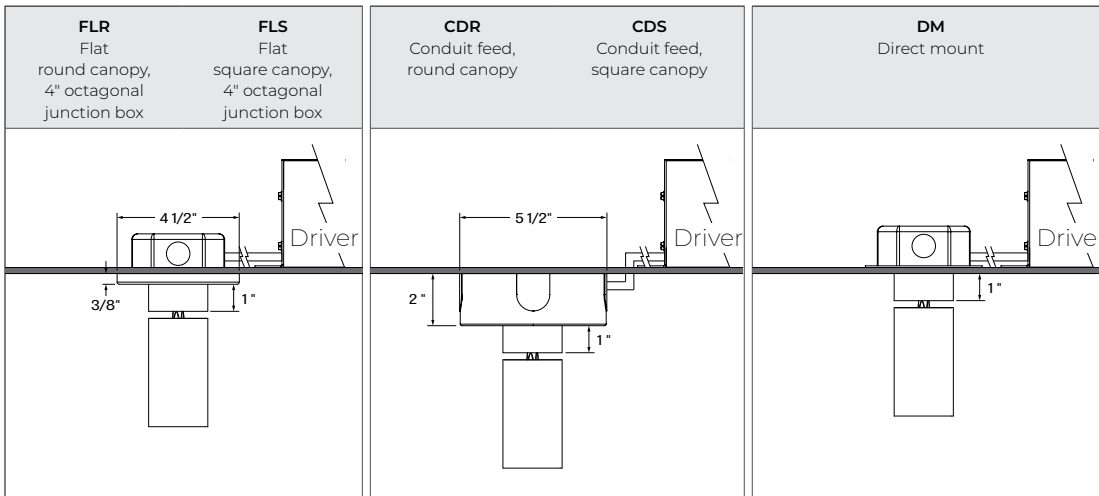
CCT	Lumens		
	80+ CRI	90+ CRI	95+ CRI
2700K	0.94	0.77	0.72
3000K	0.96	0.82	0.75
3500K	1.00	0.85	0.81
4000K	1.02	0.87	0.79

Mounting

Canopy driver

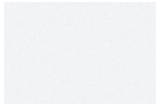


Remote driver



Finishes

Standard



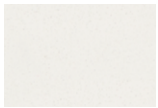
TMW - Matte White



TMB - Matte Black

Custom

Neutrals



CRM - Cream



GRY - Gray



STG - Steel Gray

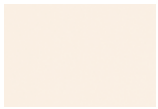


SAG - Sage Gray

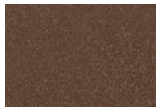


BLB - Black Blue

Designer



ALM - Almond



RST - Rust Fine
Texture



GRB - Green Beige



YLW - Yellow



SLM - Salmon Pink



VIO - Pastel Violet



RED - Red



PRR - Purple Red



SMB - Storm Blue



DPB - Deep Blue



OCB - Ocean Blue



BLG - Blue Green



GNS - Green Smoke



MNG - Mint Green

Metallics



CHP - Champagne



DBZ - Dark Bronze



CNY - Canyon

Premium Custom

Neutrals



MOG - Moss Gray



QRZ - Quartzite
Texture



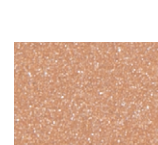
LMG - Lime Green



GLD - Gold



IRN - Iron Ore



SBP - Sandblast
Copper



SWD - Sandalwood

Some colors may have longer lead time.

Technical Specifications

OPTICS

CircaFlex™ Optic

The CircaFlex™ Optic, at just 1.2", uses advanced beam-splitting technology to allow light to follow an intended optical path with maximal precision, minimal spread, and even distribution.

LIGHT SOURCE

Static white

Compact COB (Chip-On-Board) LED module, available in 2700K, 3000K, 3500K and 4000K with a choice of 80+ CRI, 90+ CRI, or 95+ CRI, with elevated R9 value for 90+ CRI and above. Color consistency is maintained to within 2 SDCM. All LEDs have been tested in accordance with IESNA LM-80-08 and the results have shown L80 lumen maintenance greater than 60,000 hours. Absolute product photometry is measured and presented in accordance with IESNA LM-79, unless otherwise indicated.

Full spectrum static white

The full spectrum LED option offers improved color particularly in the cyan region that is beneficial in both healthcare and circadian lighting strategies. The cyan region in full spectrum LED is richer at the 480 nm range.



WELL for Light - The WELL building standard focuses on light quality in several features. There are three categories that are fully attributed to the construction and features of a luminaire. In WELL V1, it's Feature 54 Circadian Lighting, Feature 55 Glare Control, and Feature 58 Color Quality. In WELL V2, it's Feature L03 Circadian Lighting, Feature L04 Glare Control, and Feature L07 Electric Light Quality.

This fixture meets Features:

- Feature 54 or L03 when full spectrum LED is selected
- Feature 58 or L07 when 90+ CRI or above is selected

All LED drivers used at Lumenwerx are deemed to have a low risk level of flicker, of 5 % or less below 90Hz operational as defined by IEEE standard 1789-2015 LED.



WELL for Mind -This luminaire meets WELL for mind as it is a human centric luminaire offering quality light, excellent color, and smooth optics. If any of these features are incorporated in a luminaire, it can improve the ability to focus, concentrate, and persist longer on a given task. This fixture harmoniously operates in a space to assist the mind.

For more information, please contact well@lumenwerx.com

ELECTRICAL

Unless otherwise specified, dimming down to 1%. At maximum driver load: efficiency>84%, PF>0.9, THD<20%.

Canopy driver: 0-10V, ELV, TRIAC

Remote driver: 0-10V, ELV, TRIAC, Lutron Hi-Lume 1% EcoSystem, DALI, eidoLED 0.1% SOLOdrive 0-10V, eidoLED 1% ECOdrive 0-10V

Emergency Battery Option: Remotely-installed, long-life, high-temperature, maintenance-free, Bodine Lithium-Ion battery pack with self-test functionality, test switch and charge indicator. IOTA and Fulham options available upon request. Minimum of 90 minutes operation, and recharge time of 24 hours. For fixtures less than 10W, the battery provides 6W of emergency light output. For fixtures 10W and over, the battery provides 10W.

PoE

Depending on the PoE manufacturer selected, Lumenwerx will install the node in factory as either integral to the luminaire or as a remote module. Factory programming of the PoE node may or may not enable the following functionalities: lumen package, emergency battery backup, and sensor integration. These must be addressed and evaluated on a case-by-case basis.

CONSTRUCTION

Housing: Die-cast and extruded aluminum

Canopy: Flat, conduit feed and direct

Finish: Matte white and black. Custom colors also available (provide RAL #).

WEIGHT

SIZE	HEIGHT	WEIGHT	
2IN	2 5/8"	0.68 lb	0.31 kg
	4"	1.12 lb	0.51 kg

CERTIFICATION

ETL - Rated for indoor dry/damp locations. Conforms to UL Standard 1598 and certified to CAN/CSA Standard C22.2 No. 250.0.

WARRANTY

Lumenwerx provides a five-year limited warranty on electrical and mechanical performance of the luminaires, including the LED boards, drivers, and auxiliary electronics. Lumenwerx will repair or replace defective luminaires or components at our discretion, provided they have been installed and operated in accordance with our specifications. Other limitations apply, please refer to the full warranty on our website.