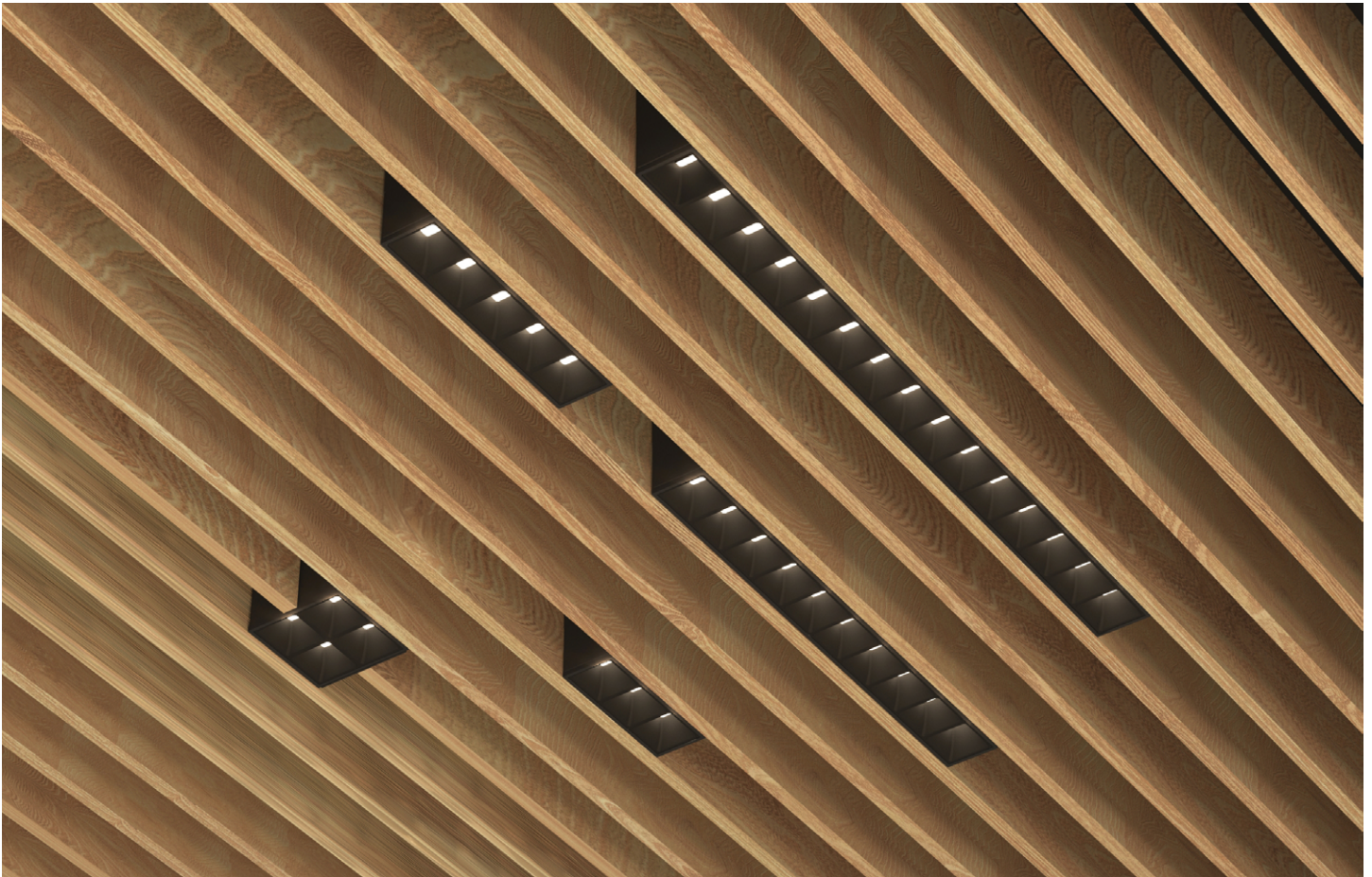


# CLUSTER WOOD SLAT

## RECESSED PARABOLIC



Cluster Wood Slat Recessed luminaires are a versatile group of downlights available in various configurations, designed for seamless installation in wood slat ceilings. With a choice of optics, including parabolic, wall wash, soft-edge, and sharp-edge options, these luminaires can address a wide variety of applications, delivering a clean, crisp aesthetic and precise, visually comfortable light.

### Light Source

Static White

SOLA

DUO



### Sizes



3x1



5x1



10x1



15x1



2x2

### Cluster Family (Refer to other spec sheets)

#### Recessed, Wood Slat



Downlight Parabolic Wall Wash

#### Recessed Adjustable



Downlight Parabolic Wall Wash

#### Pendant



Downlight Parabolic Wall Wash

#### Surface



Downlight Parabolic Wall Wash

#### Combo



Recessed Pendant Surface

#### Acoustix



Blank Downlight Parabolic

# CLUSTER WOOD SLAT

## RECESSED PARABOLIC



Project: \_\_\_\_\_

Type: \_\_\_\_\_

### Order Guide

LUMINAIRE ID	INSTALLATION TYPE	MOUNTING OPTION <sup>1</sup>	LIGHT SOURCE	OPTIC	CRI
	<b>OFB</b>			<b>PAR</b>	<b>90CRI</b>
<b>CLU03WSRPAR</b> - Cluster 3x1 Wood Slat Recessed Parabolic <b>CLU05WSRPAR</b> - Cluster 5x1 Wood Slat Recessed Parabolic <b>CLU10WSRPAR</b> - Cluster 10x1 Wood Slat Recessed Parabolic <b>CLU15WSRPAR</b> - Cluster 15x1 Wood Slat Recessed Parabolic <b>CLU22WSRPAR</b> - Cluster 2x2 Wood Slat Recessed Parabolic	<b>OFB</b> - Open Frame Type Non-IC, black	<b>BAB24</b> - Black adjustable bar hangers, 17" to 24" <b>BAB48</b> - Black adjustable bar hangers, 30" to 48"  <sup>1</sup> See page 4 for more details.	<b>SW</b> - Static white  <b>SOLA</b> <sup>2</sup> - Dim-to -warm single channel control 35K to 22K <b>DUO</b> <sup>2</sup> - Tunable white 2-channel control 65K to 27K  <sup>2</sup> Not available with integral driver option.	<b>PAR</b> - Parabolic	<b>90CRI</b> - 90+ CRI

COLOR TEMP.	ADJUSTABLE BRACKET FINISH	LOUVER FINISH	DRIVER	VOLTAGE	LUMEN PACKAGE <sup>4</sup>	DIMMING								
<b>27K</b> - 2700K <b>30K</b> - 3000K <b>35K</b> - 3500K <b>40K</b> - 4000K <b>50K</b> - 5000K  <b>SOLA</b> - Dim-to -warm single channel control 35K to 22K <b>DUO</b> - Tunable white 2-channel control 65K to 27K	<b>FTMW</b> - Matte white <b>FTMB</b> - Matte black <b>CF#</b> - Custom finish, specify RAL#	<b>MWPL</b> - Matte White Parabolic Louver <b>MBPL</b> - Matte Black Parabolic Louver <b>MPL</b> - Matte Silver Parabolic Louver <b>SPL</b> - Specular Parabolic Louver	<b>INTEGRAL</b> <sup>3</sup>  <sup>3</sup> Not available with 2x2.	<b>120V</b> - 120V <b>277V</b> - 277V <b>UNV</b> - 120V-277V	<table border="1"> <tr> <td>3x1</td> <td><b>584LM</b> - 584 lm</td> </tr> <tr> <td>5x1</td> <td><b>957LM</b> - 957 lm</td> </tr> <tr> <td>10x1</td> <td><b>1896LM</b> - 1896 lm</td> </tr> <tr> <td>15x1</td> <td><b>2844LM</b> - 2844 lm</td> </tr> </table> <sup>4</sup> Lumen packages shown at 3500K, with SPL. For other, see lumen output multipliers on page 5.	3x1	<b>584LM</b> - 584 lm	5x1	<b>957LM</b> - 957 lm	10x1	<b>1896LM</b> - 1896 lm	15x1	<b>2844LM</b> - 2844 lm	<b>D1</b> - 1% 0-10V <b>ELV</b> <sup>5</sup> - ELV 120V <b>TRI</b> <sup>5</sup> - TRIAC 120V  <sup>5</sup> Available with 120V only.
3x1	<b>584LM</b> - 584 lm													
5x1	<b>957LM</b> - 957 lm													
10x1	<b>1896LM</b> - 1896 lm													
15x1	<b>2844LM</b> - 2844 lm													
			<b>REMOTE</b>	<b>DO NOT SPECIFY FOR REMOTE. SEE "REMOTE DRIVER BOX" SECTION BELOW.</b>										

### Remote Driver Box

Ordered separately. Specify each required remote driver box on a separate line.

REMOTE DRIVER <sup>6</sup>	LUMINAIRE QTY. <sup>7</sup>	LUMINAIRE ID	VOLTAGE	LUMEN PACKAGE <sup>8</sup>	DIMMING <sup>9</sup>		
<b>RDB#</b> - Remote driver box  <sup>6</sup> Specify each required remote driver box on a separate line.	<b>#X</b> - Number of luminaires  <sup>7</sup> Specify number (#) of luminaires per remote driver. See page 5 for minimum and maximum per driver.	<b>CLU03WSRPAR</b> - Cluster 3x1 Wood Slat Recessed Parabolic <b>CLU05WSRPAR</b> - Cluster 5x1 Wood Slat Recessed Parabolic <b>CLU10WSRPAR</b> - Cluster 10x1 Wood Slat Recessed Parabolic <b>CLU15WSRPAR</b> - Cluster 15x1 Wood Slat Recessed Parabolic <b>CLU22WSRPAR</b> - Cluster 2x2 Wood Slat Recessed Parabolic	<b>120V</b> - 120V <b>277V</b> - 277V <b>UNV</b> - 120V-277V	Low	<b>RD1</b> - 1% 0-10V <b>RELV</b> <sup>10,11</sup> - ELV 120V <b>RTRI</b> <sup>10,11</sup> - TRIAC 120V <b>RDA</b> <sup>12</sup> - DALI <b>RLDE1</b> <sup>12</sup> - Lutron Hi-lume 1% Eco <b>RELD1</b> - eldoLED 1% ECOdrive 0-10V <b>RELD0</b> - eldoLED 0.1% SOLOdrive 0-10V		
				Medium	<b>SOLA</b> <b>RSD1</b> - Single 0-10V input  <b>DUO</b> <b>RDMX</b> <sup>12</sup> - DMX <b>RDDA</b> <sup>12</sup> - DALI DT6 <b>RDDA8</b> <sup>12</sup> - DALI DT8 <b>RDD1</b> - Dual 0-10V input for CCT/Intensity <b>RLD2</b> <sup>12</sup> - Lutron DALI-2 digital		
				High	<sup>9</sup> For configurations involving different cluster sizes on a remote driver, please consult factory. <sup>10</sup> Available with 120V only. <sup>11</sup> Only available with high lumen packages. <sup>12</sup> On-site commissioning is required.		
				3x1	<b>200LM</b> - 200 lm	<b>365LM</b> - 365 lm	<b>584LM</b> - 584 lm
				5x1	<b>239LM</b> - 239 lm	<b>598LM</b> - 598 lm	<b>957LM</b> - 957 lm
				10x1	<b>474LM</b> - 474 lm	<b>1185LM</b> - 1185 lm	<b>1896LM</b> - 1896 lm
				15x1	<b>711LM</b> - 711 lm	<b>1778LM</b> - 1778 lm	<b>2844LM</b> - 2844 lm
				2x2	<b>184LM</b> - 184 lm	<b>460LM</b> - 460 lm	<b>735LM</b> - 735 lm

### EXAMPLE

HOUSING + LIGHT	CLU03WSRPAR-OFB-BAB24-SW-PAR-90CRI-35K-FTMB-MBPL-REMOTE	REMOTE DRIVER BOX	RDB1-2X-CLU03WSRPAR-120V-200LM-RD1 RDB2-1X-CLU03WSRPAR-120V-200LM-RD1
-----------------	---	-------------------	--

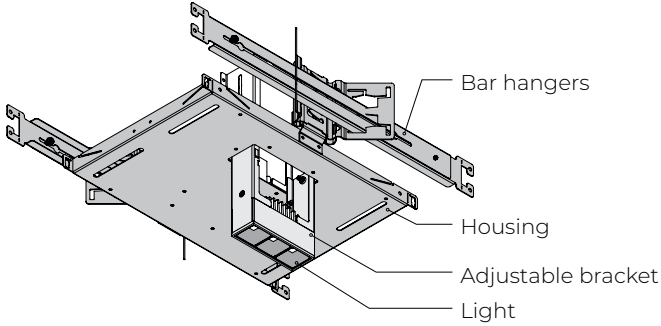


# CLUSTER WOOD SLAT

## RECESSED PARABOLIC



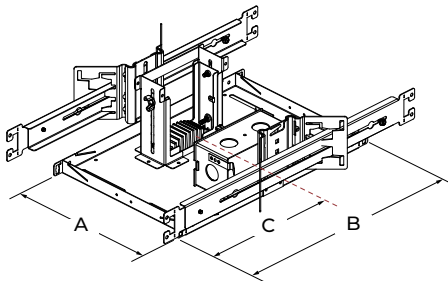
### Overview



- Housing**
  - OFB
  - Black housing
- Adjustable bracket**
  - ADJUSTABLE BRACKET FINISH
  - Matte white
  - Matte black
- Bar hangers**
  - BAB24
  - Black adjustable bar hangers, 17" to 24"
  - BAB48
  - Black adjustable bar hangers, 30" to 48"
- Light**
  - LOUVER FINISH
  - Matte white
  - Matte black
  - Matte
  - Specular

### Housing

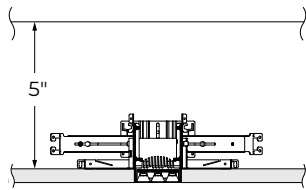
#### INSTALLATION TYPE



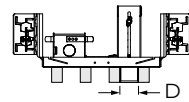
OFB - Open Frame

	HOUSING		
	A	B	C
<b>3x1</b>	8 11/16"	13 5/16"	6 11/16"
<b>5x1</b>	8 11/16"	13 5/16"	6 11/16"
<b>10x1</b>	8 11/16"	19 5/16"	9 11/16"
<b>15x1</b>	8 11/16"	25 5/16"	12 11/16"
<b>2x2</b>	9 9/16"	13 1/8"	4 7/8"

#### DIMENSIONS

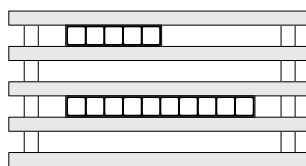


Clearance height

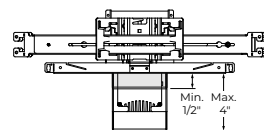


Spacing between slats

	SPACING BETWEEN SLATS	
	D	
	INTEGRAL (access from below the ceiling)	INTEGRAL / REMOTE (access from above the ceiling)
<b>3x1</b>	NA	1 1/2"
<b>5x1</b>	1 3/4"	1 1/2"
<b>10x1</b>	1 3/4"	1 1/2"
<b>15x1</b>	1 3/4"	1 1/2"
<b>2x2</b>	NA	2 5/8"



Bottom view



Cluster height



# CLUSTER WOOD SLAT

## RECESSED PARABOLIC



### Housing

MOUNTING OPTION	
<p style="text-align: center;">17" to 48"</p>	<p><b>BAB24</b> - Black adjustable bar hangers, 17" to 24"  <b>BAB48</b> - Black adjustable bar hangers, 30" to 48"</p> <p>Black adjustable bar hangers can be used in both commercial and residential applications and are by far the most versatile mounting bar we offer with its adjustability to various heights. BAB hangers are suitable for Grid Ceiling, Drywall, Metal, Wood and Frame mounting.</p> <ul style="list-style-type: none"> <li>• Extremely rigid</li> <li>• Fits into C-Channel notches in a Butterfly Bracket</li> </ul>

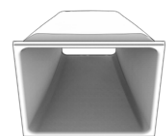
### Light

#### DIMENSIONS

SIZE	Diagram
3x1	
5x1	
10x1	
15x1	

SIZE	Diagram
2x2	

#### OPTIC



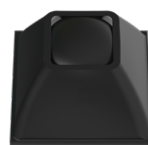
**PAR** - Parabolic louvers

#### LOUVER FINISHES

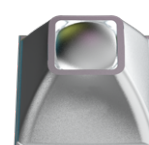
Louvers are injection molded with integral texture and color.



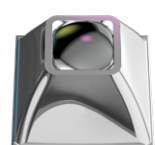
**MWPL** - Matte White Parabolic Louver



**MBPL** - Matte Black Parabolic Louver



**MPL** - Matte Silver Parabolic Louver



**SPL** - Specular Parabolic Louver



# CLUSTER WOOD SLAT

## RECESSED PARABOLIC

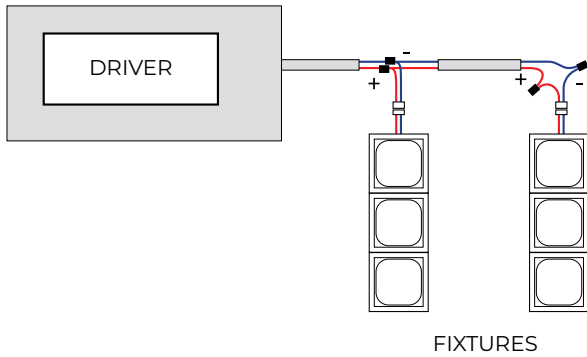


### Driver

#### REMOTE DRIVER

The remote driver can power several lighting units, depending on their total power. The minimum and maximum number of lighting units and driver type are shown in the table below and must be observed. The remote driver and lighting units are wired together through connection boxes, which are furnished pre-wired to the driver enclosure. All wiring is Class 2 with quick-splice connectors. The remote driver requires access from above the ceiling (or an access panel).

CONNECTION IN PARALLEL



Number of lighting units per driver (minimum and maximum).

Static white	3x1	5x1	10x1	15x1	2x2
RD1	1-12	1-6	1-3	1-2	1-6
RELV	1-6	1-3	1	1	1-3
RTRI	1-6	1-3	1	1	1-3
RDA	1-11	1-6	1-3	1-2	1-6
RLDE1	1-11	1-6	1-3	1-2	1-6
RELD1	1-11	1-6	1-3	1-2	1-6
RELD0	1-11	1-6	1-3	1-2	1-6

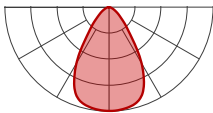
SOLA	3x1	5x1	10x1	15x1	2x2
RSD1	1-7	1-4	1-2	1	1-4

DUO	3x1	5x1	10x1	15x1	2x2
RDMX	1-7	1-4	1-2	1	1-4
RDDA	1-7	1-4	1-2	1	1-4
RDDA8	1-7	1-4	1-2	1	1-4
RDD1	1-7	1-4	1-2	1	1-4
RLD2	2-7	1-4	1-2	1	1-4

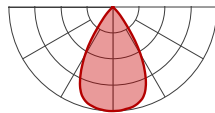
- For any quantities of lighting units per driver that fall outside the minimum and maximum listed above, please consult factory.  
 - These ranges are for the high output. Please consult factory for ranges with low or medium output.

### Photometrics

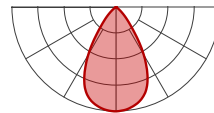
Values calculated based on 3500K, 90+ CRI, SPL.



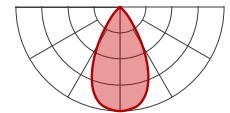
MWPL - Matte White Parabolic Louver



MBPL - Matte Black Parabolic Louver



MPL - Matte Silver Parabolic Louver



SPL - Specular Parabolic Louver

	LM	W	LM/W
3x1	584	7.3	80
5x1	957	11.5	83
10x1	1896	23.2	82
15x1	2844	34.8	82
2x2	735	9.5	78

#### MULTIPLIER TABLE

Please follow the multiplier table to ensure correct lumen value. CCT and louver finishes will change the lumen value.

CCT	LPW			
	MWPL	MBPL	MPL	SPL
2700K	0.94	0.58	0.81	0.94
3000K	0.97	0.6	0.83	0.97
3500K	1	0.62	0.86	1
4000K	1.02	0.63	0.88	1.02
5000K	1.06	0.66	0.91	1.06



# CLUSTER WOOD SLAT

## RECESSED PARABOLIC



## Technical Specifications

### OPTICS

#### Parabolic Louvers (MWPL, MBPL, MPL, SPL)

Parabolic louver optics provide excellent shielding and a pleasing crisp visual texture. The precisely molded louvers consist of 1" deep blades and side reflectors with shielding of 50° lengthwise and 45° crosswise.

The parabolic contour of the blades and side reflectors direct light into a comfortable downlight distribution with a spacing criterion of 1:1, while minimizing shadows from the LED array above each cell.

Four finishes are available. Specular (SPL) provides higher efficacy, sharper cut-off, and an ultra-quiet appearance at shallow viewing angles. Matte silver (MPL) offers a softer appearance, a wider beam spread, and gentle brightness transition at cut-off. Matte white (MWPL) creates the highest louver brightness, while matte black (MBPL) provides a dark appearance with slightly reduced beam spread.

### LIGHT SOURCE

#### Static white

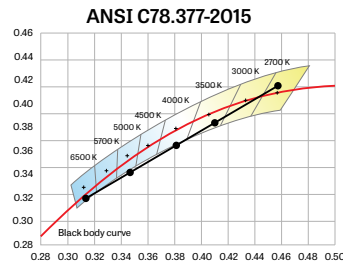
Custom array of mid-flux LEDs mounted onto aluminum-backed circuitry. Available in 2700K, 3000K, 3500K, 4000K, and 5000K with a minimum 90+ CRI with elevated R9 value. Color consistency is maintained to within 3 SDCM. All LEDs have been tested in accordance with IESNA LM-80-08 and the results have shown L80 lumen maintenance greater than 60,000 hours. Absolute product photometry is measured and presented in accordance with IESNA LM-79, unless otherwise indicated.

#### Chromawerx SOLA

It is a single-channel control that dims output while warming the color temperature in a pre-determined relationship. A simple analog control sends a common signal to dual output digital drivers, which are programmed to adjust a specially populated LED array to emulate the effect of dimming a filament source. Dimming range is programmable but the default option runs from 3500K at 100% of full power to 2200K at 5% of full power. CRI is maintained above 80 throughout the dimming range.

#### Chromawerx DUO

It is a two-channel control. It uses an analog (0-10V) protocol for separate control of luminaire CCT and intensity or a digital (DMX, DALI, and LD2) protocol for synchronous control of both warm and cool LED arrays to enable the user to set color temperature and light output. Commonly called "tunable white", Chromawerx two-channel control provides the range of cool (6500K) to warm (2700K) color that can be useful for helping to entrain circadian rhythms, stimulate alertness for improved educational and work productivity, and compensate for jet lag, among other applications. The Chromawerx drivers are programmed to limit maximum light output and power usage across all color temperatures. CRI is maintained above 80. When paired with DALI drivers (DDA/DDA8), color tuning follows a linear dimming curve.



### ELECTRICAL

Unless otherwise specified, dimming down to 1%. At maximum driver load: efficiency > 84%, PF > 0.9, THD < 20%. ELV and TRIAC dimming performance (including minimum dimming percentage) subject to dimmer selection.

**Integral:** 0-10V, ELV, TRIAC

**Remote:** 0-10V, ELV, TRIAC, Lutron Hi-Lume 1% EcoSystem, DALI, eldoLED 0.1% SOLOdrive 0-10V, eldoLED 1% ECOdrive 0-10V, DMX, Lutron DALI-2 digital

### PoE

Depending on the PoE manufacturer selected, Lumenwerx will install the node in factory as either integral to the luminaire or as a remote module. Factory programming of the PoE node may or may not enable the following functionalities: lumen package, DUO (tunable white), QUADRO (RGBW), emergency battery backup, and sensor integration. These must be addressed and evaluated on a case-by-case basis.

# CLUSTER WOOD SLAT

## RECESSED PARABOLIC



### CONSTRUCTION

**Housing:** Die-cast aluminum

**Optics:** Polycarbonate

**Mounting frame:** Galvanized sheet metal

**Driver housing:** Galvanized sheet metal

### WEIGHT

	OFB
<b>3x1</b>	5.47 lbs - 2.48 kg
<b>5x1</b>	5.7 lbs - 2.58 kg
<b>10x1</b>	6.88 lbs - 3.12 kg
<b>15x1</b>	7.68 lbs - 3.48 kg
<b>2x2</b>	5.81 lbs - 2.64 kg

### CERTIFICATION

**ETL:** Rated for indoor dry/damp locations. Conforms to UL 1598 Standard and certified to CAN/CSA Standard C22.2 No. 250.0.

### WARRANTY

Lumenwerx provides a five-year limited warranty on electrical and mechanical performance of the luminaires, including the LED boards, drivers, and auxiliary electronics. Lumenwerx will repair or replace defective luminaires or components at our discretion, provided they have been installed and operated in accordance with our specifications. Other limitations apply, please refer to the full warranty on our website.