

### INSTALLATION INSTRUCTIONS

**!** This product must be installed in accordance with the National Electrical Code and all applicable local codes, by a person familiar with the construction and operation of the product, and the hazards involved. Proper grounding is required for safety.

Ce produit doit être installé suivant le code national de l'électricité, ainsi que tous les codes locaux applicables, par une personne familière avec la construction et le fonctionnement du produit, ainsi que tous les risques qui y sont associés. La mise à terre électrique est obligatoire pour la sécurité.

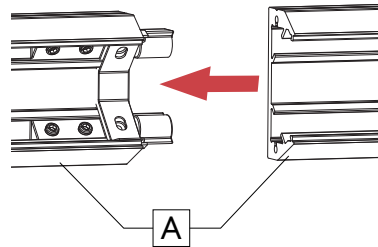
**!** Disconnect power before installation or servicing.

**!** Wire dimming conductors as Class 1.

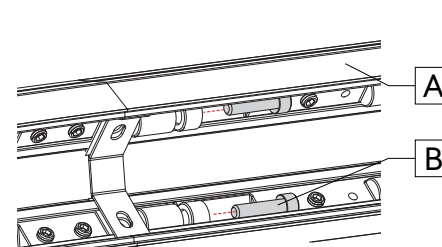
**!** A luminaire with more than one power supply connection means shall be connected to only one branch circuit.

#### 1 MOUNT FIXTURE.

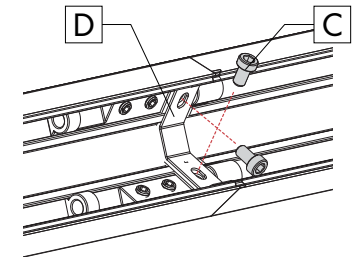
Align the fixtures **[A]** and slide the fixture **[A]** to the other fixture **[A]**.



Fix the fixtures **[A]** with two screws **[B]**.

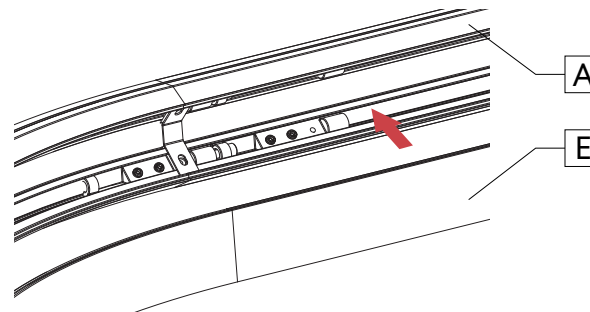


Tighten the two screws **[C]** to the joiner **[D]**.



#### 2 INSTALL LENS.

Install the lens **[E]** on the fixture **[A]**.



#### 3 INSTALL FIXTURE.

Refer to your Elia installation sheet to complete the installation.