

Lumenwerx 

# Aera

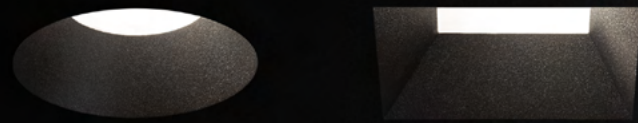
A NEW ERA IN DOWNLIGHTS,  
CYLINDERS, AND MULTI-APERTURES



# Aera Collection

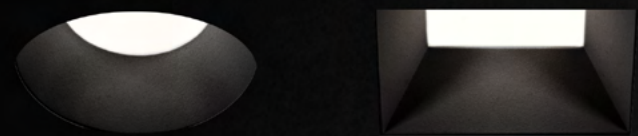
## THE DOWNLIGHT COLLECTION THAT DOES IT ALL.

Encased in minimalist housing that complements their high-performance capabilities, the Aera Collection brings a touch of elegance to any space, featuring simple shapes, refined colors, and innovative technologies that blend style with functionality.



### AERA DOWNLIGHTS

2", 3", 4" apertures, minimalist form and outstanding performance



### AERA SHALO

Aera Shalo — 2" housing height, 2", 3", 4" apertures, no compromise in performance



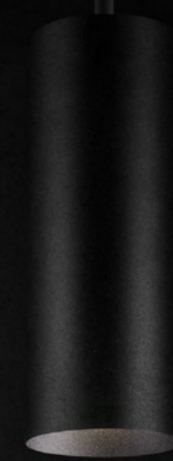
### AERA DEEP

2", 3" apertures, deep baffle, prism or smooth option, precision-engineered for low glare



### AERA CUBOID

2", 3", 4" apertures, cuboid design with exceptional performance and glare control



### AERA INFLEX

2", 3", 4" apertures, internal tilting and rotational adjustability



### AERA FLEX

3" aperture, external tilting and rotational adjustability



### AERA CYLINDERS

2", 3", 4", 5", 6" apertures, minimalist design with high performance and visual comfort



Declare



# Index

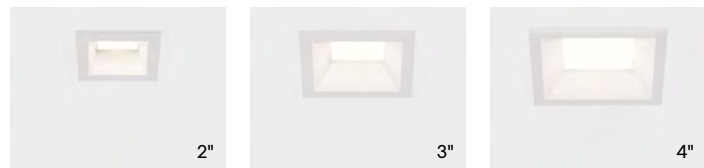
## DOWNLIGHTS

Aera Shalo  
p.08

ROUND

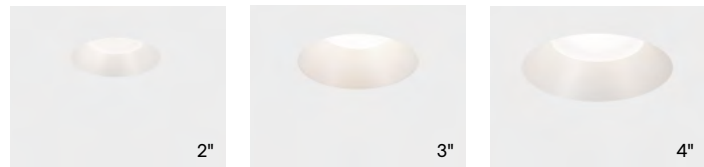


SQUARE

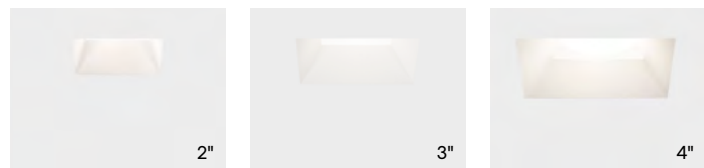


Aera  
p.16

ROUND



SQUARE

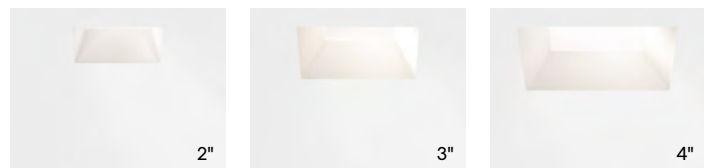


Aera Adjustable  
p.18

ROUND



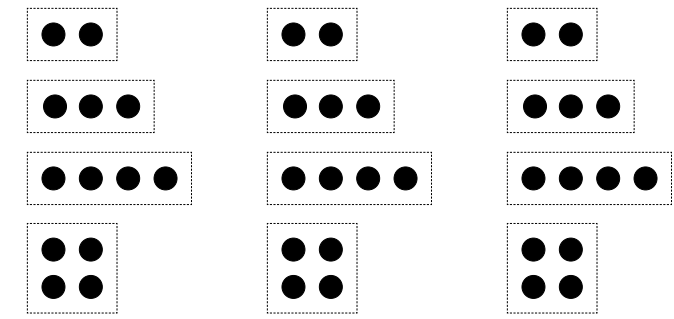
SQUARE



Aera  
Multi-Apertures  
p.24



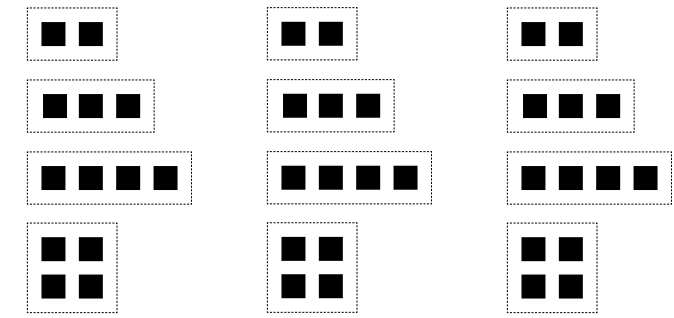
ROUND



2" 3" 4"



SQUARE



2" 3" 4"

Aera Wall Wash  
p.26

ROUND

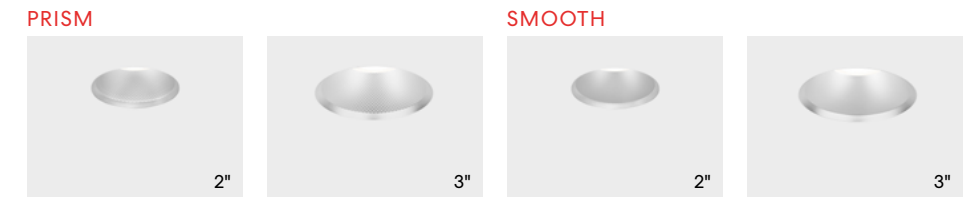


SQUARE



Aera Deep  
p.36

ROUND



SQUARE





# Index

## CYLINDERS

Aera  
p.40



Aera  
Wall Wash  
p.48



Aera Inflex  
p.50  
INTERNALLY  
ADJUSTABLE



Aera Flex  
p.54

ADJUSTABLE



Aera Seal  
p.60



Product: Aera 3 cylinder  
Design: Syllable Inc.  
Photography: Arnaud Marthouret  
Date: 2023





# Aera Shalo



2"



3"



4"



Aera Shalo extends the versatility of the Aera family to shallow ceiling applications, delivering uncompromised performance in a remarkably slim form factor. At only 2" in height, Aera Shalo fixtures preserve the family's hallmark optical precision, quiet-ceiling aesthetic, and below-ceiling serviceability across 2", 3", and 4" apertures.

**APERTURES**

2", 3", 4"

**SHAPES**

Round  
Square

**INSTALLATION TYPE**

New Construction  
IC-rated / Non-IC-rated  
Chicago Plenum (CCEA)

**LIGHT DISTRIBUTION**

Fixed  
Adjustable  
Wall Wash

**MAINTENANCE**

Easy, Below-Ceiling  
Access and Serviceability

Field-interchangeable  
Distributions, Optics  
and Trims



# No More Plenum Limits

At only 2" in height, Aera Shalo preserves the performance and flexibility that define Aera—even where space is limited.

Featured Products:  
Aera Shalo 3", Adjustable, Trimless  
Via Slim 2, Pendant



# Aera Shalo

## EVERY DETAIL, ENGINEERED

Aera Shalo combines compact engineering with full capability, offering a comprehensive range of aperture sizes, shapes, baffles, distributions, and other features designed to meet diverse architectural needs while delivering optimal visual comfort.

### APERTURES & SHAPES



### FIXED



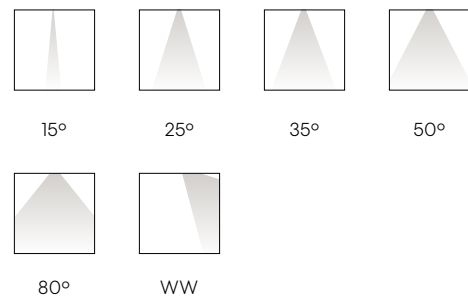
Fixed Light Module

### ADJUSTABLE



Adjustable Light Module with 30° Tilt and Infinite Rotation

### BEAM ANGLES

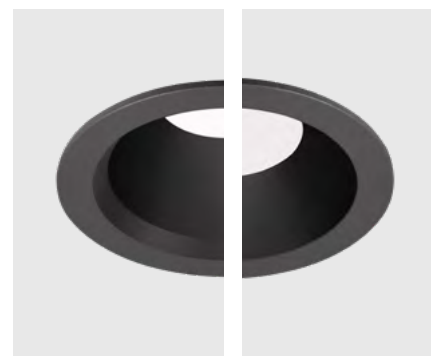


### WALL WASH



Wall Wash available with Flanged or Trimless trim options.

### BAFFLE OPTIONS



Deep Baffle (1 1/8") Standard Baffle (7/8")

2" HOUSING HEIGHT

Ceiling Thickness up to 1"

Two collar sizes — 0.5" and 1" to match ceiling depth and ensure a flush fit. Maximum overall fixture height: 3".

Light Module: Tool-Free Access. Endless Flexibility.

Self-contained light module with integrated LED source, magnetic connection (CoreConnect™ Technology) and tool-free locking design providing easy field serviceability. It enables swapping distributions between fixed, adjustable, and wall wash or interchanging beam angles on site.



### Optic Flexibility

15°, 25°, 35°, 50°, 80°, 90° and wall wash options. Field replaceable optics.

### Light Module Accessories

- Hex Louver
- Spread Lens
- Frosted Diffused Lens
- Soft Diffused Lens

### Baffle Lens

- Clear Lens
- Frosted Diffused Lens
- Soft Diffused Lens

### Trims & Baffle Options

Flanged, Trimless, Deep Baffle, Wall Wash, Cut Cone, and IP44 Wet Location options—all precision die-cast and perfectly aligned with the Aera Collection's trims and finishes.





# Unlimited Adaptability

## FUTURE-PROOF MODULAR DESIGN

Aera Shalo's modular, field-serviceable design makes every component accessible from below the ceiling, trims, optics, and driver included. Its ultra-slim housing and optical module enable tool-free distribution swaps from fixed to adjustable to wall wash, with field-interchangeable optics and trims for added versatility. Built for longevity, Aera Shalo embodies true future-proof performance and is aligned with our Greenwerx™ commitment to sustainable lighting solutions.

## OPTICAL FLEXIBILITY

### Field Interchangeable Optics and Trims

## DISTRIBUTIONS

Easy Swap from Fixed to Adjustable to Wall Wash Distributions

## MAINTENANCE

Serviceable Driver Access

Modular Design



## EFFORTLESS MAINTENANCE

Aera Shalo's modular, field-serviceable design makes every component accessible from below the ceiling, trims, optics, and driver included.



## CORECONNECT™ TECHNOLOGY

Aera Shalo's Light Module uses CoreConnect™ Technology, a magnetic, wire-free system that enables fast, secure connection and complete field serviceability.



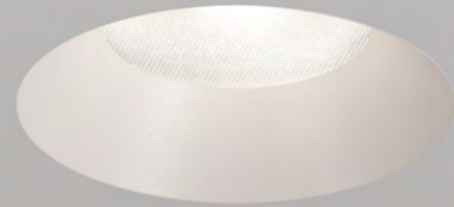
## SIMPLE TOOL-FREE OPTIC OR DISTRIBUTION REPLACEMENT

Easily replace optics or switch between fixed, adjustable, and wall wash distributions directly from below the ceiling.



## BELOW-CEILING SERVICEABLE DRIVER

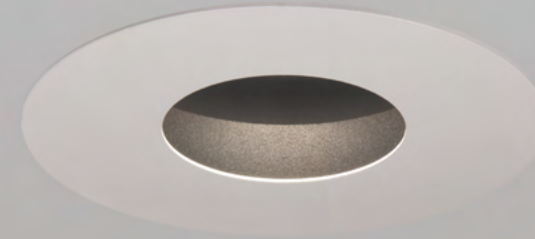
The driver is fully accessible and serviceable from below the ceiling, ensuring easy maintenance and future ready performance.



Beveled  
Trimless



Beveled  
Flanged Trim



Pinhole  
Flanged Trim



Wall wash  
Trimless

# Aera Downlights

Aera downlights are true to size and exude a minimalist aesthetic. They deliver outstanding performance, maximal eye comfort, and an industry-leading wall wash. Their versatility is unparalleled, with countless features and options to address any lighting project.

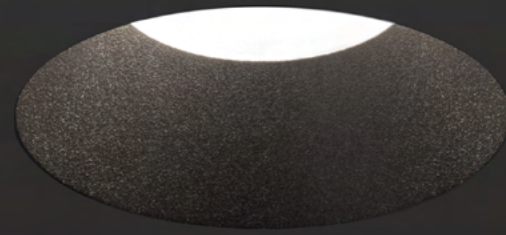


Downlights: Aera 4", round, trimless  
Cylinders: Aera 4", surface

Aera's **sophisticated design** matches its impressive performance while revealing the **beauty** of architectural form.



Declare

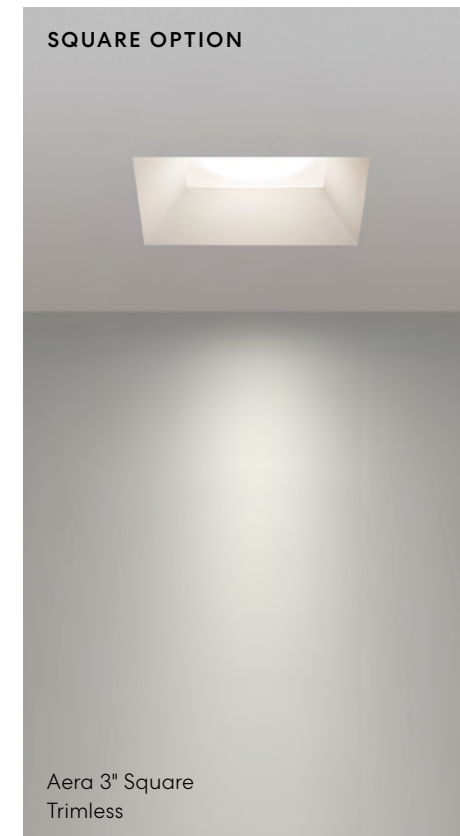


Aera 3" Round  
Trimless



# Aera 2, 3, 4 Downlights

Aera downlights are optically equipped with proprietary XPoint™ Refraction Technology. They deliver high performance, low glare, and zero spill light on their bevels or trims. They showcase advanced design detail and construction and can be made-to-measure with a host of options.



SQUARE OPTION

Aera 3" Square  
Trimless

TRUE TO SIZE DIAMETERS

2", 3", 4"

113 lm/W

Round, Square  
& Multi-Aperture

Adjustable,  
Fixed, Wall Wash,  
& Asymmetric

Field  
interchangeable  
optics

Low  
UGR < 10 in  
all beams

CERTIFICATIONS

Declare Label,  
Energy Star,  
IP44 Shower Rated,  
California JA Title 24  
Compliant



Aera 3" Square Flanged Trim

The square aperture creates **clean and crisp lines** of light, adding a **contemporary touch**.



Aera 3"  
Multiple-Apertures,  
Trimless



# Aera 2, 3, 4 Multi- Apertures

## Downlights

Aera multi-aperture fixtures have within the same housing a combination of 2, 3 or 4 modules, each of which can be specified individually with different combinations of distributions, beam angles, lenses, etc. Multi-apertures can address simultaneous applications through a single luminaire.

### DIAMETERS

2", 3" & 4"

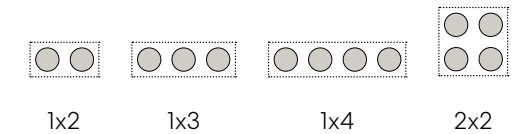
### SHAPES

Round and Square

Adjustable, Fixed,  
Wall Wash

2 to 4  
individually  
customizable  
modules in  
one fixture

### CONFIGURATIONS



1x2

1x3

1x4

2x2



# Aera 2, 3, 4 Wall Wash

## Downlights

Aera offers excellent performance in wall wash application with a 3.42:1 uniformity ratio to create beautiful, smooth lighting effects without hot spots or shadows.

Aera wall wash is available in downlights and cylinder versions of the family and offered in 2", 3" and 4" apertures.

### SIZES

2", 3", 4"

3.42:1

Uniformity Ratio\*

\*Aera 3" wall wash, 36" spacing, 24" set-back, 9' wall height.



Aera 4" Round  
Wall wash, Trimless



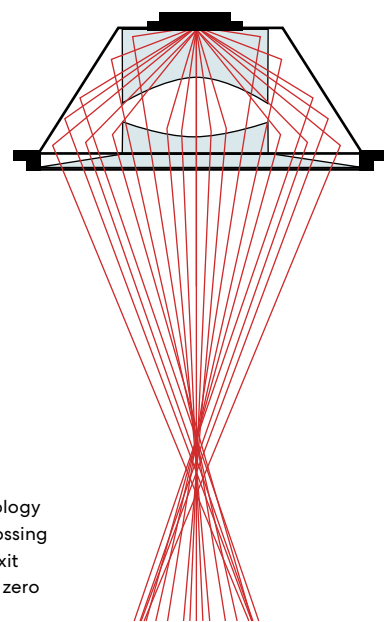
Aera 4" Square  
Wall wash, Trimless



# Our most innovative optic technology

## XPoint™ Refraction

Our XPoint™ Refraction Technology integrated in Aera downlights and cylinders is a powerful optic for creating clean, quality beams of light without spill. Its micro-optical paths direct the light emitted from the COB (Chip On Board) to intersect and disperse perfectly in a specific direction for each beam angle. The resulting illumination is precise, soft and visually comfortable.



XPoint™ technology enables crisscrossing light paths to exit the fixture with zero spill light

UP TO

113 lm/W

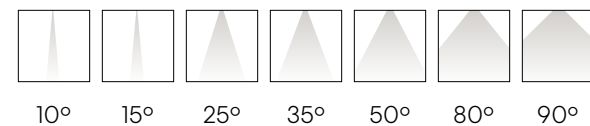
Low UGR < 10 in all beams

UP TO

95 CRI

L90 at 150,000 hours

Field interchangeable optics



Aera 3 Cylinder, close-up view of XPoint™ Refraction



# Installation Options

## Downlights

### PLENUM CLEARANCE

As low as  
2" 5/8

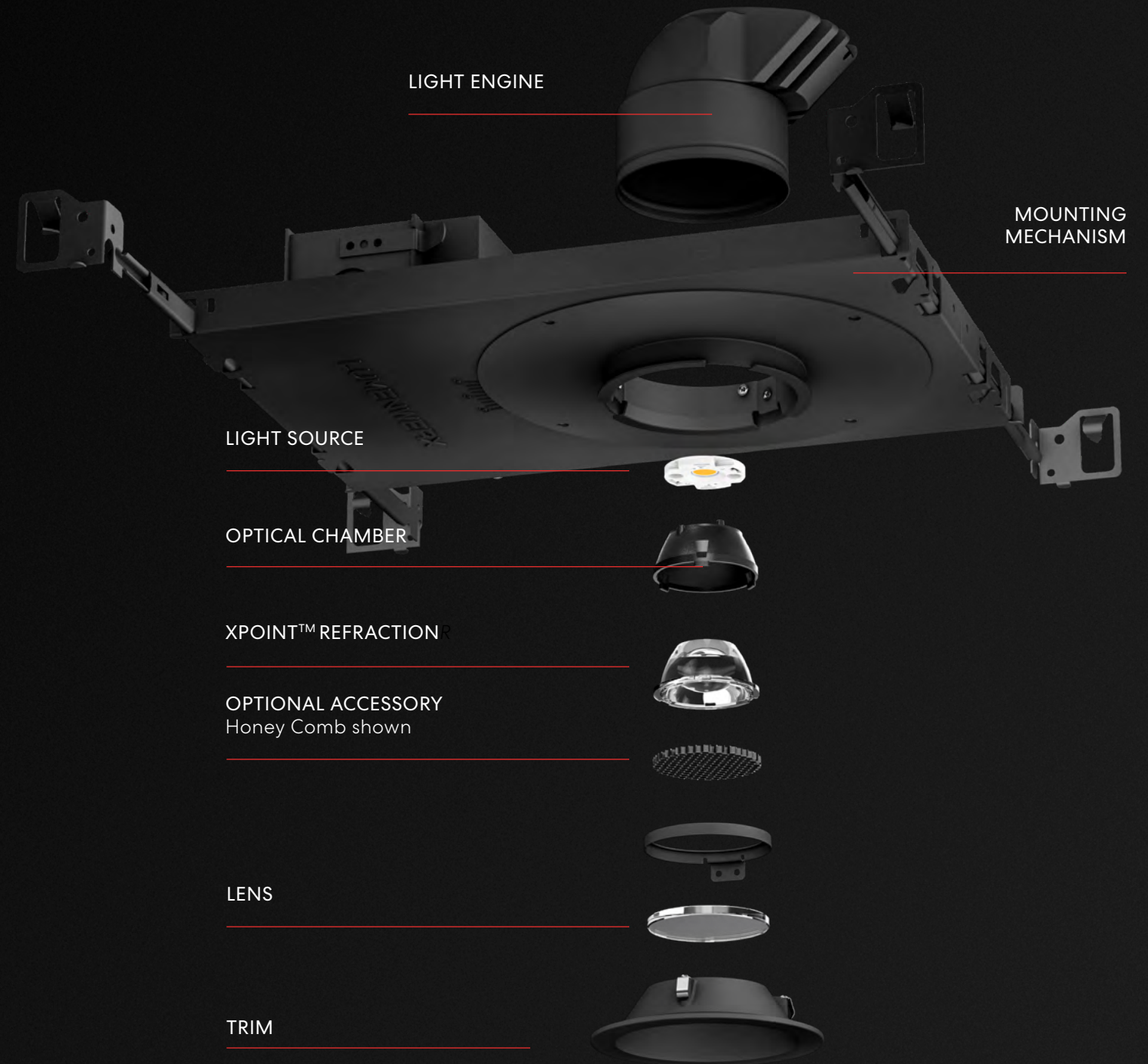
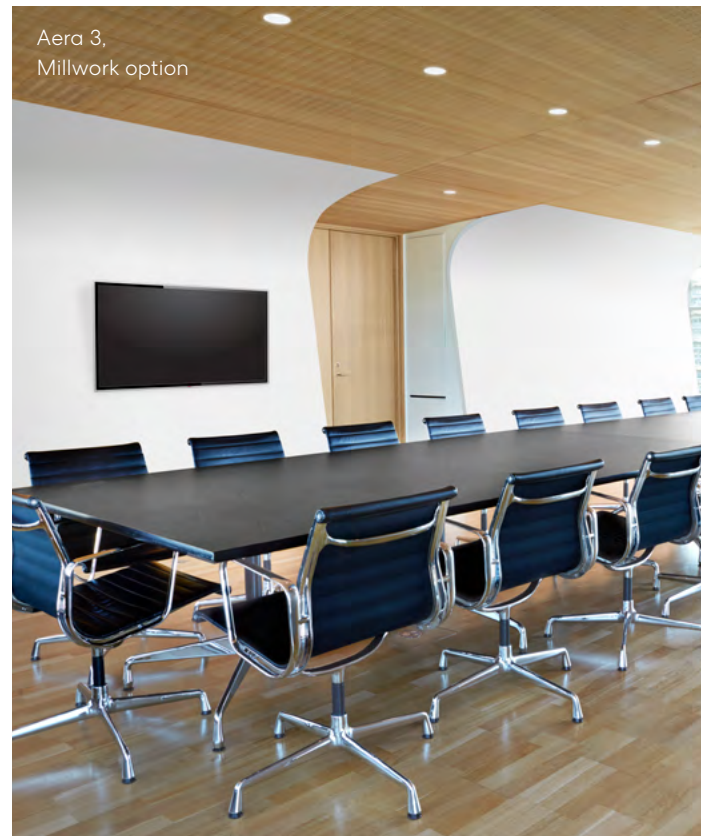
### INSTALLATION OPTIONS:

Open Frame  
Insulated Ceiling  
Chicago Plenum  
Remodel

### CEILING TYPES

Drywall  
Millwork  
Acoustic Tile  
Wood Slat  
& more

Aera downlights are available for New Construction and Remodel to cover typical installation requirements. For confined areas like the plenum space, Aera is the ideal solution with its low profile available in depths as low as 2 5/8". The family offers four mounting bar options: standard bar hangers, commercial bar hangers, flush mount bars, and hat channel bars, all adjustable for a variety of applications.





Matte White



Matte Black



Satin Silver



Matte Silver



Champagne  
+ Custom RAL

# Customize with options

Aera is offered with bevelled, pinhole or wall wash trim details; they complement the minimalist geometric aesthetic of the family and can be flanged or trimless.

The product line offers five standard finishes and custom RAL options for the baffle and flange, not to mention accessories such as the hex louver, a Solite or soft-focus lens, and a spread lens to produce added effects and achieve the right light for your particular application.

Our SOLA (Dim to warm) and DUO (Tunable White) are now available in two CCT ranges and five beam angles with increased performance, allowing you the flexibility for your lighting applications.



### SHAPES

- Round
- Square

### ACCESSORIES

- Hex Louver
- Spread Lens
- Clear Lens

- Frosted diffused lens
- Soft diffused lens, Solite

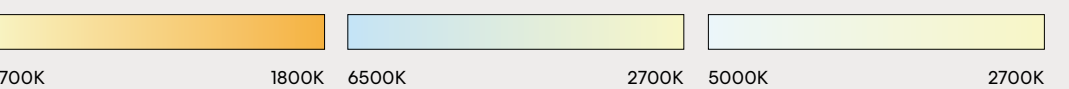
### TRIM STYLES



### DIM TO WARM: SOLA



### TUNABLE WHITE: DUO





# Overview

## Downlights

**SHAPES**      **APERTURE SIZE**      **COLOR RENDERING OPTIONS**      **COLOR TEMPERATURES**

<input type="radio"/> Round	2", 3", 4"	80+, 90+, 95+	<input type="radio"/> 2400K	<input type="radio"/> 5000K
<input type="checkbox"/> Square			<input type="radio"/> 2700K	<input type="radio"/> Sola
			<input type="radio"/> 3000K	<input type="radio"/> Duo
			<input type="radio"/> 3500K	<input type="radio"/> Full Spectrum LED
			<input type="radio"/> 4000K	

**TRIM**      **TRIM STYLES**      **TRIM FINISHES**

<input type="checkbox"/> Recessed Trimless  <input type="checkbox"/> Recessed Trim	<b>BEVEL</b>		<b>PINHOLE</b>		<input type="radio"/> Matte Black <input type="radio"/> Satin Silver <input type="radio"/> Matte White <input type="radio"/> Matte Silver <input type="radio"/> Champagne <input type="radio"/> Primer Finish <input type="radio"/> Dark Bronze <input type="radio"/> Custom RAL
	Flanged	Flanged Trim			
	Trimless	Trimless Drywall			
	WW Flanged				
	WW Trimless				

**DISTRIBUTIONS**      **BEAM ANGLES**      **MULTI-APERTURE CONFIGURATIONS**

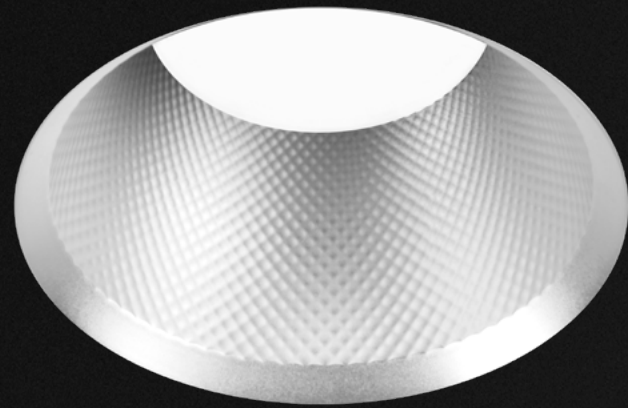
Adjustable Fixed Wall Wash	10°	35°	90°	<b>2", 3" &amp; 4"</b>   
	15°	50°	Low UGR <10 in 10°, 15°, 25°, 35°, and 50° beams	
	25°	80°		

**RATINGS & CERTIFICATIONS**

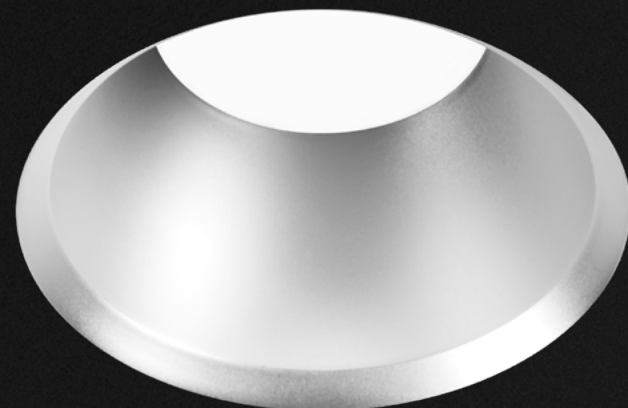
<b>5</b> 5-year warranty	<b>D</b> Declare label	<b>CP</b> Chicago Plenum	<b>L</b> Dry, Damp, Wet locations
<b>E</b> Energy Star	<b>J8</b> JA8 Title 24	<b>IC</b> IC-Rated Option	



Aera 2" square, trimless



PRISM



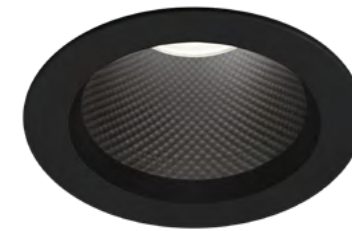
SMOOTH



# Aera 2, 3 Deep

## Downlights

Aera Deep downlights introduce a unique deep baffle feature to the Aera family, available with a prism or smooth texture. This depth allows for an exceptionally low glare quality of light (UGR as low as 1) and a visually quiet ceiling. Aera Deep comes in square or round models and 2" or 3" apertures. The high-performance family displays a precise coupling of optic and trim and can be installed as IC-rated, non-IC-rated, or Chicago Plenum-rated types.

AERA DEEP PRISM  
FLANGED

### SIZES

2" &amp; 3"

### SHAPES

Round &amp; Square

### DEEP BAFFLE OPTIONS

Prism &amp; Smooth

### UGR AS LOW AS 1

Glare-Free

113 lm/W

### TRIM OPTIONS

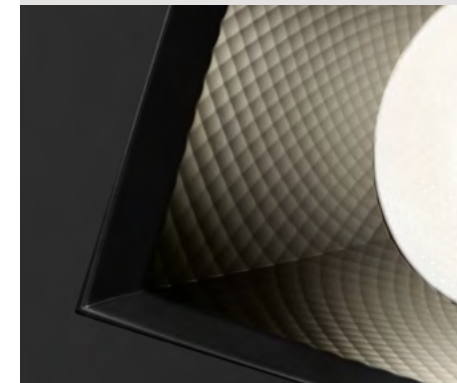
Flanged &amp; Trimless

### 4 BAFFLE FINISHES

Precision Specular  
Matte Silver  
Matte Black  
Matte White

### DIAMOND PRISM OPTIC™ (DPO™)

Aera Deep Prism downlights make use of the Diamond Prism Optic™ (DPO™), our patent-pending 3-tiered system meticulously crafted to refract and reflect beams with great precision, effectively keeping glare to a minimum while delivering light of exceptional quality and visual comfort.





# Overview

## Aera Deep Prism & Smooth

### SHAPES

- Round
- Square

### APERTURE SIZE

2", 3"

### COLOR RENDERING OPTIONS

80+, 90+, 95+

### BAFFLE FINISHES

- Precision Specular
- Matte Silver
- Matte Black
- Matte White

### TRIM STYLES

- Flanged
- Trimless

### TRIM FLANGE FINISHES

- Matte Black
- Matte White

### COLOR TEMPERATURES

- 2400K
- 2700K
- 3000K
- 3500K
- 4000K
- 5000K

- Sola
- Duo
- Full Spectrum LED

### DISTRIBUTIONS

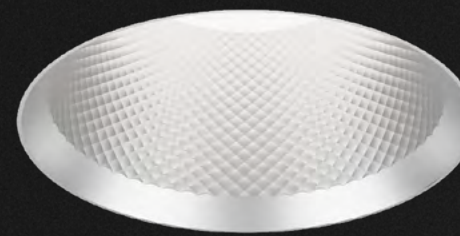
- Fixed

### BEAM ANGLES

- 10°
- 15°
- 25°
- 35°
- 50°

### RATINGS & CERTIFICATIONS

- L** Dry, Damp locations
- W** WELL
- IC** IC-Rated Option
- CP** Chicago Plenum
- 5** 5-year warranty



AERA 2" DEEP PRISM  
Matte Silver



AERA 3" DEEP PRISM  
Precision Specular



AERA 2" DEEP PRISM  
Matte White



AERA 3" DEEP PRISM  
Matte Black



# Aera

## Cylinders & Cuboids

Aera cylinders and cuboids pack a powerful punch from their slim and elegant profiles. Not only do they emit up to 113 lm/W, but they also provide top-notch visual comfort with a UGR of <10 for all beams.



Aera Inflex 2" Cylinder Gold Trim  
 Aera 3" Cuboid Bevel  
 Aera 3" Cylinder Bevel  
 Aera 6" Cylinder



View of reception area showing Aera 3" cylinders, Kraft Heinz Canadian Headquarters, Toronto, Ontario

Design: Syllable Inc.  
Photography: Arnaud Marthouret  
Date: 2023



# Aera

## 2, 3, 4, 5, 6

### Cylinders

Aera 2, 3, 4, 5, and 6 cylinders deliver high-quality light with efficacy up to 140 lm/W. Our patented XPoint™ refraction optic technology allows for a quiet ceiling effect and is capable of up to 10 550 lm delivered. Aera 5 and 6 are perfect for higher ceiling applications.

Aera 3 and 4 cuboids deliver the same performance as their cylindrical counterparts in a sleek rectangular form.

Aera pendant and wall models can be equipped with indirect options.



Aera 2 cylinder, pendant, direct/indirect

#### TRUE TO SIZE DIAMETERS\*

2", 3"  
4", 5"  
6"

Bevel, Decorative  
Bevel, Pinhole

Fixed,  
Wall Wash,  
Asymmetric

\*Aera Cuboid available in 3" and 4" sizes only.

#### MOUNTING

Surface, Pendant,  
and Wall

#### UP TO

10 550 lm  
140 lm/W

#### CERTIFICATIONS

Declare Label,  
Energy Star,  
IP44 Shower Rated,  
California JA Title 24  
Compliant



Declare

Aera 2", 3", 4", 5", and 6"  
Cylinder Pendant



## When the Architecture Demands More.

The **Aera 6" Cylinder** is engineered for high-ceiling and large-volume spaces, delivering exceptional optical efficiency, precise beam control, and high-quality illumination at scale.

As the most powerful fixture in the Aera collection, it provides up to **10,551 lumens** with luminous efficacy reaching **140 lm/W**.

↑ Gates D32-49

Featured Product  
Aera 6" Cylinder, Surface



Aera 3" Cuboid wall wash pendant  
Aera 4" Cylinder wall wash surface



# Aera Cylinder

## Wall Wash

Aera Cylinder Wall Wash models deliver powerful, efficient lighting solutions. Available in multiple sizes and outputs.

UP TO

Uniformity\*  
3.42:1

HEIGHTS

4", 6", 8", 12"  
+ custom

MOUNTING

Surface, Pendant

\*Aera 3" Cylinder wall wash, surface, 36" spacing, 24" set-back, 9' wall height.



## Aera 2, 3, 4 Inflex Adjustable Cylinder

The Aera 2, 3 and 4 Inflex Cylinders feature adjustable optics that can tilt 30 degrees (for Aera 2 Inflex) or 35 degrees and rotate 355 degrees, all while their cylindrical housings stay in their fixed position. Mountable as pendant or surface fixtures, they can serve to emphasize certain features of a space or add visual interest.

### ADJUSTABILITY

Up to 35° x 355°

### DIAMETERS

2", 3", 4"

### MOUNTING

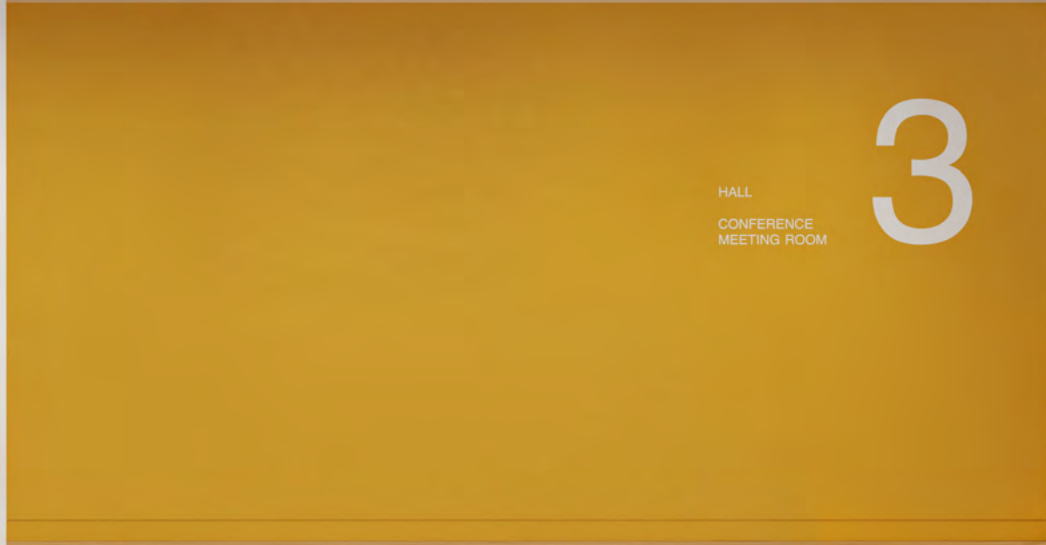
Surface, Pendant

### HEIGHTS

4", 6", 8", 12" \*

XPoint™ Refraction  
Technology

\*4" and 6" heights available with Aera 2" Inflex only.



The Aera Inflex 2" delivers precise aiming through an internally adjustable optical system. The adjustability is visually concealed, allowing the luminaire to retain a quiet ceiling presence.

Aera 2" Inflex, Pendant



# Aera 3 Flex

## Adjustable Cylinder



The Aera 3 Flex Cylinder is adjustable, tilting upwards to 90 degrees and rotating 355 degrees. Mountable as a recessed, surface, pendant, or wall fixture, it brings to the Aera family added flexibility and more options to customize lighting effects.

### DIAMETER

3"

### HEIGHTS

4.5", 6"

### UP TO

90° x 355°

Direct



### MOUNTING

Recessed, Surface,  
Pendant, Wall

Bevel, Pinhole,  
and Decorative  
Bevel

XPoint™  
Refraction  
Technology



# Aera 3 Flex

## Recessed Adjustable Cylinder

The Aera 3 Flex Recessed Cylinder features two trim options: the Flanged Trim and the Trimless Drywall Mudplate.

Aera 3 Flex Luminaire housing for new construction installations is made of a 20 gauge powder-coated steel open frame structure with an 18 gauge galvanized steel junction box. Mounting options include adjustable hanger bars, commercial bars, adjustable hat channel bars, and flush-mounted brackets.

Additionally, multiple hanger bars are available for different ceiling types, while recessed, direct mounting options offer adjustable and static mounting bars suitable for both commercial and residential applications.





Left: Aera Flex 3" Cylinder Pendant.  
Center: Aera 3" downlight.  
Right: Aera Inflex 3" Cylinder Surface.

Light-layering with Aera, Aera Flex, and Aera Inflex luminaires.



# Aera 4 Seal Cylinder

With its IP-66 rating, the Aera Seal Cylinder takes the Aera family's clean aesthetic and performance assets to wet locations and outdoor environments. The Aera 4" Seal Cylinder delivers lighting that's visually comfortable with minimal glare.

IP66 rating

DIAMETER

4"

Direct/indirect  
option

UGR of <10

MOUNTING

Wall, Pendant,  
Surface



Aera 4" Seal Cylinder

Aera 4" seal Cylinder surface and wall

# Hôtel Le Jardin

Aera 4" Seal Cylinders illuminate major outdoor areas of activity and circulation.



# Mounting Options

## Cylinders

Aera cylinders are available in pendant, surface, and wall-mounted configurations.

Pendant models support flat, conduit, direct feed, or deep flat mounting with a recessed driver box, and are offered with a standard stem, swivel, power cord, or fabric-covered power cord.

Surface-mounted models install directly via a flat junction box, conduit, direct feed, or deep flat mounting, with a remote driver.

Wall-mounted cylinders are offered with a standard 4" wall bracket.

### MOUNTING

Surface, pendant, and wall

### CANOPY TYPES

Flat, direct, conduit, and deep

### WALL-MOUNTED CYLINDERS

Standard 4" wall bracket



Flat round canopy,  
4" octagonal j-box



Direct mount round canopy



Deep round canopy,  
driver in canopy



Conduit feed,  
round canopy





Aera 5" cylinder surface with conduit feed canopy

Aera 5" Cylinders illuminate a vast lobby from high above.



# Overview

## Cylinders

SHAPES	COLOR RENDERING OPTIONS	APERTURE SIZE		HEIGHTS	
○ Round	80, 90, 95	<b>AERA</b> 2", 3", 4", 5", 6"	<b>AERA INFLEX</b> 2", 3", 4"	<b>AERA</b> 4", 6", 8", 12" + custom	<b>AERA INFLEX</b> 4", 6", 8", 12" + custom
□ Square		<b>AERA FLEX</b> 3"	<b>AERA SEAL</b> 4"	<b>AERA FLEX</b> 4.5", 6"	<b>AERA SEAL</b> 6", 8", 12" + custom

COLOR TEMPERATURES		MOUNTING OPTIONS		
● 2400K	● 5000K	<b>AERA &amp; AERA SEAL</b>	<b>AERA FLEX</b>	<b>AERA INFLEX</b>
● 2700K	☀️ Sola	Pendant	Pendant	Pendant
● 3000K	☀️ Duo	Surface	Surface	Surface
● 3500K	☀️ Full Spectrum LED	Wall	Recessed	
● 4000K			Wall	

BEAM ANGLES		DISTRIBUTIONS	FINISHES	
10°	50°	<b>AERA &amp; AERA SEAL</b>	● Matte Black	● Wood
15°	80°	Direct	○ Matte White	● Custom RAL
25°	90°	Direct/Indirect	● Champagne	○ Antimicrobial Silverwerx
35°		Wall Wash	● Dark Bronze	
		Asymmetric		
		<b>AERA FLEX &amp; INFLEX</b>		
		Direct		

RATINGS & CERTIFICATIONS			
<b>5</b> 5-year Warranty	<b>D</b> Declare Label	<b>CP</b> Chicago Plenum	<b>L</b> Dry, Damp, Wet Locations
<b>E</b> Energy Star	<b>J8</b> JA8 Title 24	<b>IC</b> IC-Rated Option	



Aera 2" Cylinder Wall  
 Aera 2" Downlight Trimless  
 Aera 3" Cylinder Pendant

Aera Cylinders excel in **hospitality applications**, where **visual comfort** is highly desirable.

# From Essential to Signature

Lumenwerx Downlight Collections



ESSENTIAL ARCHITECTURAL  
+ EXTRAS



PERFORMANCE  
& VERSATILITY



PREMIUM SIGNATURE  
FEATURES



LOW PLENUM  
APPLICATION



THE SPECIALIST



THE MINIATURE

## LIVV

LIVV PLUS

## ECANA

## AERA

AERA DEEP

## AERA SHALO

## VOILA

VOILA SEAL, VOILA SEAL MRI

## PETITE

### FEATURES

The Essentials + The Extras:  
Architectural form, smart performance.  
IP64 rated.

Versatile, high-performance design  
with a powerful output. Built for balance  
and flexibility.

A complete family with feature-rich  
design, precision optics, premium control,  
and signature architectural details.

Aera Shalo extends the versatility  
of the Aera family to shallow ceiling  
applications.

Engineered for demanding spaces.  
Designed for healthcare applications.

Petite strikes that perfect balance  
of compact size, streamlined aesthetics,  
and high performance.

### APERTURE SIZE

2.5" / 3.5"

3" / 4" / 6"

2" / 3" / 4"

2" / 3" / 4"

2" / 4"

1"

### SHAPE

Round

Round  Square

Round  Square

Round  Square

Round  Square

Round

### DISTRIBUTION

Fixed  
 Adjustable  
 Wall Wash

Fixed  
 Adjustable  
 Wall Wash

Fixed  
 Adjustable  
 Wall Wash

Fixed  
 Adjustable  
 Wall Wash

Fixed  
 Adjustable  
 Wall Wash

Fixed  
 Adjustable  
 Wall Wash

### MAX. DELIVERED LUMENS BY SIZE (AT 3500K)

1300 lm / 1700 lm

2100 lm / 2900 lm / 4700 lm

950 lm / 2100 lm / 2800 lm

950 lm / 2100 lm / 2800 lm

1350 lm / 2800 lm

605 lm / 1160 lm

### APPLICATION

New construction, Remodel

New construction, Remodel

New construction, Remodel

New construction

New construction

New construction

### HOUSING TYPE

Type-IC, Open Frame Type Non-IC  
Chicago Plenum  
Airtight  
Concrete Pour

Type-IC  
Open Frame Type Non-IC  
Chicago Plenum  
Airtight

Type-IC  
Open Frame Type Non-IC  
Chicago Plenum  
Airtight

Type-IC  
Open Frame Type Non-IC  
Chicago Plenum

Type-IC  
Type Non-IC  
Chicago Plenum

Type-IC  
Type Non-IC  
Chicago Plenum

### PLENUM CLEARANCE BY SIZE

As low as: 4"

As low as: 4", 4 1/8", 6"

As low as: 2 5/8"

As low as: 2"

As low as: 4"

As low as: 1 3/4"

### OTHER AVAILABLE CONFIGURATIONS

Wet Location - IP64

Damp Location

Damp Location, Cylinder, Cuboid, Flex, Inflex,  
Multi-aperture,  
Wet Location — IP44

Wet Location — IP44

Wet Location — IP64, Cylinder, Cuboid, MRI  
Construction

Damp Location

### CERTIFICATIONS





AERA COLLECTION  
BROCHURE



AERA COLLECTION  
ONLINE

 **Lumenwerx**

ALWAYS LIGHT  
RIGHT

[lumenwerx.com](https://lumenwerx.com)  
R.12.2025