

# Audia

A BREAKTHROUGH  
IN ACOUSTIC LIGHTING





# EchoCore™ technology

This patent pending technology uses a die-cut aluminum wrap and multiple layers of sound-absorbing material to trap acoustic waves. Sound travels through the aluminum exterior into a sound absorbing core, resulting in a 30% increase in sound reduction compared to competing luminaires.

Lumenwerx EchoCore™ technology empowers luminaires to absorb significantly more sound than traditional felt-fitted acoustic fixtures are capable of absorbing.

Acoustic fixtures equipped with EchoCore™ (Audia, Pop, and Aera) deliver exceptional illumination with a variety of circadian, tunable white, and RGB+W solutions, and help to define spaces with a choice of standard, premium, and custom options, as well as with a selection of patterns, shapes, and mounting possibilities.

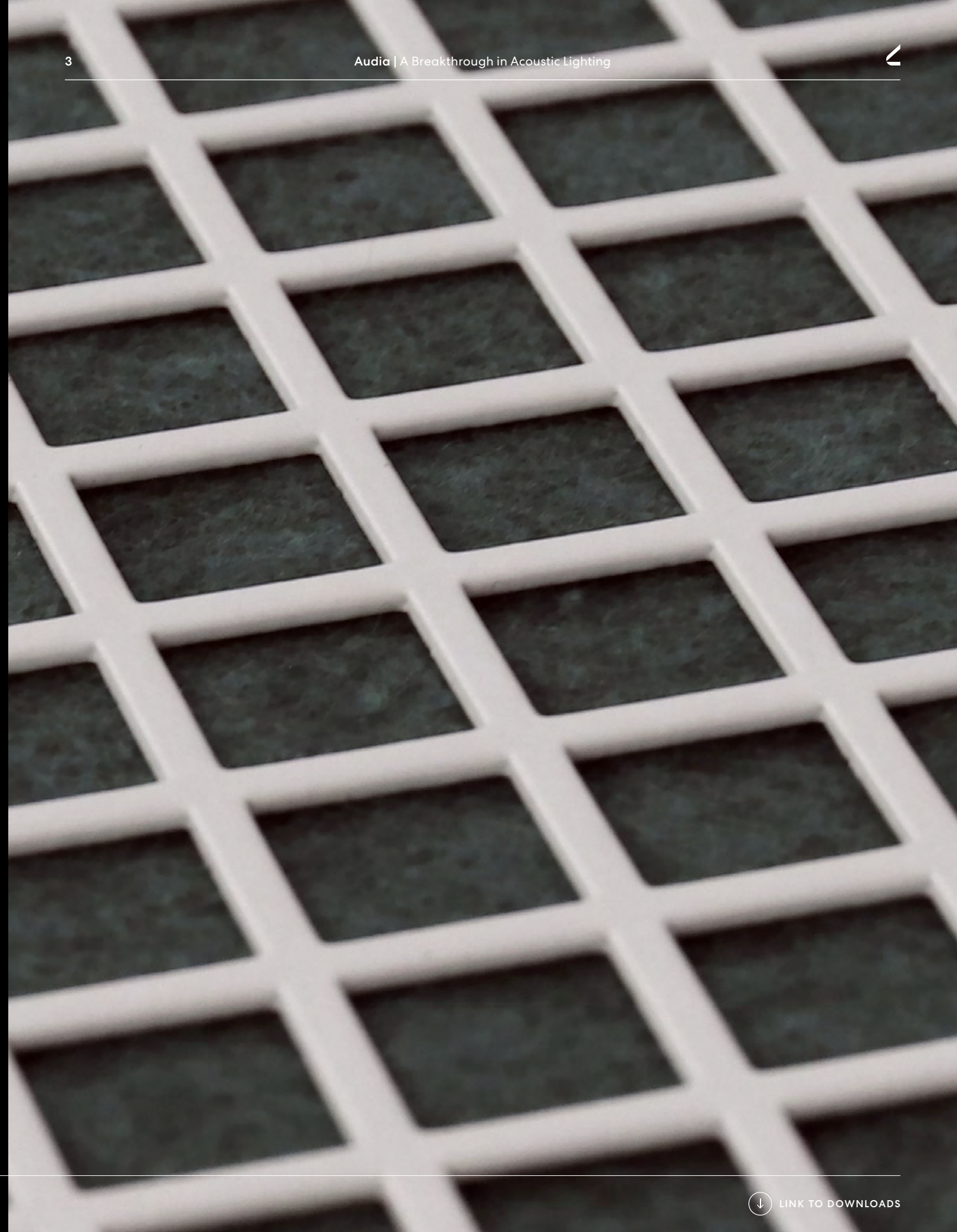
Available in  
Audia, Pop,  
and Aera

Pendant, Surface,  
and Recessed

Linear, Round,  
and Square

5 patterns +  
custom

UP TO  
4 ft in diameter  
and 12 ft in length





# Pattern Your Design



Enhance a theme, add dimension, create a focal point, or make the lighting fixture the focal point. With five patterns (round, square, linear, cubic, and scallop) and the option to customize, there are plenty of possibilities to provide the best acoustic lighting solutions for your interior spaces.

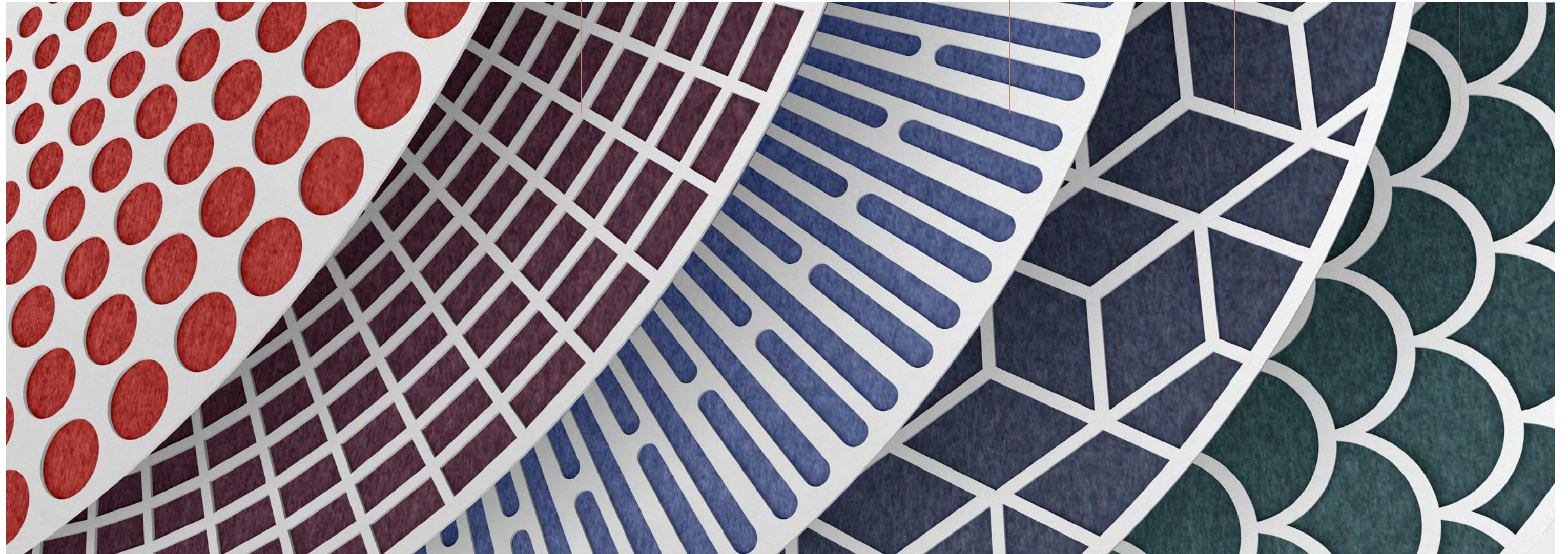
ROUND

SQUARE

LINEAR

CUBIC

SCALLOP





# Acoustic Felt

Created from recycled PET polyester (polyethylene terephthalate), acoustic felt is a sound-absorbing panel. Acoustic felt is available in our Standard, Premium, and Madera color palettes. With over 30 options, you'll find a range of colorways perfectly suited to ensure a seamless blend of aesthetics and functionality.

60%  
Recycled Material

Zero VOC  
Emissions

Flame  
Retardant

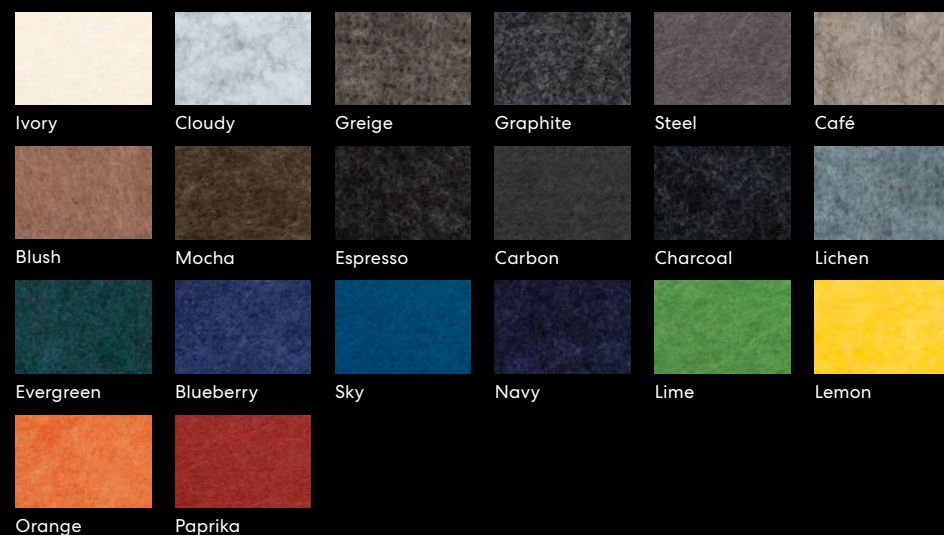
Mold Resistant  
& Breathable

## Felt Color Options

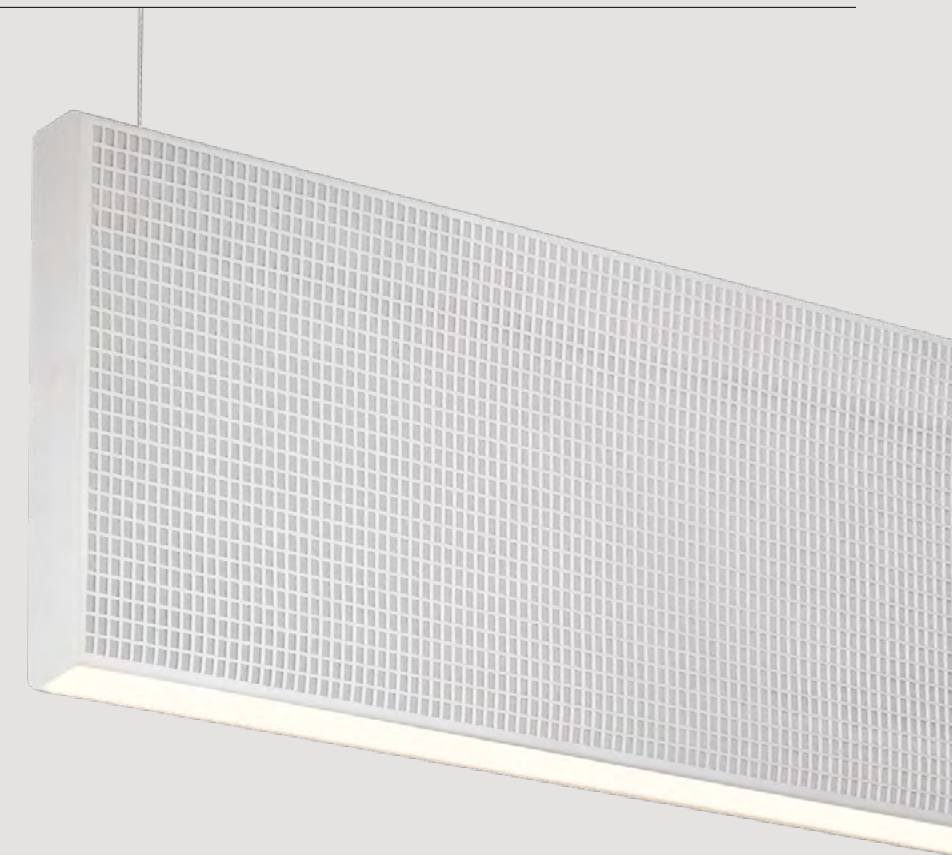
### STANDARD FELT COLOR OPTIONS



### PREMIUM FELT COLOR OPTIONS



# Fixtures Finishes



Die-cut  
Aluminum Wrap

## Fixture Finish Color Options

### STANDARD

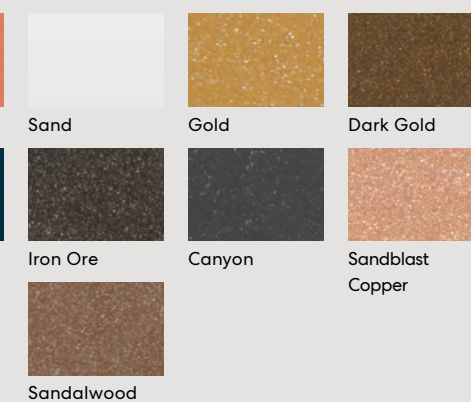


### NEUTRAL

### DESIGNER

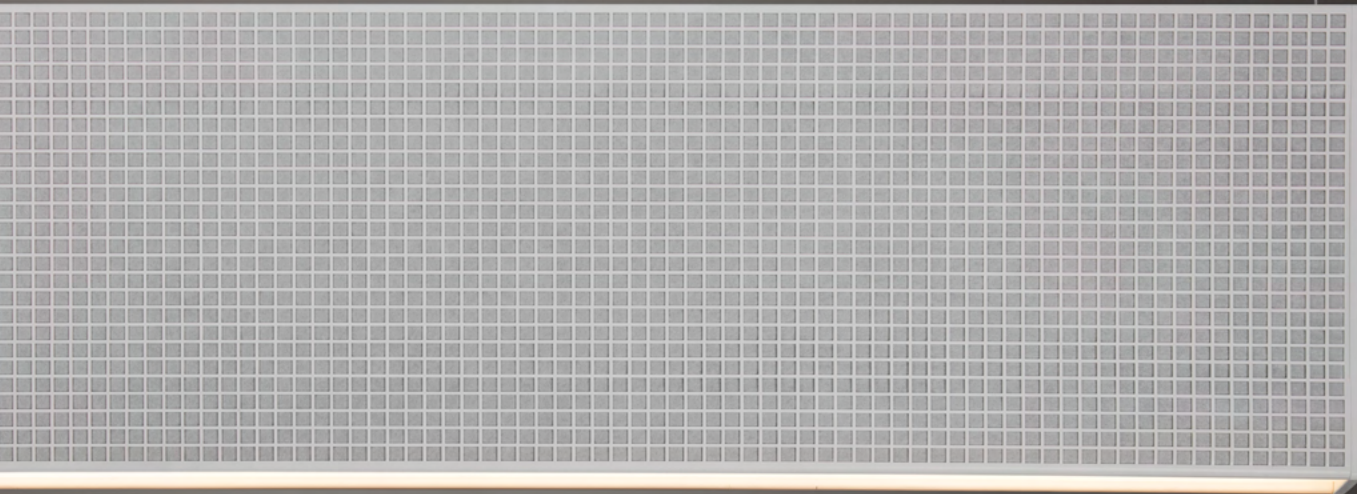


### METALLICS





Audia  
 Fixture finish: White  
 Interior Felt Color: Frost White  
 Pattern: Square



Declare.



# Audia

## A Breakthrough in Acoustic Lighting

Our flagship offering, Audia uses the science of Helmholtz resonance principles to pass acoustic waves through aluminum lattice, it is then trapped by our proprietary sound-absorbing material called EchoCore™ technology. With its slim core, narrow body and multiple color options, Audia was designed from the ground up with sound and light excellence in mind.

30%  
Improvement  
in Sound Reduction  
Over Traditional  
Acoustic Luminaires

One of the Slimmest  
Acoustic Profiles on  
the Market (1.77 in)

Stylish, Easy-to-  
clean Die-cut  
Aluminum

No Compromise  
on Illumination  
and Performance



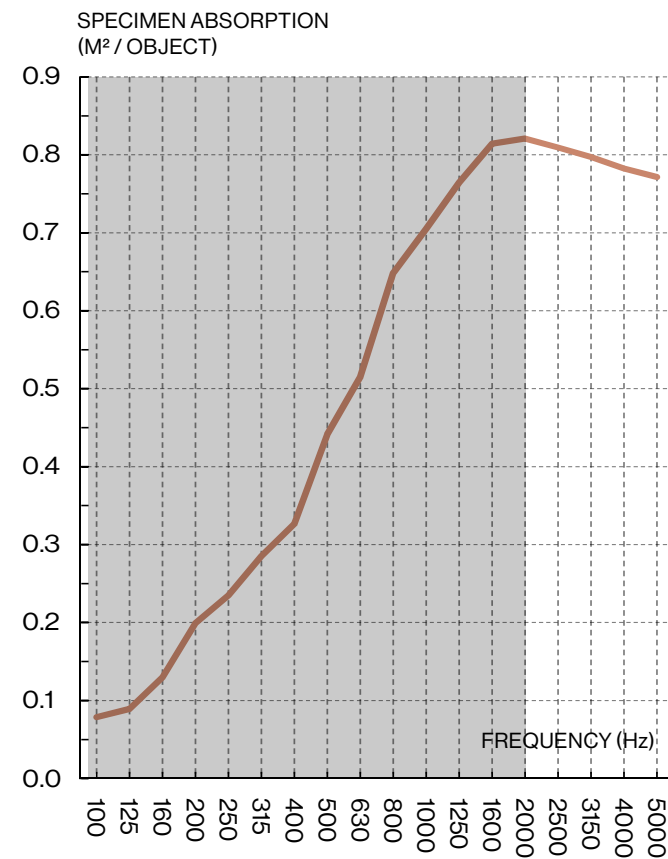
reddot winner 2020



# Audia Technology and Design

Audia comes with a thin and sleek profile at 1.77" in width, it's one of the slimmest acoustic luminaire profiles on the market with maximum sound absorption. The sound absorption technology used in EchoCore™ (patent pending) is based on the Helmholtz principal of sound. We have specifically sized lattice openings which allow sound to pass through but not escape. Once the sound has passed through the lattice, it is then trapped by a proprietary amount of eco-conscious sound confining material that is strategically layered.

As demonstrated by the graph above Audia performs well at many frequencies. On average it out performs traditional acoustic felt luminaires by thirty percent.



Sound Absorption Results – Lumenwerx Audia rows of 7 units spaced 28" o.c, bottom edge of unit 39.125" from the floor.

Human hearing frequencies range: 20Hz-2000Hz

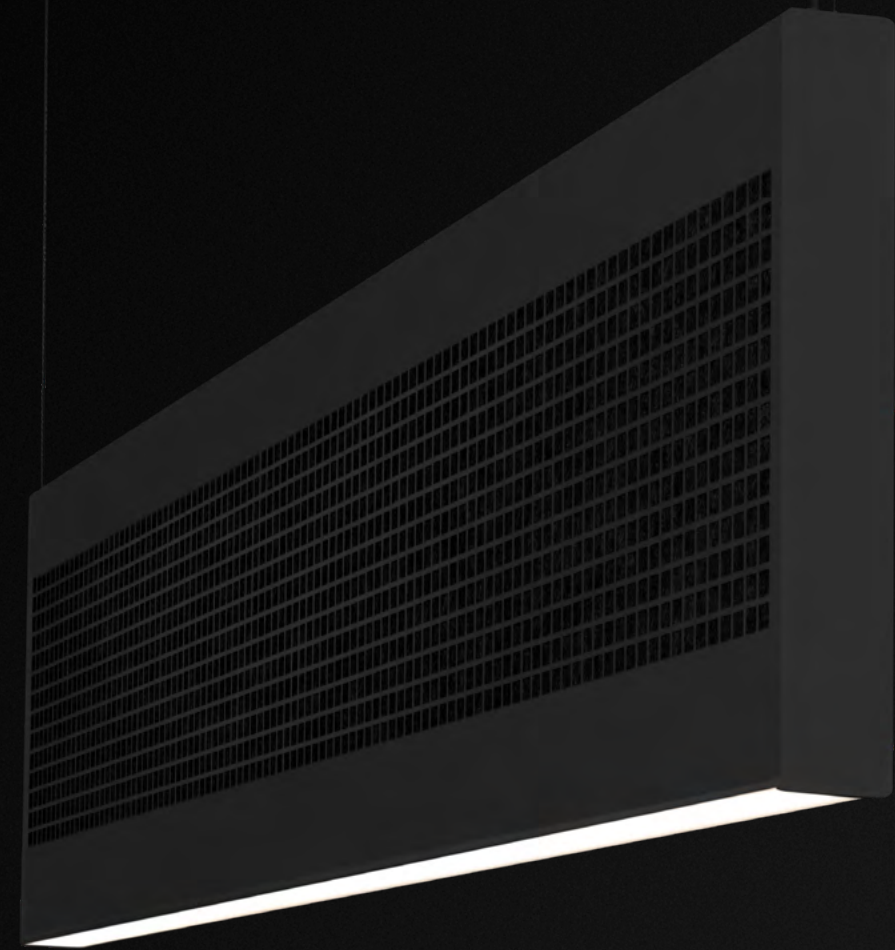
## OPTION



(Blank with acoustic only)



Audia Half Perforation  
Fixture finish: Black  
Interior Felt Color: True Black  
Pattern: Square





Featuring a combination of Audia EchoCore™ lit and unlit luminaires with scallop pattern



Audia EchoCore™  
Rhythm and repetition  
add a **quiet balance**  
to the space.



# Overview

## Audia EchoCore™

**SIZES (HEIGHTS)**

12 in, 16 in  
\*Available in lit and unlit

**COLOR RENDERING OPTIONS**

80+, 90+ (R9>50), 95 CRI

**DISTRIBUTIONS**

Direct/Indirect  
Direct  
Indirect

**COLOR TEMPERATURES**

- 2700K
- 3000K
- 3500K
- 4000K
- Sola
- Duo
- Quadro
- Full Spectrum
- Bios

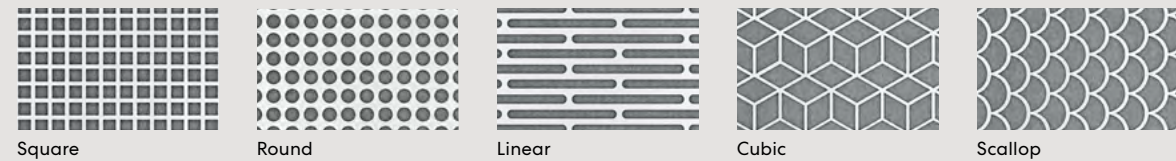
**DIRECT OPTIC**

HLO - High-Efficiency  
Lambertian Optic

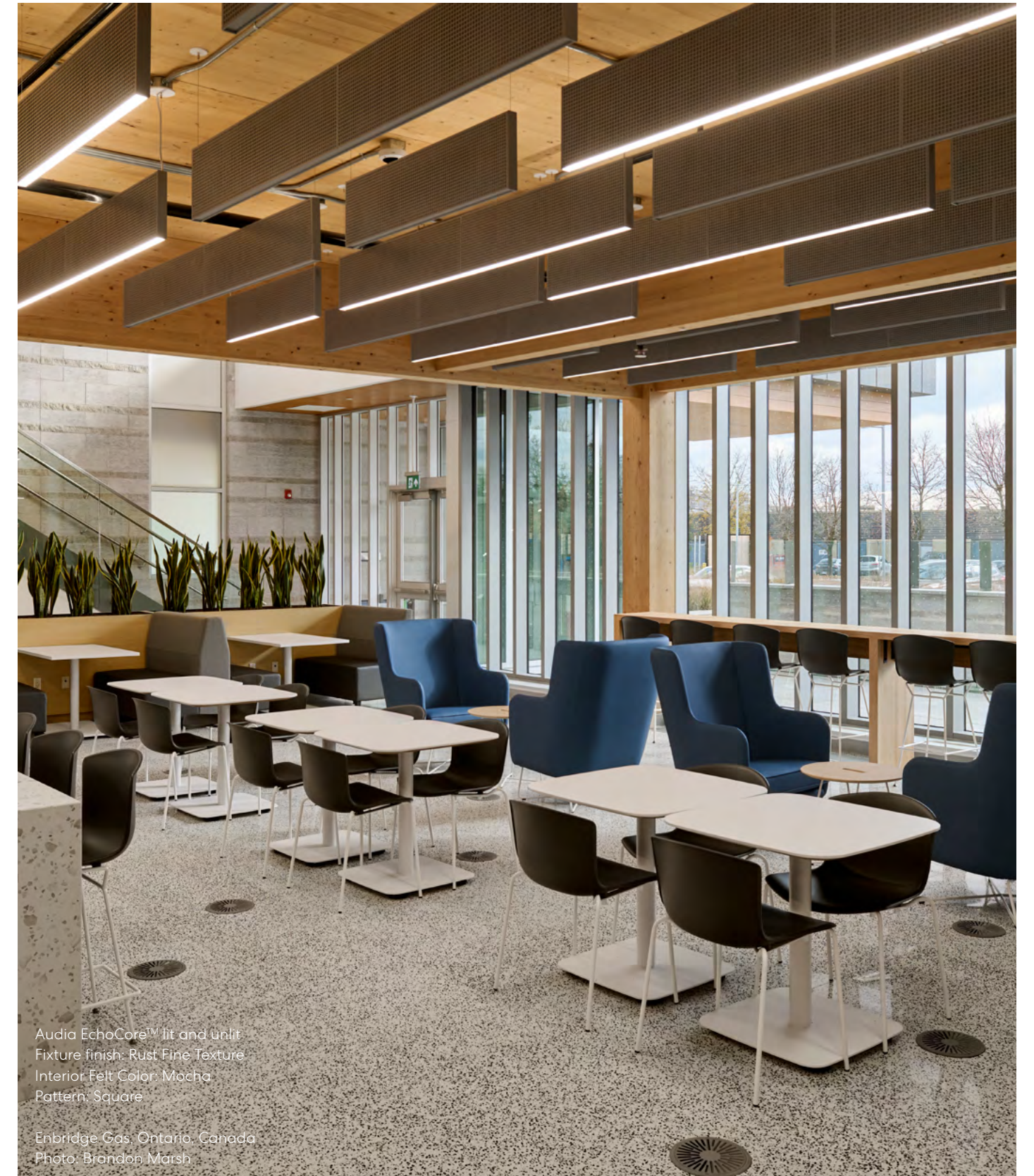
**INDIRECT OPTICS**

WIO2 - Widespread  
Indirect Optic

**FIXTURE PATTERN**



Square      Round      Linear      Cubic      Scallop



Audia EchoCore™ lit and unlit  
Fixture finish: Rust Fine Texture  
Interior Felt Color: Mocha  
Pattern: Square  
Enbridge Gas, Ontario, Canada  
Photo: Brandon Marsh



AUDIA ECHOCORE™  
ONLINE



COMPLETE ECHOCORE™  
BROCHURE



ALWAYS LIGHT  
RIGHT

[lumenwerx.com](https://lumenwerx.com)  
R.01.2026