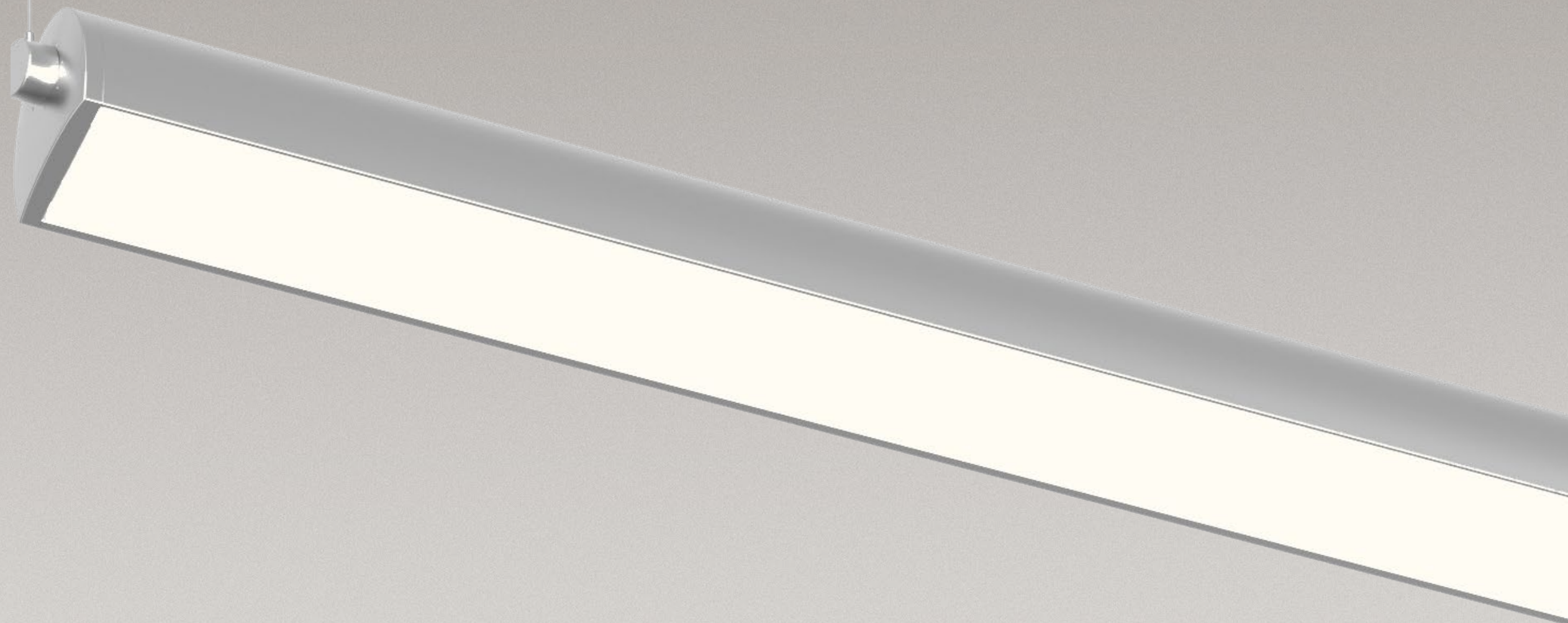


Lumenwerx 

Axle

LINEAR ACCENT. ASYMMETRIC CONTROL.

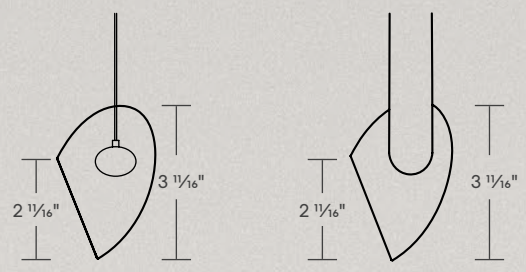




Axle

Axle is an elegant and compact LED linear accent luminaire providing efficient asymmetric light distribution. Softly curved, Axle measures just 2 1/16" by 3 1/16". With adjustable optics, light output from 350 to 1200 lumens per foot (nominal) and efficacy up to 126 lm/W, Axle delivers quality illumination to graphics and artwork, as well as ceilings and walls. Highly flexible, Axle can be installed as individual luminaires (up to 8') or in continuous runs, with arm or cable suspension. LED boards and drivers are accessible without removing the luminaire.

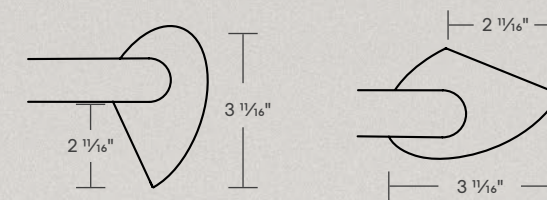
PENDANT



Axle cable direct

Axle arm direct

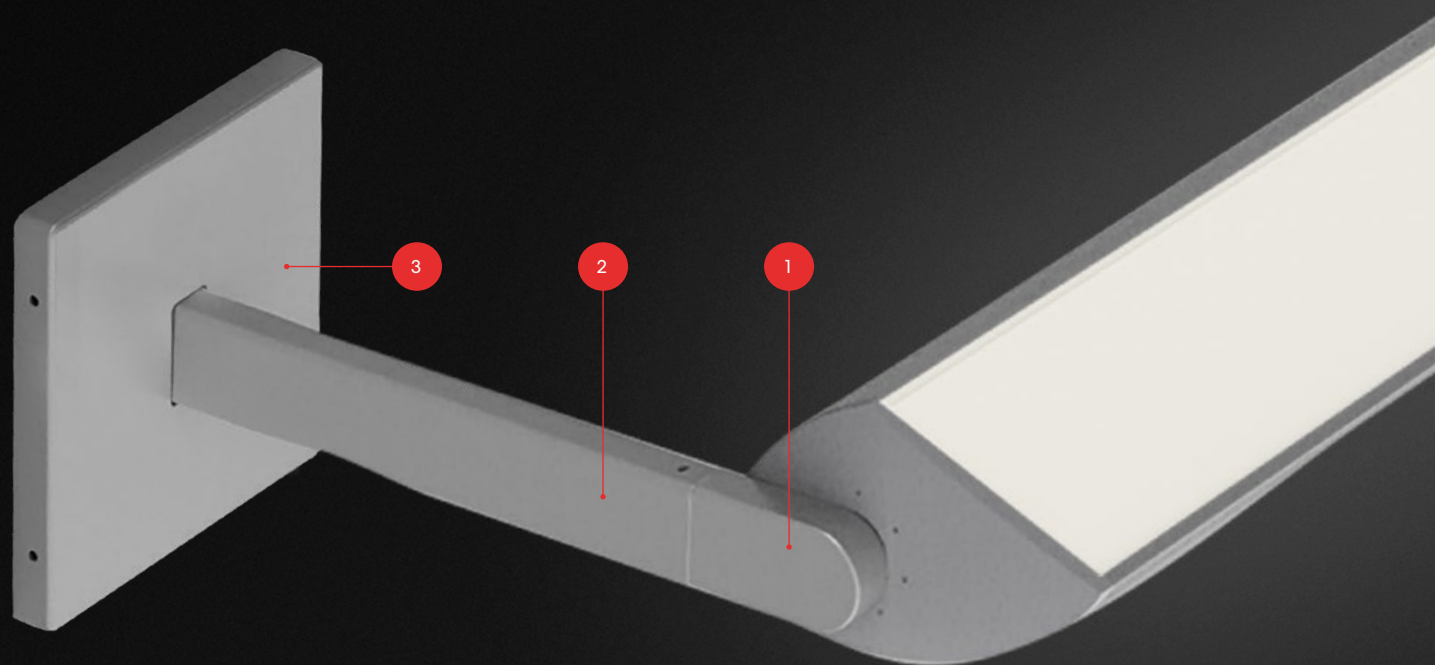
WALL



Axle arm direct

Axle arm indirect



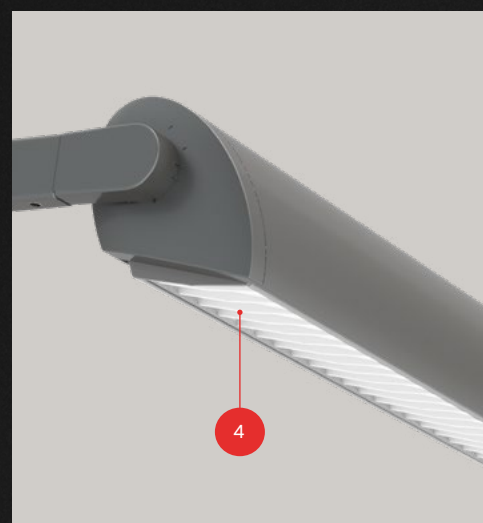


1 ROTATION HUB
Mounting hub provides field adjustment for precise aiming.

2 CANTILEVER ARM
Die-formed steel provides cantilevered extension of 6", 12" or 18" and conceals wiring.

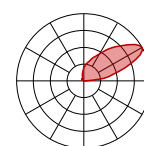
3 MOUNTING PLATES
Arm mounting provides concealed wiring and connects to outlet boxes using 4" square and round mounting plates.

4 WHITE BAFFLE
Optional die-formed sheet metal white baffle with blades, spaced 1/2" apart, provides lateral shielding and can be field installed.

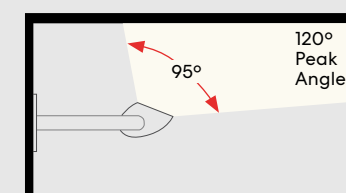


Asymmetric Projecting Optic

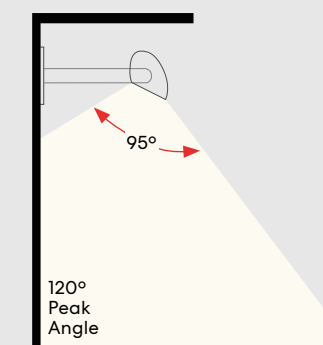
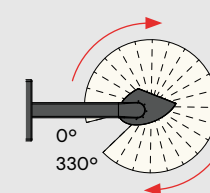
Cartridge-mounted, linear arrays are paired with a precisely formed semi-specular reflector for smooth light distribution and a 95° beam spread. The LED array is protected by a clear acrylic cover. In an indirect orientation, peak intensity occurs at 120° above nadir with a peak-to-zenith intensity ratio of 5.2:1. The Axle housing can be field rotated in 15° increments that allow precise aiming.



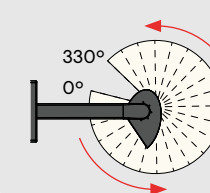
Field Adjustable Aiming



Wall asymmetric indirect



Wall asymmetric direct



0° 330°



AXLE ONLINE

 **Lumenwerx**

ALWAYS LIGHT
RIGHT

lumenwerx.com
R.03.2026