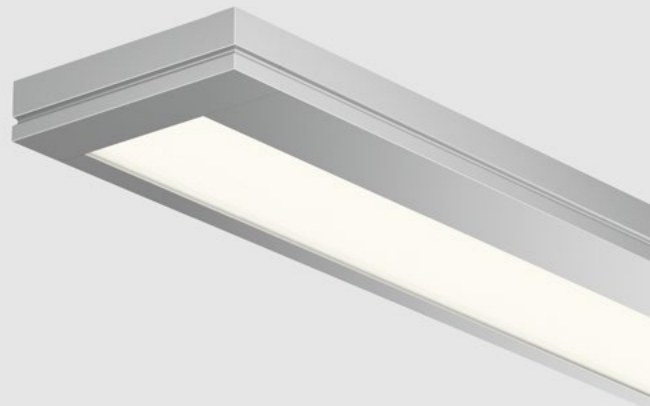




Camber and Reven

REFINED PROFILES.
DISTINCT DESIGNS.





Camber and Reven

Camber and Reven are high-performance LED pendant luminaires, each with an elegantly thin profile. Constructed of extruded aluminum with cast aluminum end caps, both luminaires are barely 1½" deep. Camber's curved sides transition smoothly into its end caps, creating a continuous form. Reven features a stepped profile that reduces the visual mass of the luminaire.

UP TO
105 lm/W

Static White

DISTRIBUTIONS
Direct/
Indirect

OPTIC
Precision
Micro-Prism
Optic (PMO)



Reven Pendant,
White



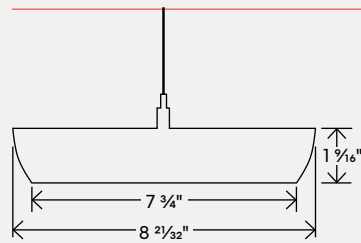


Construction

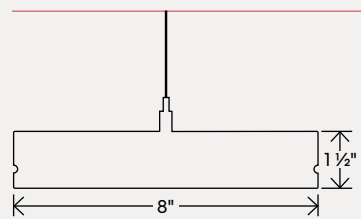
Camber and Reven



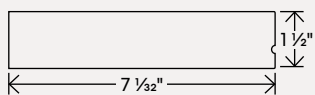
CAMBER



REVEN PENDANT



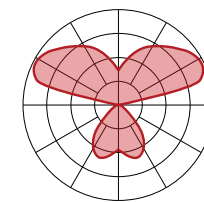
REVEN WALL



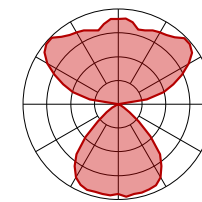
Typical Performance

Using advanced LED engines and optics, both luminaires provide comfortable, widespread, and highly efficient illumination, along with comprehensive electrical and controls options. Long-term reliability is supported by thermal management, as well as easy access to LED boards and drivers.

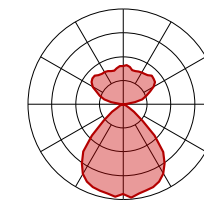
Optical configurations include a range of direct and indirect light distributions, together with independently controllable uplight and downlight. Companion wall luminaires are also part of the collection.



30% down - 70% up



60% down - 40% up



80% down - 20% up

PER 4FT - FOR 30% DOWN AND 70% UP DISTRIBUTION

LED OUTPUT	COLOR TEMPS	WATTS	NOMINAL LUMENS	EFFICACY LPW
Low output	4000k	28.5	3000	105
Medium output	4000k	33.5	3500	105
High output	4000k	38	4000	105



CAMBER ONLINE



REVEN ONLINE

 **Lumenwerx**

ALWAYS LIGHT
RIGHT

lumenwerx.com
R.03.2026