

# Cluster Pi

CONCENTRIC DESIGN FOR INSPIRED SPACES





# Introducing Cluster Pi



**APERTURE SIZE**

3.5", 6.5", 9"  
(Small, Medium, Large)

**OPTICS**

KVCO™,  
MRO, HLO

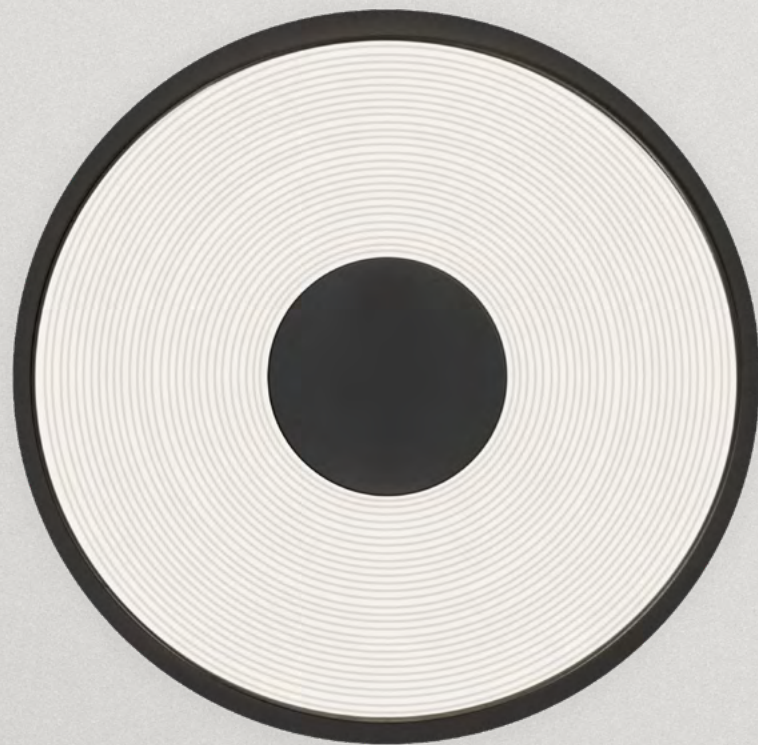
**MOUNTING OPTIONS**

Recessed,  
Surface, Pendant

**PROFILE**

Low profile  
< 2" in all profiles

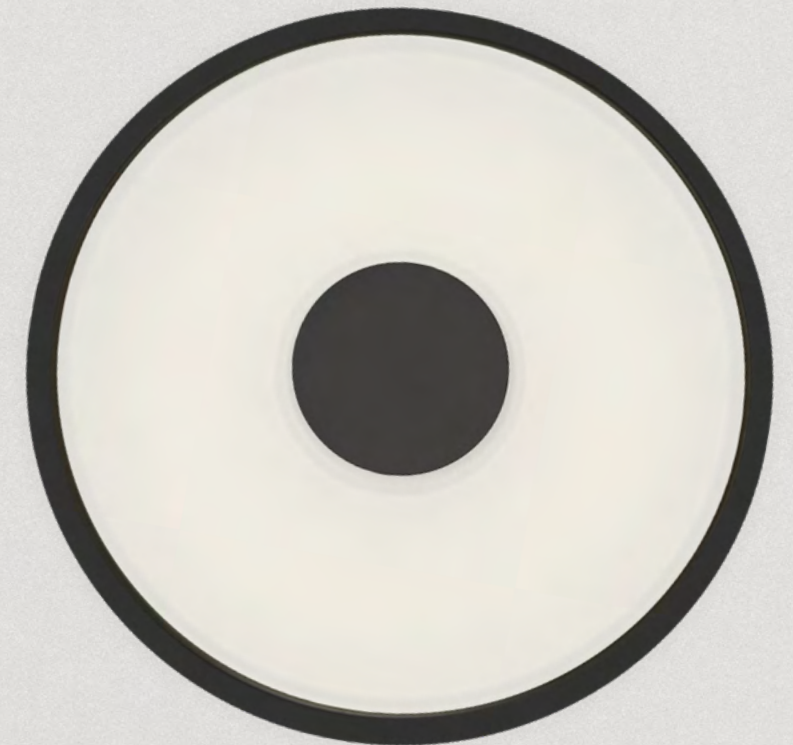
CLUSTER PI  
KVCO™



CLUSTER PI  
MRO



CLUSTER PI  
HLO





## Circling the Square

Say hi to Pi, the latest addition to our sought-after Cluster product line. Named after the mathematical constant we all know, Pi maintains Cluster's characteristic quality and mid-century modernist vibe, while embodying softer, circular forms finely crafted to allow for a secondary luminaire to be housed at its center.

Typically, Cluster designs are based on fundamental 1.2-square-inch light cells used in linear and cuboid arrays. For Pi, however, the size and shape of the original cells have been tweaked to fit perfectly into a ringed array that runs the circumference of the fixture.

With Cluster Pi, the creative reach of the entire Cluster collection extends into a new realm with a more rounded offering that can run circles around its former self.



Cluster Pi MRO 3.5" surface;  
Cluster Pi MRO 3.5" pendant



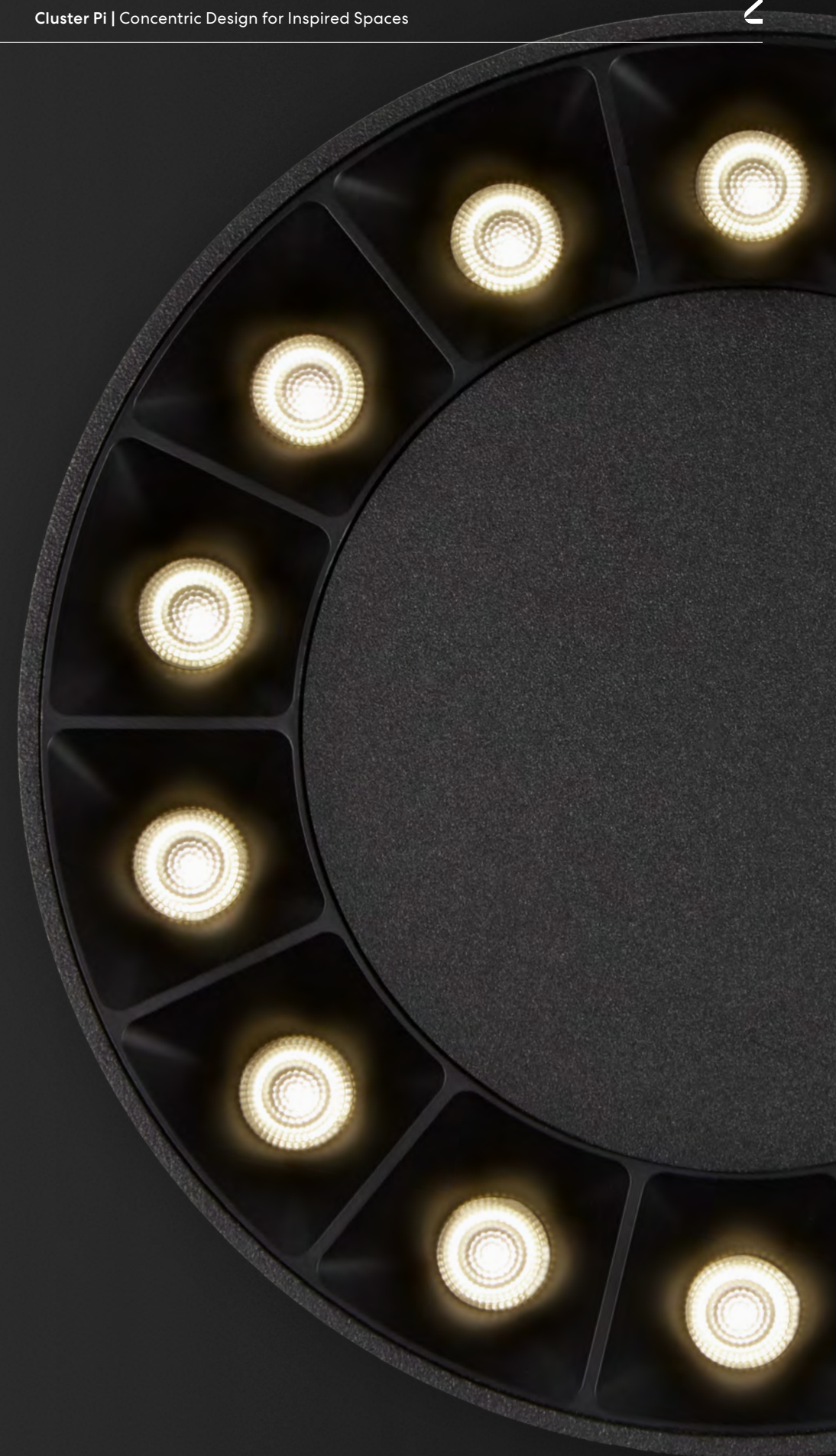
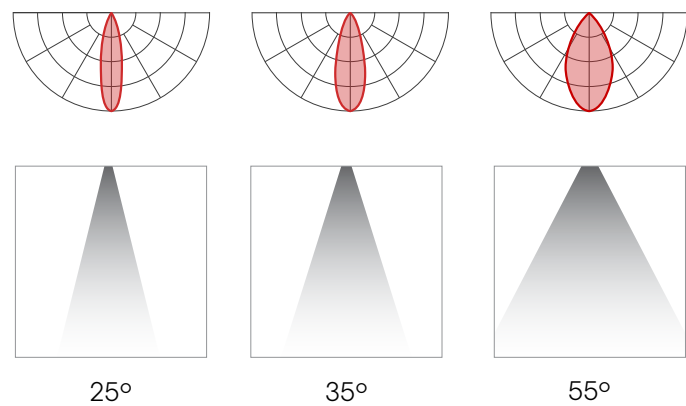
Surface and pendant mounted  
luminaires **anchor the space**  
with **visual rhythm**.



# Cluster Pi with Miniature Reflector Optic (MRO)

Cluster Pi fixtures with the Miniature Reflector Optic (MRO) are equipped with precisely molded Total Internal Reflection (TIR) elements that have been placed over each LED emitter in the fixture's circular array with parabolic reflectors providing further shielding of the light source. As a result, delivered beams are remarkably comfortable and offer a gentle, blended transition of light to darkness.

## BEAM SPREADS

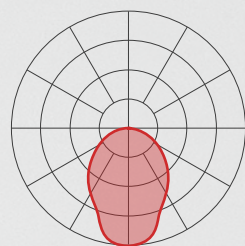




Cluster Pi MRO 6.5" recessed with Hemi add-on;  
Pivot recessed with Cluster module



Cluster Pi's arrays **complement with ease** the design esthetic of **mid-century** modernism.



# Cluster Pi with Kinetic Visual Comfort Optic™ (KVCO™)

Cluster Pi with KVCO™ relies on the optic's finely crafted series of concentric grooves to serve as light-bending prisms redirecting parallel rays to a common focal length, delivering beams that are precise and clean. The optic can change in appearance depending on the lighting conditions in its immediate surroundings.



Cluster Pi KVCO™ 6.5" recessed



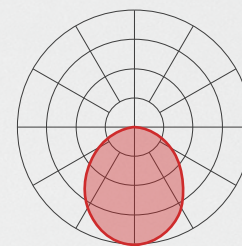
Varying textures, forms,  
and sizes **work in harmony**  
under the same light.



# Cluster Pi with High- Efficiency Lambertian Optic (HLO)

Our most popular optic, the High-Efficiency Lambertian Optic (HLO), is engineered with reflective sidewalls that distribute LED output across acrylic shielding. Cluster Pi with HLO delivers soft, diffused beams.

To negotiate the curves of Lumenwerx rounded fixtures, the HLO is equipped with proprietary SupremeGrip™ technology, which keeps the optic securely in place.

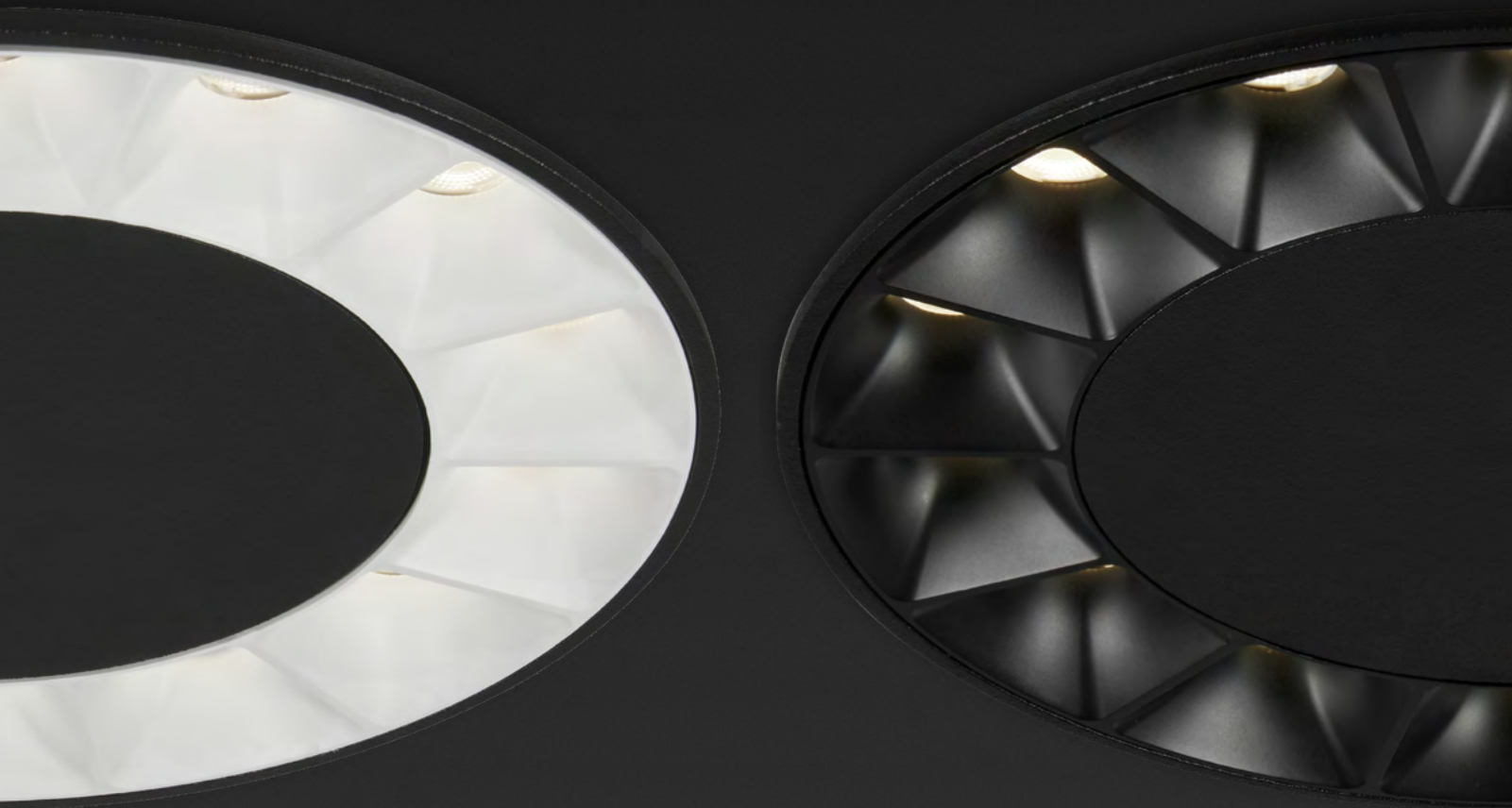




Cluster Pi HLO 9" recessed



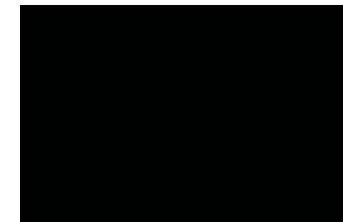
Lighting placement enhances pathways and sight lines, **creating a dynamic spatial experience.**



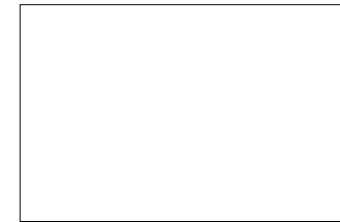
# Finishes

Cluster Pi Optics are available in Matte Black, Matte White, and Matte Silver, while extrusion finish options are Textured Matte Black, Textured Matte White, and Custom RAL.

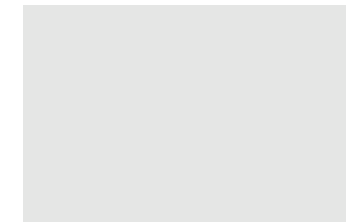
## OPTIC FINISHES



Matte Black

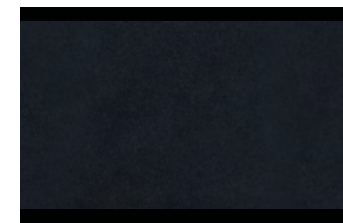


Matte White

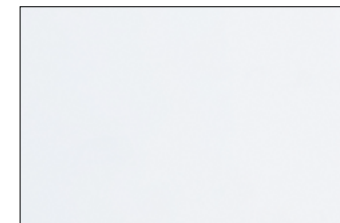


Matte Silver

## EXTRUSION FINISHES



Textured Matte Black



Textured Matte White



Custom RAL



# Mountings



Cluster Pi luminaires can be recessed, surface, or pendant mounted, with each option displaying Cluster Pi's distinct qualities.



## RECESSED

Recessed fixtures accommodate add-ons while still maintaining a low profile extending into the ceiling.



## SURFACE

Cluster Pi surface fixtures occupy a clean, precise presence with mounting hidden.



## PENDANT

Suspended by a power cord or stem, Cluster Pi pendants have a timeless geometric aesthetic that makes them suitable for any indoor space.

Cluster Pi MRO 3.5" recessed;  
Cluster Pi MRO 3.5" pendant

Recessed luminaires **set the mood**,  
while pendants rest poised  
to illuminate the tasks to come..

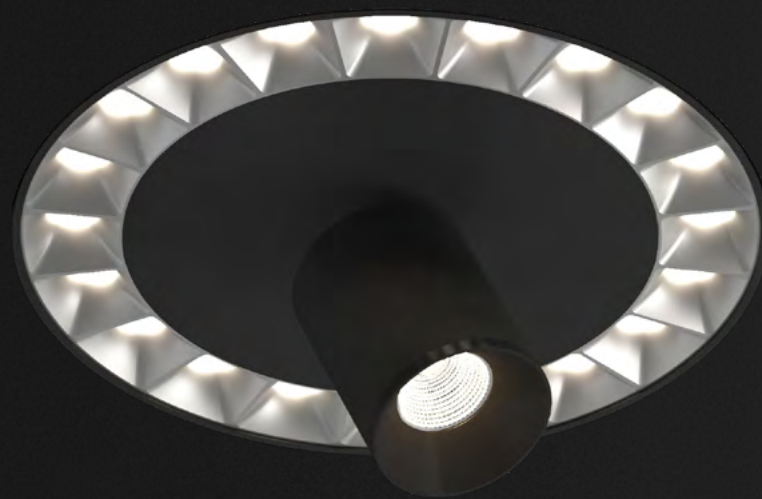


# Add-ons

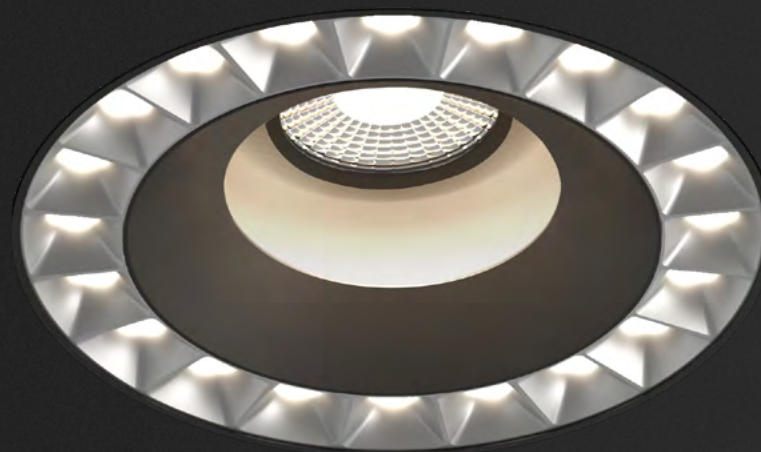


Within Cluster Pi Medium and Large fixtures with MRO lies the space to house an additional luminaire from the Lumenwerx offering.

This attribute is particularly beneficial for layering two types of lighting (e.g. ambient and task) within the same luminaire or series of luminaires



CLUSTER PI MRO 9"  
WITH DOT 2" ADD-ON



CLUSTER PI MRO 9" WITH  
HEMI L ADD-ON



CLUSTER PI MRO 9" WITH  
DOT CYLINDER 1" ADD-ON

Cluster Pi MRO 9" recessed with Dot 2" add-on;  
Cluster Pi MRO 9" recessed with Hemi add-on

Within the same luminaire, Cluster Pi  
**illuminates the path**, while add-on  
Dot lights the products.



# Cluster Pi

## Overview

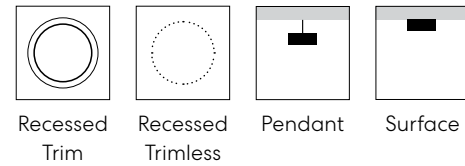
**APERTURE SIZE**

3.5", 6.5", 9"

**OPTICS**

MRO, KVCO™, HLO

**MOUNTING OPTIONS**



**COLOR TEMPERATURES**

- 2700K
- 3000K
- 3500K
- 4000K

**MRO LOUVER FINISHES**

- Matte White
- Matte Black
- Matte Silver

**REVEAL FINISHES** (for pendant, surface)

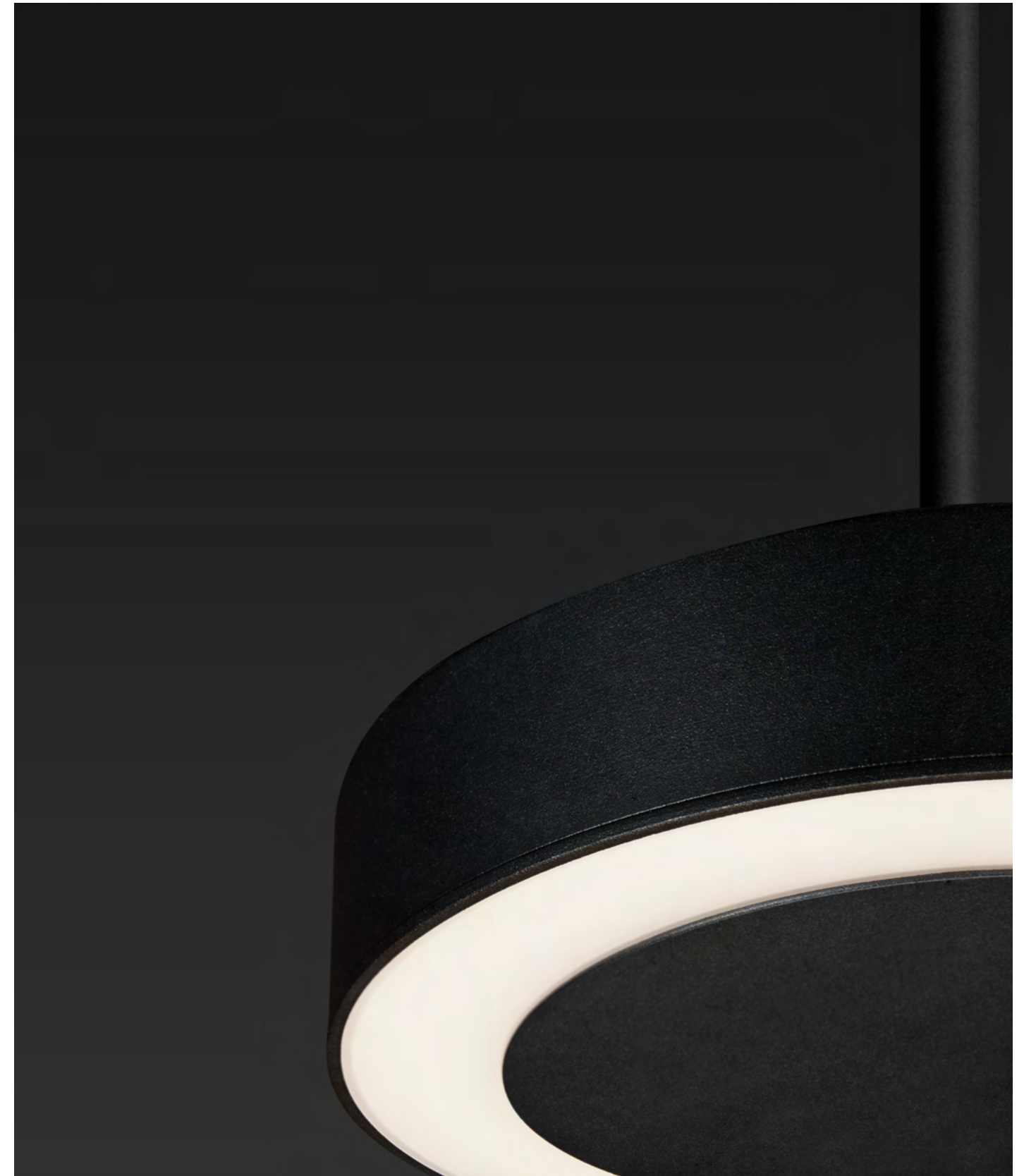
- Textured Matte White
- Textured Matte Black
- Custom RAL

**MEDIUM MRO ADD-ONS**(for recessed MRO only)

Hemi S	Ecana 4"	Dot Cylinders
2" Module Soft Ambient		1.5" Cylinder 2" Cylinder

**LARGE MRO ADD-ONS**(for recessed MRO only)

Hemi L	Dot	Dot Cylinders
1x2" Module 1x3" Module Soft Ambient	1.5" Dot 2" Dot	1.5" Cylinder 2" Cylinder





Cluster Pi MRO 9° recessed



Cluster Pi provides an atmosphere of **visual comfort** in learning environments.



# Cluster Collection

## Complementing Products

Cluster is a line of fixtures characterized by their clustering of identical 1.2" light cells to form compact linear, cuboid, and circular luminaires, all of which can be recessed, pendant, or surface mounted. Optically, each cell holds a single LED emitter with a choice of soft- and sharp-edge lenses, multiple beam spreads, and subtle aperture treatments. Quiet and discreet, Clusters provides excellent visual cut-off and a superior Unified Glare Rating (UGR) of 10.

Stylistically, the Cluster line gives off a vibe that originates in the mid-20th century, a period which saw the emergence of design as a geometric, sleek, and modular system with motifs and symbols derived from atomic science and outer space exploration.

Linear, Cuboids,  
Downlights, and  
Combinations

Recessed,  
Surface, Pendant

Parabolic, Soft-Edge,  
Sharp-Edge, Wall Wash,  
and Combinations





CLUSTER PI  
BROCHURE



CLUSTER PI  
ONLINE



ALWAYS LIGHT  
RIGHT

[lumenwerx.com](https://lumenwerx.com)  
R.12.2025