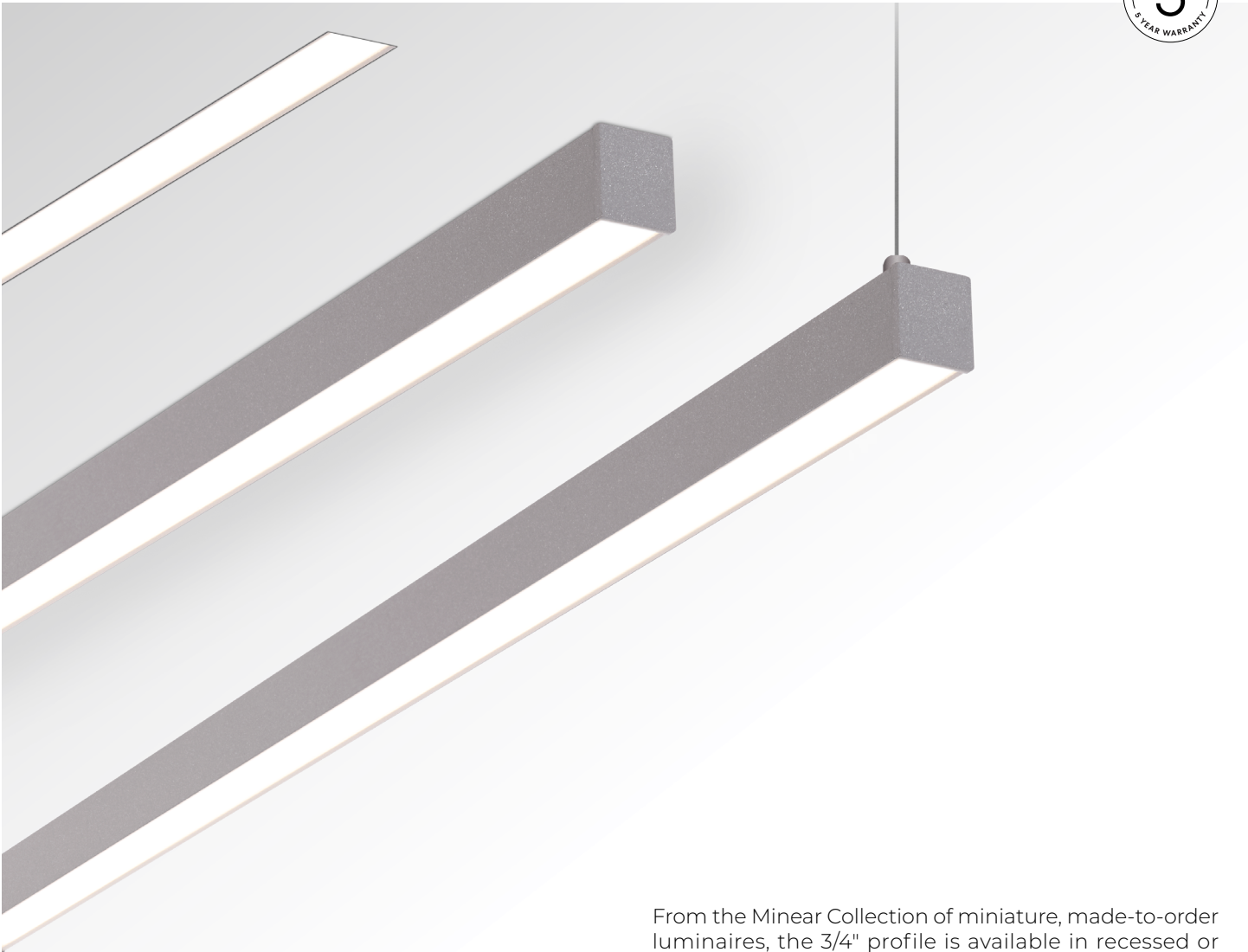


# MINEAR 3/4"

DIRECT  
PENDANT, RECESSED, SURFACE



From the Minear Collection of miniature, made-to-order luminaires, the 3/4" profile is available in recessed or surface mounting as well as in pendant configurations. Its slightly larger aperture allows for broader illumination while retaining a refined, unobtrusive presence.

**SENSORS**  
For latest information on sensors, click [here](#).

Minear Brochure



**IC RATED**



# MINEAR 3/4"



DIRECT  
PENDANT, RECESSED, SURFACE

Project: \_\_\_\_\_  
 \_\_\_\_\_  
 Type: \_\_\_\_\_  
 \_\_\_\_\_

## Order Guide

LUMINAIRE ID	DISTRIBUTION	OPTIC	LIGHT SOURCE	CRI	LUMEN PACKAGE
	<b>D</b>	<b>BLO</b>	<b>SW</b>		
<b>MIN07P</b> - Minear 3/4" Pendant <b>MIN07R</b> - Minear 3/4" Recessed <b>MIN07S</b> - Minear 3/4" Surface	<b>D</b> - Direct	<b>BLO</b> - Balanced Lambertian Optic	<b>SW</b> - Static white	<b>80CRI</b> - 80+ CRI <b>90CRI</b> - 90+ CRI	<b>150LMF</b> <sup>1</sup> - Hypo output 150 lm/ft <b>200LMF</b> <sup>1</sup> - Low output 200 lm/ft <b>350LMF</b> - Medium output 350 lm/ft <b>500LMF</b> <sup>2</sup> - High output 500 lm/ft <b>600LMF</b> <sup>2</sup> - Ultra high output 600 lm/ft  <sup>1</sup> Minimum fixture length is 3'. <sup>2</sup> Not IC-rated for Recessed.

COLOR TEMPERATURE	LUMINAIRE LENGTH	VOLTAGE	DRIVER <sup>5,6</sup>	ELECTRICAL
				<b>IC</b>
<b>27K</b> - 2700K <b>30K</b> - 3000K <b>35K</b> - 3500K <b>40K</b> - 4000K <b>50K</b> - 5000K	<b>#FT#IN</b> <sup>3</sup> - Specify nominal length (#) in 1' and/or 4" increments  <b>Standard nominal lengths:</b> Single units: 1' to 8' Continuous runs: lengths over 8'  <sup>3</sup> Continuous line of light every 16'. A joiner bridge is visible every 16'.	<b>120V</b> - 120V <b>277V</b> - 277V <b>UNV</b> - 120V-277V <b>347V</b> <sup>4</sup> - 347V  <sup>4</sup> Available with RD1 driver only.	<b>REMOTE</b>  <b>RD1</b> - 1% 0-10V <b>RELV</b> <sup>6</sup> - ELV 120V <b>RTRI</b> <sup>6</sup> - TRIAC 120V <b>RDA</b> <sup>7,8</sup> - DALI <b>RLDE1</b> <sup>7,8</sup> - Lutron Hi-lume 1% Eco <b>RELD1</b> <sup>9</sup> - eldoLED 1% ECOdrive 0-10V <b>RELD0</b> <sup>8</sup> - eldoLED 0.1% SOLOdrive 0-10V  <sup>5</sup> Remote driver box is provided. <sup>6</sup> Available with 120V only. <sup>7</sup> Minimum fixture length is 3'. Consult factory for details. <sup>8</sup> On-site commissioning is required.	<b>IC</b> - 1 circuit

## MOUNTING<sup>9</sup>

PENDANT <sup>10</sup>				RECESSED	SURFACE
CANOPY TYPE	CANOPY FINISH	POWER	CABLE LENGTH	<b>DMF</b> <sup>14</sup> - Drywall mud flange	<b>UCC</b> - Universal ceiling clip
<b>2CN</b> <sup>11</sup> - Ø 2" canopy <b>5CN</b> <sup>12</sup> - Ø 5" canopy	<b>FTMW</b> - Matte white <b>FTMBB</b> - Matte black <b>AL</b> - Aluminum <b>CF#</b> - Custom finish, specify RAL#	<b>CPS</b> - Coaxial powered suspension	<b>36IN</b> - 36" <b>72IN</b> - 72" <b>#IN</b> <sup>13</sup> - Specify nominal length in inches		

<sup>9</sup>The mounting option selected must reflect the luminaire ID.  
<sup>10</sup>See page 4 for details.  
<sup>11</sup>Mounted to low voltage (LV) j-boxes provided by Lumenwerx. Ø 2" for all canopies.  
<sup>12</sup>Mounted to standard j-boxes by others. Ø 5" for power canopies, Ø 2" for non-power canopies.  
<sup>13</sup>Maximum length is 72".  
<sup>14</sup>Fixture is installed with surface clips.

FEED LOCATION <sup>15</sup> Specify NA for Pendant	WIRE HARNESS LENGTH <sup>16</sup> Specify NA for Pendant	FINISH <sup>17</sup>
<b>TF</b> - Top feed <b>NA</b> - Not applicable  <sup>15</sup> 6" quick connector feed.	<b>10FT</b> - 10' <b>20FT</b> - 20' <b>30FT</b> - 30' <b>50FT</b> - 50' <b>70FT</b> - 70' <b>90FT</b> - 90' <b>NA</b> - Not applicable  <sup>16</sup> Low-voltage, plenum-rated wire harness for remote driver.	<b>FTMW</b> - Matte white <b>FTMBB</b> - Matte black <b>AL</b> - Aluminum <b>CF#</b> - Custom finish, specify RAL#  <sup>17</sup> See page 6 for more finish options.



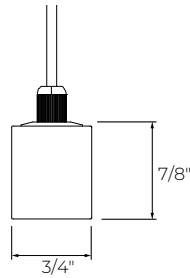
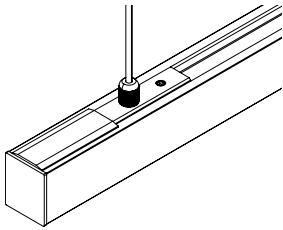
# MINEAR 3/4"

DIRECT  
PENDANT, RECESSED, SURFACE



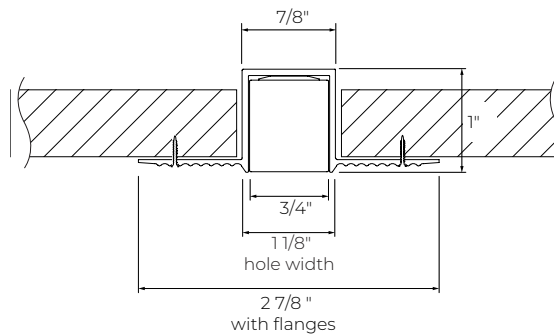
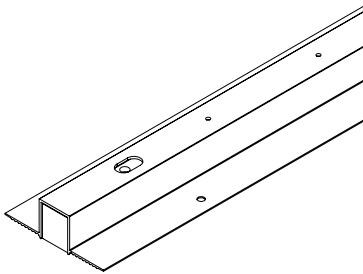
## Dimensions

### Pendant



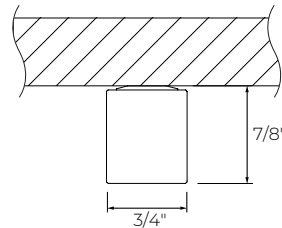
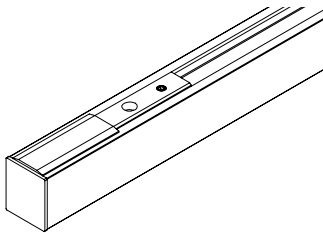
**CPS** - Coaxial powered suspension

### Recessed



**DMF** - Drywall mud flange

### Surface



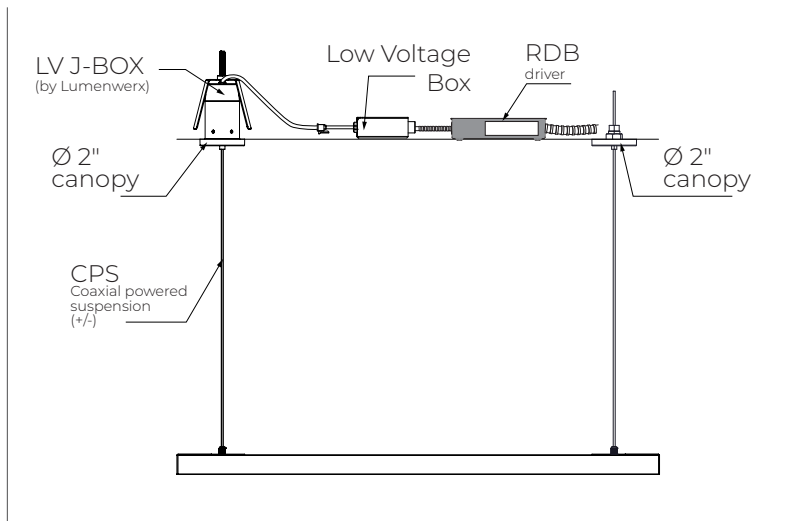
**UCC** - Universal ceiling clip

# MINEAR 3/4"

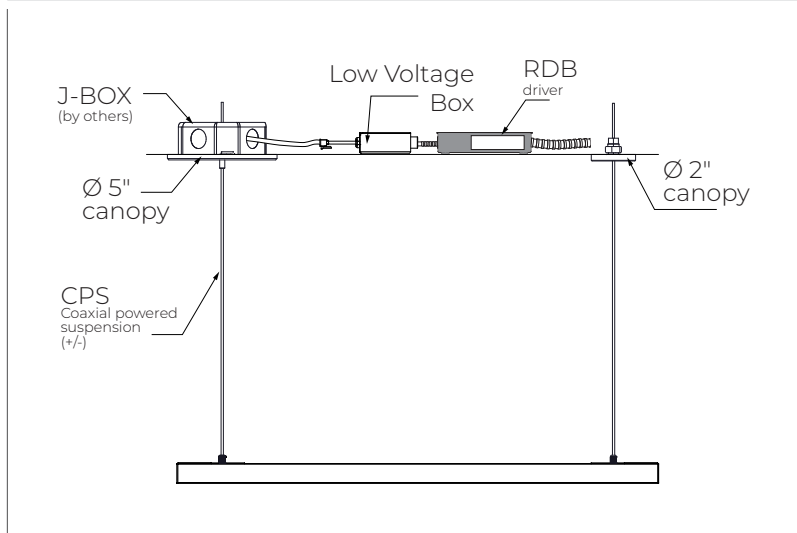
DIRECT  
PENDANT, RECESSED, SURFACE

## Pendant Mounting Details

2CN - Ø 2" canopy



5CN - Ø 5" canopy



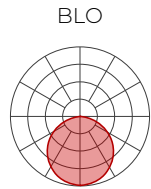
# MINEAR 3/4"

DIRECT  
PENDANT, RECESSED, SURFACE



## Photometrics

Values calculated based on a 4' fixture at 3500K.



LM/FT	W/FT	LM/W
150	1.8	82
200	2.4	83
350	4.1	85
500	6.0	83
600	7.3	83

## MULTIPLIER TABLE

Use this table to get results for different color temperatures.

CCT	WATTS	
	80+ CRI / 90+ CRI	80+ CRI / 90+ CRI
2700K	1.05	0.95
3000K	1.02	0.98
3500K	1.00	1.00
4000K	1.00	1.00
5000K	0.96	1.04

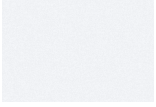
# MINEAR 3/4"



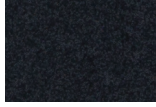
DIRECT  
PENDANT, RECESSED, SURFACE

## Fixture Finishes

### Standard



**FTMW** - Matte White



**FTMB** - Matte Black

### Custom

#### Neutrals



**CRM** - Cream



**GRY** - Gray



**STG** - Steel Gray

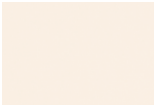


**SAG** - Sage Gray

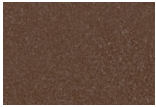


**BLB** - Black Blue

#### Designer



**ALM** - Almond



**RST** - Rust Fine  
Texture



**GRB** - Green Beige



**YLW** - Yellow



**SLM** - Salmon Pink



**VIO** - Pastel Violet



**RED** - Red



**PRR** - Purple Red



**SMB** - Storm Blue



**DPB** - Deep Blue



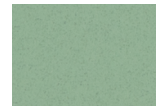
**OCB** - Ocean Blue



**BLG** - Blue Green



**GNS** - Green Smoke

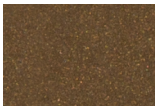


**MNG** - Mint Green

#### Metallics



**CHP** - Champagne



**DBZ** - Dark Bronze



**CNY** - Canyon

### Premium Custom

#### Neutrals



**MOG** - Moss Gray



**QRZ** - Quartzite  
Texture



**LMG** - Lime Green



**GLD** - Gold



**IRN** - Iron Ore



**SBP** - Sandblast  
Copper



**SWD** - Sandalwood

# MINEAR 3/4"

DIRECT

PENDANT, RECESSED, SURFACE



## Technical Specifications

### OPTICS

#### Balanced Lambertian Optic (BLO)

The Balanced Lambertian Optic (BLO), made from high-quality satin-diffuse acrylic, uses a micro-textured surface to produce soft, uniform distribution with a glare-controlled falloff and a wide 110° beam, ensuring consistent illumination and visual comfort.

### LIGHT SOURCE

Custom array of mid-flux LEDs are cartridge-mounted with quick-connect wiring to facilitate service and thermal management. Available in 2700K, 3000K, 3500K, 4000K, and 5000K with a minimum 80+ CRI and an option for 90+ CRI with elevated R9 value. Color consistency maintained to within 3 SDCM. All LEDs have been tested in accordance with IESNA LM-80-08 and the results have shown L80 lumen maintenance greater than 60,000 hours. Absolute product photometry is measured and presented in accordance with IESNA LM-79, unless otherwise indicated.

### LUMINAIRE LENGTH

Minear is available in standard lengths of 1' to 8'. Continuous runs are available for run lengths over 8', with a joiner bridge visible every 16'. Exact run length must be noted in the product code. The minimum length is 1', and can be ordered in 1' and/or 4" increments.

### ELECTRICAL

Factory-set, adjustable output current LED driver with universal (120-277 VAC) input. Dimmable from 100% to 1% with 0-10V dimming control. Rated life (90% survivorship) of 50,000 hours at 50°C max. ambient (and 70°C max. case) temperature. At maximum driver load: Efficiency > 84%, PF > 0.9, THD < 20%. Other specifiable options include Lutron Hi-Lume 1% Eco, eldoLED 1% ECOdrive 0-10V, eldoLED 0.1% SOLOdrive 0-10V, ELV, TRIAC, and DALI protocol drivers. All of our standard 0-10V drivers are NEMA 410 compliant. ELV and TRIAC dimming performance (including minimum dimming percentage) subject to dimmer selection.

### PoE

Depending on the PoE manufacturer selected, Lumenwerx will install the node in factory as either integral to the luminaire or as a remote module. These must be addressed and evaluated on a case-by-case basis.

### MOUNTING

**Pendant:** Pendant fixtures are mounted with coaxial powered suspension cables.

**Recessed:** Recessed fixtures can be mounted in drywall ceilings with a mud flange option. The fixture is secured with a clip.

**Surface:** Surface fixtures can be mounted directly to drywall and hard surface ceilings with a clip. Long runs require a minimum distance of 2" from the vertical wall.

### FINISH

Matte white, matte black or aluminum powder coating. Custom finishes are also available.

### CONSTRUCTION

**Housing:** Extruded aluminum

**Lens:** Acrylic

**Mounting clip:** Polycarbonate

**End caps:** Aluminum

**Coaxial powered suspension cable:** Stainless steel aircraft cable 1mm thick

### WEIGHT

**Pendant:** 0.25 lb/ft - 115 g/ft

**Recessed:** 0.30 lb/ft - 137.5 g/ft

**Surface:** 0.25 lb/ft - 115 g/ft

### CERTIFICATION

**ETL:** Rated for indoor dry/damp locations. Conforms to UL Standard 1598 and certified to CAN/CSA Standard C22.2 No. 250.0.

**IC rated:** Suitable for direct contact with insulation. For Recessed mounting only (150 lm/ft, 200 lm/ft, and 350 lm/ft only).

### WARRANTY

Lumenwerx provides a five-year limited warranty on electrical and mechanical performance of the luminaires, including the LED boards, drivers, and auxiliary electronics. Lumenwerx will repair or replace defective luminaires or components at our discretion, provided they have been installed and operated in accordance with our specifications. Other limitations apply, please refer to the full warranty on our website.