


MINEAR RING

DIRECT/INDIRECT, DIRECT
PENDANT



From the Minear Collection of miniature, made-to-order luminaires, the Minear Ring features a 1/2" aperture and diameters ranging from 18" to 72", offering a circular expression that complements its linear counterparts. Minear Ring is available as a pendant-mounted fixture suitable for both standalone installations and grouped compositions.

SENSORS
For latest information on sensors, click [here](#).



Minear Brochure



MINEAR RING

DIRECT/INDIRECT, DIRECT
PENDANT



Project: _____

Type: _____

Order Guide

LUMINAIRE ID	DISTRIBUTION	SIZE	DIRECT OPTIC	INDIRECT OPTIC Specify NA for Direct fixture
MINRIP			BLO	
MINRIP - Minear Ring Pendant	DI - Direct/Indirect D - Direct	18IN - Ø 18" 24IN - Ø 24" 36IN - Ø 36" 48IN - Ø 48" 60IN - Ø 60" 72IN - Ø 72"	BLO - Balanced Lambertian Optic	BLO - Balanced Lambertian Optic NA - Not applicable

LIGHT SOURCE ¹	CRI	LUMEN PACKAGE			COLOR TEMPERATURE																																									
SW	90CRI																																													
SW - Static white	90CRI - 90+ CRI	DIRECT	DIRECT/INDIRECT		27K - 2700K 30K - 3000K 35K - 3500K 40K - 4000K																																									
		<table border="1"> <thead> <tr> <th></th> <th>Low</th> <th>High</th> </tr> </thead> <tbody> <tr> <td>Ø 18"</td> <td>450LM</td> <td>750LM</td> </tr> <tr> <td>Ø 24"</td> <td>600LM</td> <td>1000LM</td> </tr> <tr> <td>Ø 36"</td> <td>900LM</td> <td>1500LM</td> </tr> <tr> <td>Ø 48"</td> <td>1200LM</td> <td>2000LM</td> </tr> <tr> <td>Ø 60"</td> <td>1500LM</td> <td>2500LM ¹</td> </tr> <tr> <td>Ø 72"</td> <td>1800LM</td> <td>3000LM ¹</td> </tr> </tbody> </table>		Low	High	Ø 18"	450LM	750LM	Ø 24"	600LM	1000LM	Ø 36"	900LM	1500LM	Ø 48"	1200LM	2000LM	Ø 60"	1500LM	2500LM ¹	Ø 72"	1800LM	3000LM ¹	<table border="1"> <thead> <tr> <th></th> <th>Low</th> <th>High</th> </tr> </thead> <tbody> <tr> <td>Ø 18"</td> <td>900LM</td> <td>1500LM</td> </tr> <tr> <td>Ø 24"</td> <td>1200LM</td> <td>2000LM</td> </tr> <tr> <td>Ø 36"</td> <td>1800LM</td> <td>3000LM ¹</td> </tr> <tr> <td>Ø 48"</td> <td>2400LM</td> <td>4000LM ¹</td> </tr> <tr> <td>Ø 60"</td> <td>3000LM ¹</td> <td>5000LM ¹</td> </tr> <tr> <td>Ø 72"</td> <td>3600LM ¹</td> <td>6000LM ¹</td> </tr> </tbody> </table>		Low	High	Ø 18"	900LM	1500LM	Ø 24"	1200LM	2000LM	Ø 36"	1800LM	3000LM ¹	Ø 48"	2400LM	4000LM ¹	Ø 60"	3000LM ¹	5000LM ¹	Ø 72"	3600LM ¹	6000LM ¹	
	Low	High																																												
Ø 18"	450LM	750LM																																												
Ø 24"	600LM	1000LM																																												
Ø 36"	900LM	1500LM																																												
Ø 48"	1200LM	2000LM																																												
Ø 60"	1500LM	2500LM ¹																																												
Ø 72"	1800LM	3000LM ¹																																												
	Low	High																																												
Ø 18"	900LM	1500LM																																												
Ø 24"	1200LM	2000LM																																												
Ø 36"	1800LM	3000LM ¹																																												
Ø 48"	2400LM	4000LM ¹																																												
Ø 60"	3000LM ¹	5000LM ¹																																												
Ø 72"	3600LM ¹	6000LM ¹																																												

¹Available with remote driver only.

VOLTAGE	DRIVER	ELECTRICAL ⁴
		1C
120V - 120V 277V - 277V UNV - 120V-277V 347V ² - 347V ² Available with RD1 driver only.	CANOPY DRIVER DI - 1% 0-10V DA ³ - DALI LDE1 ³ - Lutron Hi-Lume 1% Eco ELD1 - eldoLED 1% ECOdrive 0-10V ELDO - eldoLED 0.1% SOLOdrive 0-10V ³ On-site commissioning is required.	REMOTE DRIVER RD1 - 1% 0-10V RDA ³ - DALI RLDE1 ³ - Lutron Hi-Lume 1% Eco RELD1 - eldoLED 1% ECOdrive 0-10V RELDO - eldoLED 0.1% SOLOdrive 0-10V ⁴ For other circuit configurations, consult factory.

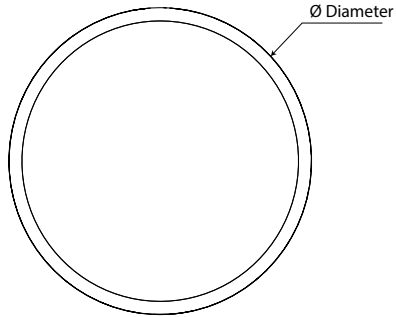
MOUNTING					FINISH ¹⁰																						
DRIVER BOX ⁵	CANOPY FINISH	POWER	MOUNTING POINTS	MOUNTING CABLE LENGTH ⁹																							
RCD - Round canopy driver box RDB - Remote driver box ⁵ For more information see page 3.	FTMW - Matte white FTMBB - Matte black AL - Aluminum CF# - Custom finish, specify RAL#	POC - Integrated suspension power-over-aircraft cable	SC ⁶ - Single canopy MC ^{6,7,8} - Multiple canopies ⁶ See page 4 for more details. ⁷ For fixtures up to 48", a total of three canopies are provided. Four canopies are supplied for 60" and larger fixtures. ⁸ With the RCD option, the type of each canopy may differ based on the selected lumen package and driver options. Consult factory for details.	<table border="1"> <tbody> <tr> <td>18IN - 18"</td> <td>60IN - 60"</td> </tr> <tr> <td>24IN - 24"</td> <td>72IN - 72"</td> </tr> <tr> <td>36IN - 36"</td> <td>#IN - Specify nominal length in inches</td> </tr> <tr> <td>48IN - 48"</td> <td></td> </tr> </tbody> </table> ⁹ For single canopy option, the minimum required mounting heights are (distance from ceiling to top of fixture in inches): <table border="1"> <thead> <tr> <th>Fixture size</th> <th>Minimum height</th> </tr> </thead> <tbody> <tr> <td>Ø 18"</td> <td>min height 11"</td> </tr> <tr> <td>Ø 24"</td> <td>min height 15"</td> </tr> <tr> <td>Ø 36"</td> <td>min height 22"</td> </tr> <tr> <td>Ø 48"</td> <td>min height 29"</td> </tr> <tr> <td>Ø 60"</td> <td>min height 36"</td> </tr> <tr> <td>Ø 72"</td> <td>min height 43"</td> </tr> </tbody> </table>	18IN - 18"	60IN - 60"	24IN - 24"	72IN - 72"	36IN - 36"	#IN - Specify nominal length in inches	48IN - 48"		Fixture size	Minimum height	Ø 18"	min height 11"	Ø 24"	min height 15"	Ø 36"	min height 22"	Ø 48"	min height 29"	Ø 60"	min height 36"	Ø 72"	min height 43"	FTMW - Matte white FTMB - Matte black AL - Aluminum CF# - Custom finish, specify RAL# ¹⁰ See page 5 for more finish options.
18IN - 18"	60IN - 60"																										
24IN - 24"	72IN - 72"																										
36IN - 36"	#IN - Specify nominal length in inches																										
48IN - 48"																											
Fixture size	Minimum height																										
Ø 18"	min height 11"																										
Ø 24"	min height 15"																										
Ø 36"	min height 22"																										
Ø 48"	min height 29"																										
Ø 60"	min height 36"																										
Ø 72"	min height 43"																										

MINEAR RING

DIRECT/INDIRECT, DIRECT
PENDANT

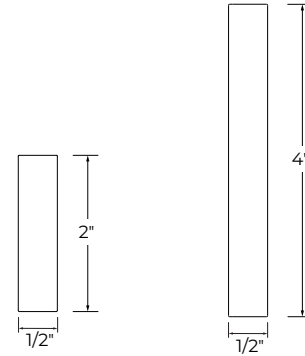


Dimensions



Ø Diameter	
Ø 18"	Ø 18 3/8"
Ø 24"	Ø 23 3/16"
Ø 36"	Ø 36 5/8"
Ø 48"	Ø 46 7/16"
Ø 60"	Ø 60 1/4"
Ø 72"	Ø 72 21/64"

Section View

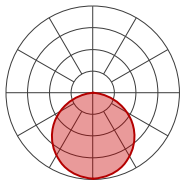


DIRECT

DIRECT/INDIRECT

Photometrics

Direct



Delivered lumens at 40K at 90+ CRI

LED OUTPUT	LOW			HIGH		
	SIZE	WATTS	NOMINAL DELIVERED LUMENS	LPW	WATTS	NOMINAL DELIVERED LUMENS
Ø 18"	15.0	450	30	27.8	750	27
Ø 24"	20.0	600	30	37.0	1000	27
Ø 36"	30.0	900	30	55.6	1500	27
Ø 48"	40.0	1200	30	74.1	2000	27
Ø 60"	50.0	1500	30	92.6	2500	27
Ø 72"	60.0	1800	30	111.1	3000	27

Multiplier @ 90+ CRI

CCT (K)	Watts	LPW
2700	1.08	0.92
3000	1.05	0.96
3500	1.02	0.98
4000	1.00	1.00

MINEAR RING

DIRECT/INDIRECT, DIRECT
PENDANT

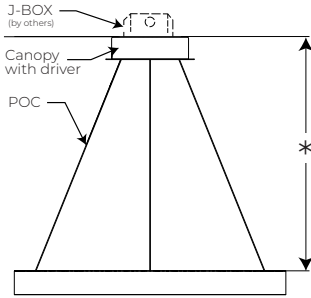


Mounting Options

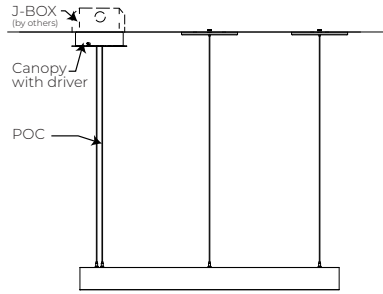
RCD - Round Canopy Driver Box

SC - SINGLE CANOPY

MC - MULTIPLE CANOPY



POC - Power-over-aircraft cable

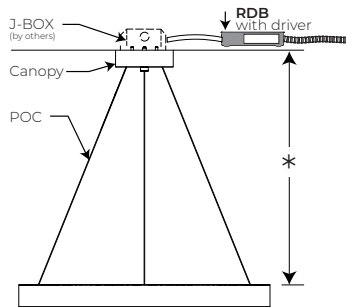


POC - Power-over-aircraft cable

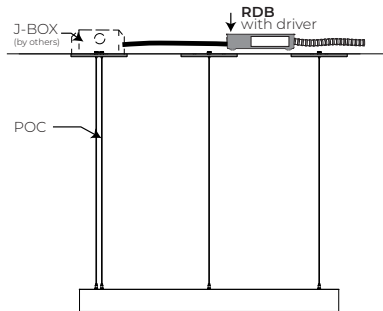
RDB - Remote Driver Box

SC - SINGLE CANOPY

MC - MULTIPLE CANOPY



POC - Power-over-aircraft cable



POC - Power-over-aircraft cable

For single canopy option, the minimum required mounting heights:

Fixture size * Minimum height

Fixture size	* Minimum height
Ø 18"	min height 11"
Ø 24"	min height 15"
Ø 36"	min height 22"
Ø 48"	min height 29"
Ø 60"	min height 36"
Ø 72"	min height 43"

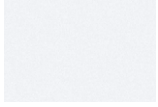
MINEAR RING

DIRECT/INDIRECT, DIRECT
PENDANT



Fixture Finishes

Standard



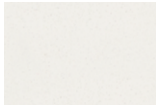
FTMW - Matte White



FTMB - Matte Black

Custom

Neutrals



CRM - Cream



GRY - Gray



STG - Steel Gray

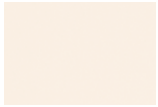


SAG - Sage Gray

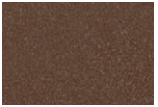


BLB - Black Blue

Designer



ALM - Almond



RST - Rust Fine
Texture



GRB - Green Beige



YLW - Yellow



SLM - Salmon Pink



VIO - Pastel Violet



RED - Red



PRR - Purple Red



SMB - Storm Blue



DPB - Deep Blue



OCB - Ocean Blue



BLG - Blue Green



GNS - Green Smoke

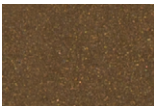


MNG - Mint Green

Metallics



CHP - Champagne



DBZ - Dark Bronze



CNY - Canyon

Premium Custom

Neutrals



MOG - Moss Gray



QRZ - Quartzite
Texture



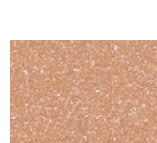
LMG - Lime Green



GLD - Gold



IRN - Iron Ore



SBP - Sandblast
Copper



SWD - Sandalwood

MINEAR RING

DIRECT/INDIRECT, DIRECT
PENDANT



Technical Specifications

OPTIC

Balanced Lambertian Optic (BLO)

The Balanced Lambertian Optic (BLO), made from high-quality satin-diffuse acrylic, uses a micro-textured surface to produce soft, uniform distribution with a glare-controlled falloff and a wide 110° beam, ensuring consistent illumination and visual comfort.

LIGHT SOURCE

Custom array of mid-flux LEDs are mounted directly to the housing for optimal thermal performance. Available in 2700K, 3000K, 3500K and 4000K with 90+ CRI and elevated R9 value. Color consistency maintained to within 3 SDCM. LEDs operate at reduced drive current to optimize efficacy and lumen maintenance.

All LEDs have been tested in accordance with IESNA LM-80-08 and the results have shown L80 lumen maintenance greater than 60,000 hours. Absolute product photometry is measured and presented in accordance with IESNA LM-79, unless otherwise indicated.

ELECTRICAL

Factory-set, adjustable output current LED driver with universal (120-277VAC) input. Dimmable from 100% to 1% with 0-10V dimming control. Rated life (90% survivorship) of 50,000 hours at 50°C max. ambient (and 70°C max. case) temperature. At maximum driver load: Efficiency > 84%, PF > 0.9, THD < 20%. Other specifiable options include Lutron Hi-Lume 1% Eco, eldoLED 1% ECOdrive 0-10V, eldoLED 0.1% SOLOdrive 0-10V, and DALI protocol drivers. All of our standard 0-10V drivers are NEMA 410 compliant.

PoE

Depending on the PoE manufacturer selected, Lumenwerx will install the node in factory as either integral to the luminaire or as a remote module. Factory programming of the PoE node may or may not enable the following functionalities: lumen package, DUO (tunable white), QUADRO (RGBW), emergency battery backup, and sensor integration. These must be addressed and evaluated on a case-by-case basis.

FINISH

Interior: 95% reflective, matte white powder coated white paint

Exterior: Matte white, matte black or aluminum powder coating.

Custom finishes are also available.

CONSTRUCTION

Housing: Rolled and seamlessly welded aluminum extrusion

Canopy: Spun sheet metal

Lens: Acrylic

WEIGHT

Ø 18": 3.7 lbs - 1.7 kg

Ø 24": 5 lbs - 2.2 kg

Ø 36": 7.5 lbs - 3.4 kg

Ø 48": 10 lbs - 4.5 kg

Ø 60": 12.5 lbs - 5.6 kg

Ø 72": 15 lbs - 6.8 kg

CERTIFICATION

ETL: Rated for Indoor Dry/Damp locations. Conforms to UL Standard 1598 and certified to CAN/CSA Standard C22.2 No. 250.0.

WARRANTY

Lumenwerx provides a five-year limited warranty of electrical and mechanical performance of the luminaires, including the LED boards, drivers, and auxiliary electronics. Lumenwerx will repair or replace defective luminaires or components at our discretion, provided they have been installed and operated in accordance with our specifications. Other limitations apply, please refer to the full warranty on our website.