

# OBE

PENDANT



The Obe collection is composed of three fixtures - Obe Opal, Obe Hex, and Obe Prism - each sharing the same curved shade profile while offering a distinct low-glare optical effect. Available in multiple shade sizes and premium brushed metallic finishes, Obe luminaires can be specified for intimate settings or arranged into larger decorative compositions.

### Light Source

Static White

SOLA

DUO



### Optics

HLO

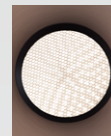
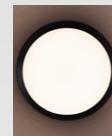
Obe Opal

PMO

Obe Prism

HEX

Obe Hex



Brochure



Pivot Obe  
Module

Project: \_\_\_\_\_

Type: \_\_\_\_\_

### Order Guide - Static White

For SOLA Dim-to-Warm and DUO Tunable White order guide, see page 3

LUMINAIRE ID	SIZE	SHADE FINISH <sup>1</sup>	MODULE FINISH	BAFFLE FINISH	OPTIC
<b>OBE</b>				<b>FTMB</b>	
<b>OBE</b> - Obe	<b>8IN</b> - Ø 8" shade with 2" module <b>12IN</b> - Ø 12" shade with 3" module <b>18IN</b> - Ø 18" shade with 4" module	<b>FTMB</b> - Matte black <b>FTMW</b> - Matte white <b>CF#</b> - Custom finish, specify RAL#  <u>Premium colors</u> <b>FBS</b> - Brushed brass <b>FCP</b> - Brushed copper <b>FBCH</b> - Brushed champagne  <sup>1</sup> See page 6 for more finish options.	<b>FTMB</b> - Matte black <b>GLDA</b> - Anodized gold	<b>FTMB</b> - Matte black	<b>HLO</b> - High-Efficiency Lambertian Optic <b>PMO</b> - Precision Micro-Prism Optic <b>HEX</b> - Hex louver

LIGHT SOURCE	CRI	LUMEN PACKAGE	COLOR TEMP.	VOLTAGE	DIMMING							
<b>SW</b>												
<b>SW</b> - Static white	<b>80CRI</b> - 80+ CRI <b>90CRI</b> - 90+ CRI	<table border="1"> <tr> <td>Ø 8"</td> <td><b>300LM</b> - 300 lm</td> </tr> <tr> <td>Ø 12"</td> <td><b>600LM</b> - 600 lm</td> </tr> <tr> <td>Ø 18"</td> <td><b>900LM</b> - 900 lm</td> </tr> </table>	Ø 8"	<b>300LM</b> - 300 lm	Ø 12"	<b>600LM</b> - 600 lm	Ø 18"	<b>900LM</b> - 900 lm	<b>18K</b> - 1800K <b>22K</b> - 2200K <b>27K</b> - 2700K <b>30K</b> - 3000K <b>35K</b> - 3500K <b>40K</b> - 4000K <b>50K</b> - 5000K	<b>120V</b> - 120V <b>277V</b> - 277V <b>UNV</b> - 120V-277V <b>347V</b> <sup>2</sup> - 347V  <sup>2</sup> Available with RD1 driver only. Please consult factory.	<b>CANOPY DRIVER</b> <b>DI</b> - 1% 0-10V <b>ELV</b> <sup>3</sup> - ELV 120V <b>TRI</b> <sup>3</sup> - TRIAC 120V <b>DA</b> <sup>4,5</sup> - DALI <b>ELDO</b> <sup>4</sup> - eldoLED 0.1% 0-10V <b>ELD1</b> <sup>4</sup> - eldoLED 1% 0-10V  <sup>3</sup> Available with 120V only. <sup>4</sup> Only available with DR canopy option. <sup>5</sup> On-site commissioning is required. <sup>6</sup> A remote driver box is provided. <sup>7</sup> To specify, add +EB to the selected dimming option, e.g. RD1+EB. <sup>8</sup> Not available with Ø 8".	<b>REMOTE DRIVER</b> <sup>6</sup> <b>RD1</b> - 1% 0-10V <b>RELV</b> <sup>3</sup> - ELV 120V <b>RTRI</b> <sup>3</sup> - TRIAC 120V <b>RLDEI</b> <sup>5</sup> - Lutron Hi-lume 1% Eco <b>RDA</b> <sup>5</sup> - DALI <b>RELDO</b> - eldoLED 0.1% 0-10V <b>RELD1</b> - eldoLED 1% 0-10V <b>+EB</b> <sup>7,8</sup> - Emergency battery
Ø 8"	<b>300LM</b> - 300 lm											
Ø 12"	<b>600LM</b> - 600 lm											
Ø 18"	<b>900LM</b> - 900 lm											

CANOPY TYPE <sup>9</sup>	CANOPY FINISH <sup>12</sup>	CORD GRIPPER <sup>13</sup>	SUSPENSION
<b>FLR</b> - Flat round canopy, 4" octagonal junction box <b>CDR</b> - Conduit feed, round canopy <b>DMNC</b> <sup>10</sup> - Direct mount, new construction <b>DMRM</b> <sup>10,11</sup> - Direct mount, remodel <b>DR</b> - Deep round canopy  <sup>9</sup> See page 5 for details. <sup>10</sup> Only available with remote driver. <sup>11</sup> Single wiring entry only. No daisy chain connections allowed.	<b>FTMB</b> - Matte black <b>FTMW</b> - Matte white <b>CF#</b> - Custom finish, specify RAL#  <sup>12</sup> See page 6 for more finish options.	<b>FTMB</b> - Matte black <b>FTMW</b> - Matte white <b>CF#</b> - Custom finish, specify RAL#  <sup>13</sup> See page 6 for more finish options.	<b>POWER CORD</b> <sup>14</sup> <b>BPC###IN</b> - Black PVC <b>WPC###IN</b> - White PVC  <sup>14</sup> Min 18" - max 72", specify length (##) in inches.



Project: \_\_\_\_\_

Type: \_\_\_\_\_

### Order Guide - SOLA Dim-to-Warm and DUO Tunable White

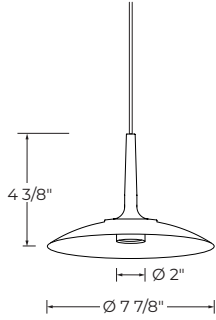
For static white order guide, see page 2

LUMINAIRE ID	SIZE	SHADE FINISH <sup>1</sup>	MODULE FINISH	BAFFLE FINISH	OPTIC	LIGHT SOURCE
<b>OBE</b>				<b>FTMB</b>		
<b>OBE</b> - Obe	<b>8IN</b> - Ø 8" shade with 2" module <b>12IN</b> - Ø 12" shade with 3" module <b>18IN</b> - Ø 18" shade with 4" module	<b>FTMB</b> - Matte black <b>FTMW</b> - Matte white <b>CF#</b> - Custom finish, specify RAL#  <u>Premium colors</u> <b>FBS</b> - Brushed brass <b>FCP</b> - Brushed copper <b>FBCH</b> - Brushed champagne  <sup>1</sup> See page 6 for more finish options.	<b>FTMB</b> - Matte black <b>GLDA</b> - Anodized gold	<b>FTMB</b> - Matte black	<b>HLO</b> - High-Efficiency Lambertian Optic <b>PMO</b> - Precision Micro-Prism Optic <b>HEX</b> - Hex louver	<b>SOLA</b> - Dim-to-warm single channel control <b>DUO</b> - Tunable white 2-channel control

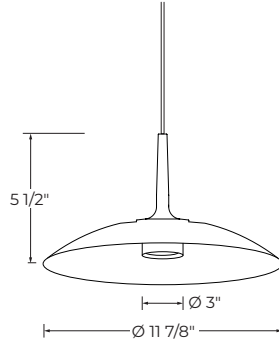
CRI	LUMEN PACKAGE	COLOR TEMP.	VOLTAGE	DIMMING						
<b>90CRI</b>										
<b>90CRI</b> - 90+ CRI	<table border="1"> <tr> <td>Ø 8"</td> <td><b>300LM</b> - 300 lm</td> </tr> <tr> <td>Ø 12"</td> <td><b>600LM</b> - 600 lm</td> </tr> <tr> <td>Ø 18"</td> <td><b>900LM</b> - 900 lm</td> </tr> </table>	Ø 8"	<b>300LM</b> - 300 lm	Ø 12"	<b>600LM</b> - 600 lm	Ø 18"	<b>900LM</b> - 900 lm	<u>SOLA</u> <b>30K18K</b> - 3000K to 1800K <b>27K18K</b> - 2700K to 1800K  <u>DUO</u> <b>65K27K</b> - 6500K to 2700K <b>50K27K</b> - 5000K to 2700K	<b>120V</b> - 120V <b>277V</b> - 277V <b>UNV</b> - 120V-277V	<b>REMOTE DRIVER<sup>2</sup></b>  <u>SOLA<sup>3</sup></u> <b>RSD1</b> - Single 0-10V input <b>RSDA<sup>4</sup></b> - DALI  <u>DUO</u> <b>RDMX<sup>4</sup></b> - DMX <b>RDDA<sup>4</sup></b> - DALI DT6 <b>RDDA8<sup>4</sup></b> - DALI DT8 <b>RDD1</b> - Dual 0-10V input for CCT/intensity <b>RLD2<sup>4</sup></b> - Lutron DALI-2 digital  <sup>2</sup> A remote driver box is provided. <sup>3</sup> Consult factory for ELV/TRIAC. <sup>4</sup> On-site commissioning is required.
Ø 8"	<b>300LM</b> - 300 lm									
Ø 12"	<b>600LM</b> - 600 lm									
Ø 18"	<b>900LM</b> - 900 lm									

CANOPY TYPE <sup>5</sup>	CANOPY FINISH <sup>7</sup>	CORD GRIPPER <sup>8</sup>	SUSPENSION
<b>FLR</b> - Flat round canopy, 4" octagonal junction box <b>CDR</b> - Conduit feed, round canopy <b>DMNC</b> - Direct mount, new construction <b>DMRM<sup>6</sup></b> - Direct mount, remodel <b>DR</b> - Deep round canopy  <sup>5</sup> See page 5 for details. <sup>6</sup> Single wiring entry only. No daisy chain connections allowed.	<b>FTMB</b> - Matte black <b>FTMW</b> - Matte white <b>CF#</b> - Custom finish, specify RAL#  <sup>7</sup> See page 6 for more finish options.	<b>FTMB</b> - Matte black <b>FTMW</b> - Matte white <b>CF#</b> - Custom finish, specify RAL#  <sup>8</sup> See page 6 for more finish options.	<b>POWER CORD<sup>9</sup></b> <b>BPC##IN</b> - Black PVC <b>WPC##IN</b> - White PVC  <sup>9</sup> Min 18" - max 72"; specify length (##) in inches.

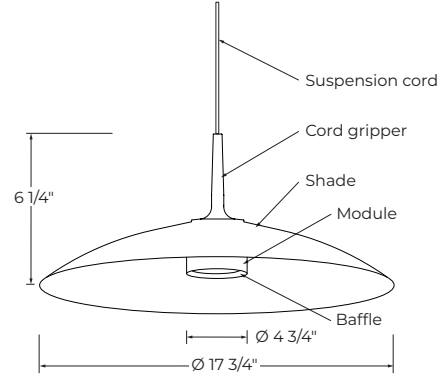
### Dimensions



**8IN - Ø 8"**

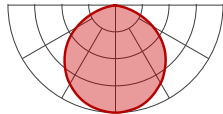


**12IN - Ø 12"**

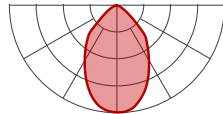


**18IN - Ø 18"**

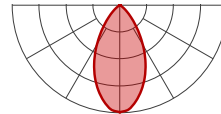
### Photometrics



**HLO**



**PMO**



**HEX**

#### STATIC WHITE

Values calculated based on 3500K.

SIZE	LM	HLO		PMO		HEX	
		W	LM/W	W	LM/W	W	LM/W
Ø 8"	300	5.5	55	5.5	55	6.2	48
Ø 12"	600	11	55	7.3	82	11.4	53
Ø 18"	900	16.5	55	11.9	76	17.2	52

#### SOLA/DUO

Values calculated at high end CCT.

SIZE	LM	HLO		PMO		HEX	
		W	LM/W	W	LM/W	W	LM/W
Ø 8"	300	5.6	54	4	75	5.8	52
Ø 12"	600	11.5	52	7.5	80	12	50
Ø 18"	900	16.6	54	11	82	17.6	51

#### Multiplier - CCT

CCT	
1800K	1.19
2200K	1.07
2700K	1.02
3000K	1.00
3500K	1.00
4000K	0.97
5000K	0.97

## Mounting

CANOPY DRIVER			
Order code	FLR Flat round canopy, 4" octagonal junction box	CDR Conduit feed, round canopy	DR Deep round canopy
Canopy type			
Canopy size	Ø 4 1/2" Height 3/8"	Ø 5 1/2" Height 1 15/16"	Ø 5 5/8" Height 1 3/8"

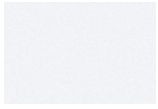
REMOTE DRIVER					
Order code	FLR Flat round canopy, 4" octagonal junction box	CDR Conduit feed, round canopy	DMNC Direct mount, new construction	DMRM Direct mount, remodel	DR Deep round canopy
Canopy type					
Canopy size	Ø 4 1/2" Height 3/8"	Ø 5 1/2" Height 1 15/16"	Ø 3 1/8" Height 2"	Ø 3 1/8" Height 2"	Ø 5 5/8" Height 1 3/8"
Single wiring entry only. No daisy chain connections allowed.					

## SUSPENSION

POWER CORD	
PVC	
Power Cord Lengths (*)	
Min 18" Max 72"	

## Shade Finishes

### Standard



**FTMW** - Matte White



**FTMB** - Matte Black



**FBS** - Brushed brass



**FCP** - Brushed copper

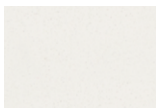


**FBCH** - Brushed champagne

### Premium

### Custom

#### Neutrals



**CRM** - Cream



**GRY** - Gray



**STG** - Steel Gray

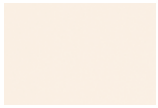


**SAG** - Sage Gray

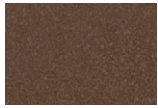


**BLB** - Black Blue

#### Designer



**ALM** - Almond



**RST** - Rust Fine Texture



**GRB** - Green Beige



**YLW** - Yellow



**SLM** - Salmon Pink



**VIO** - Pastel Violet



**RED** - Red



**PRR** - Purple Red



**SMB** - Storm Blue



**DPB** - Deep Blue



**OCB** - Ocean Blue



**BLG** - Blue Green



**GNS** - Green Smoke

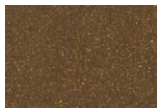


**MNG** - Mint Green

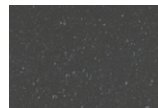
#### Metallics



**CHP** - Champagne



**DBZ** - Dark Bronze



**CNY** - Canyon

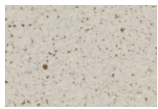
### Premium Custom

#### Neutrals



**MOG** - Moss Gray

#### Designer



**QRZ** - Quartzite Texture



**LMG** - Lime Green

#### Metallics



**GLD** - Gold



**IRN** - Iron Ore



**SBP** - Sandblast Copper



**SWD** - Sandalwood

## Module Finishes



**FTMB** - Matte Black



**GLDA** - Anodized Gold

Some colors may have longer lead time.

## Technical Specifications

### OPTIC

#### High-Efficiency Lambertian Optic (HLO)

Obe Opal features a High-Efficiency Lambertian Optic. The opal lens provides wide, uniform distribution with excellent visual comfort.

#### Precision Micro-Prism Optic (PMO)

Obe Prism features a Precision Micro-Prism Optic engineered to provide controlled distribution and increased center intensity.

#### Hex louver (HEX)

Obe Hex features a hex louver. The hexagonal lens structure ensures precise light cut-off and visual comfort.

### LIGHT SOURCE

#### Static white

Custom array of mid-flux LEDs available in 1800K, 2200K, 2700K, 3000K, 3500K, 4000K, and 5000K, and 90+ CRI with elevated R9 value. Color consistency is maintained to within 2 SDCM. All LEDs have been tested in accordance with IESNA LM-80-08 and the results have shown L80 lumen maintenance greater than 60,000 hours. Absolute product photometry is measured and presented in accordance with IESNA LM-79, unless otherwise indicated.

#### Chromawerx SOLA

Chromawerx SOLA is single-channel control that dims output while warming the color temperature in a pre-determined relationship. The color temperature range can be specified from the following options: 2200K, 2700K, 3000K, 3500K, 4000K, 5000K, and 6500K. A simple analog control adjusts a specially populated LED array to emulate the effect of dimming a filament source.

#### Chromawerx DUO

Chromawerx DUO offers a two-channel control system which uses analog or digital protocols for synchronous control of both cool to warm LED arrays - maintaining a CRI above 90. The color temperature range can be specified from the following options: 2200K, 2700K, 3000K, 3500K, 4000K, 5000K, and 6500K. The range of color DUO offers is useful for entraining circadian rhythms, stimulating alertness, and compensating for jet lag among other applications. The Chromawerx drivers are programmed to limit maximum light output and power usage across all color temperatures. When paired with DALI drivers (DDA/DDA8), color tuning follows a linear dimming curve.

### ELECTRICAL

Unless otherwise specified, dimming down to 1%. At maximum driver load: efficiency > 84%, PF > 0.9, THD < 20%. ELV and TRIAC dimming performance (including minimum dimming percentage) subject to dimmer selection.

**Canopy driver:** 1% 0-10V, ELV, TRIAC, DALI, eldoLED 1% ECOdrive 0-10V, eldoLED 0.1% SOLOdrive 0-10V

**Remote driver:** 1% 0-10V, ELV, TRIAC, Lutron Hi-Lume 1% EcoSystem, DALI, eldoLED 1% ECOdrive 0-10V, eldoLED 0.1% SOLOdrive 0-10V, DMX, Lutron DALI-2 digital

**Emergency Battery Option:** Remotely-installed, long-life, high-temperature, maintenance-free, Bodine Lithium-Ion battery pack with self-test functionality, test switch and charge indicator. IOTA and Fulham options available upon request. Minimum of 90 minutes operation, and recharge time of 24 hours. For fixtures less than 10W, the battery provides 6W of emergency light output. For fixtures 10W and over, the battery provides 10W.

### PoE

Depending on the PoE manufacturer selected, Lumenwerx will install the node in factory as either integral to the luminaire, or as a remote module. Factory programming of the PoE node may or may not enable the following functionalities: lumen package, DUO (tunable white), QUADRO (RGBW), emergency battery backup, and sensor integration. These must be addressed and evaluated on a case-by-case basis.

### FINISH

Standard powder-coat paint available in matte white and black. Custom colors are also available.

### CONSTRUCTION

**Housing:** Die-cast and extruded aluminum

**Power cord:** Black and white PVC, 18" to 72" standard length

**Canopy:** Flat, conduit feed, direct, and deep

### WEIGHT

**8"** 0.82 lbs - 0.37 kg

**12"** 1.35 lbs - 0.61 kg

**18"** 3.08 lbs - 1.39 kg

### CERTIFICATION

**ETL:** Rated for indoor dry/damp locations. Conforms to UL Standard 1598 and certified to CAN/CSA Standard C22.2 No. 250.0.

### WARRANTY

Lumenwerx provides a five-year limited warranty on electrical and mechanical performance of the luminaires, including the LED boards, drivers, and auxiliary electronics. Lumenwerx will repair or replace defective luminaires or components at our discretion, provided they have been installed and operated in accordance with our specifications. Other limitations apply, please refer to the full warranty on our website.